

# **The Political Economy of Institutional Change and Social Blocs in Switzerland: a Neorealist Approach**

**Master in the Political Economy of Capitalism, University of Geneva**

Celâl Güney

Supervisor: Professor Bruno Amable

# Table of contents

<b>Abstract</b>	<b>5</b>
<b>1 Introduction</b>	<b>6</b>
1.1 The Swiss model under pressure . . . . .	6
1.2 Research question, theoretical framework and plan . . . . .	9
1.2.1 Theoretical framework and concept definitions . . . . .	10
1.2.2 Switzerland: an interesting case study for the neorealist approach . . . . .	11
<b>2 Social blocs, structural factors and political divides in Switzerland</b>	<b>17</b>
2.1 The traditional Swiss bourgeois and left blocs: historical perspectives . . . . .	17
2.2 Swiss social blocs and socio-economic factors: 1980-2016 . . . . .	25
2.2.1 Data and empirical strategy . . . . .	32
2.3 In search of the liberal conservative and left blocs . . . . .	41
2.3.1 The latent class model and estimation method . . . . .	42
2.3.2 Estimation of Swiss socio-political groups in 1999: the 12 clusters model	42
<b>3 Conclusion</b>	<b>62</b>
<b>4 Appendix</b>	<b>64</b>
<b>Auto-analyse des dimensions éthiques du mémoire de Master</b>	<b>74</b>
<b>References</b>	<b>77</b>

# List of Figures

1.1	Share of people who report having confidence in the national government . . . .	12
1.2	Share of Swiss respondent trusting the government: 1981-2016. 95% confidence intervals. . . . .	14
2.1	Education Levels in Switzerland: 1981-2016 . . . . .	33
2.2	Descriptive statistics: variable nivmena and revenu . . . . .	34
2.3	Party support in Switzerland: 1981-2016. Average difference in predicted probabilities between the highest and lowest income groups and between university and vocational training graduates. . . . .	36
2.4	Political leaning in Switzerland: 1981-2016. Average difference in predicted probabilities between the highest and lowest income groups (less than 3000CHF per month vs more than 9000CHF), the second highest ([7'000chf-9'000chf]) and lowest income groups, and between university and vocational training graduates. . . . .	37
2.5	Opinion on several social issues in Switzerland: 1992-2016. Average difference in predicted probabilities between the highest and lowest income groups (less than 3000CHF per month vs more than 9000CHF) and between university and vocational training graduates. . . . .	38
2.6	Party Strength: 1918-2019 . . . . .	44
2.7	Positions of the Swiss main political parties on planned economy, the welfare state and on European integration. . . . .	59
4.1	Party identification . . . . .	64
4.2	Proportions of Swiss citizen leaning for the left, the right or neither left or right: 1988-2016 . . . . .	70
4.3	Proportions of Swiss citizen supporting state intervention, equal rights & chances for foreigners, and redistribution: 1993-2016 . . . . .	70
4.4	Average marginal contrasts results from multilevel probit model: party support . . . . .	71
4.5	Average marginal contrasts results from multilevel probit regressions: political leaning . . . . .	72
4.6	Average marginal contrasts results from multilevel probit regressions: issue position . . . . .	72
4.7	Variables chosen as indicators in the Latent class model for 1999: descriptive statistics . . . . .	73

# List of Tables

2.1	Social blocs in Switzerland during the 70s and 80s. Classification based on Rennwald (2014), Tawfiq (2019). . . . .	24
2.2	The four possible social blocs based on a bi-dimensional political divide and income and education levels. This classification is based on Durrer de la Sota, Gethin, and Martinez-Toledano (2021) results (see their appendix). The term bourgeois bloc and this table were inspired by Amable and Darcillon (2022a). . . . .	29
2.3	The four possible social blocs based on a bi-dimensional political divide and income and education levels. Results from regression analysis of VoxIt data . . . . .	40
2.4	Cluster description . . . . .	52
2.5	Influence of political leaning on cluster membership. Z-values under the coefficients. . . . .	55
2.6	Influence of the degree of sympathy for each party on cluster membership. Z-values under the coefficients. . . . .	57
4.1	Binary logit regressions: party support (log-odds). Full table available here . . . . .	64
4.2	Binary logit regressions: party support (log-odds). Full table available here . . . . .	65
4.3	Binary logit regressions: political leaning (log-odds). Full table available here . . . . .	66
4.4	Binary logit regressions: issue position (log-odds). Full table available here . . . . .	67
4.5	Model selection: 12 clusters model . . . . .	68
4.6	Binary logistic regression: support for EU integration. Log(odds). Data source: SELECTS 1999 . . . . .	68

# Abstract

What were the political conditions and social bases for a neoliberal transformation of the Swiss socio-economic model in the last decades? The present master thesis seeks to explore the social bases behind the transformation and stability of the Swiss socio-economic model since the 80s. As a first step, long-run analyses of the socio-economic determinants of party support, political leaning and policy preferences are conducted. The results show evidence that, regarding party support, Switzerland's political landscape appears to be structured by a brahmin left versus merchant right divide, as theorized by Piketty (2019). However, the results for political leaning show that, while right leaning evolved into a merchant pattern, left leaning became gradually endorsed by upper-middle income and high education groups. Finally, the results from a latent class analysis aimed at identifying the recomposition of the Swiss social blocs in the late 90s are presented. The selected model divides the late 90s' Swiss population into twelve socio-political groups, and the different strategies that could have aggregated these clusters into social blocs are assessed. Using the concepts and methods of neorealism (Amable and Palombarini 2005, 2008), the objective of this master thesis is to provide the first steps into a broader analysis of the political economy of institutional change in Switzerland.

# 1 Introduction

## 1.1 The Swiss model under pressure

Switzerland represents an interesting case study for the analysis of institutional change. Despite some widespread stereotypes, such as the supposed slowness and rigidity of the Swiss political system due to the multiple veto points allowed through direct democracy, the country underwent important institutional, economic, as well as political change in the last decades. In a certain way, Switzerland remains in the shadows of the political and economic crisis of the 90s, a period which marked an acceleration of institutional change which is still debated in the early 2020s, with greater hesitation about the direction to be taken by the Swiss socio-economic model.

The Swiss model of capitalism is also difficult to classify in the Varieties of Capitalism's (VoC) framework, and comparative capitalism's theories have had a hard time trying to classify and characterize the Swiss peculiar case. Hall and Soskice (2001) famously ranked Switzerland among the coordinated market economies (CMEs), but other scholars have stressed the fact that Switzerland also exhibits strong liberal traits belonging to the liberal market economy (LME) type of capitalism (Mach et al. 2007).

In *Capitalism against Capitalism*, a book which, before Hall and Soskice and the VoC literature, already described two competing models of capitalism, Michel Albert (2009) underlined the many peculiarities of the Swiss model, that he, at first glance, thought of as “the very incarnation of liberal economic philosophy and laissez-faire capitalism” (Albert 2009, 131). The author recounts how, during a visit to Switzerland, he learned to his surprise that the Swiss insurance and financial systems were highly regulated. His personal confrontation to the Swiss model made him realize that he was “discovering a new form of capitalism in which the price tag, the material aspect of a product, was secondary to the service being offered, in other words, the whole web of non-material, subjective, even emotional factors woven into the product.” (Albert 2009, 132). This new form of capitalism, that he named the *Rhine model* or *Alpine capitalism* (which includes Germany, Switzerland, Austria or even Japan) represented an alternative system to the *neo-American* model. Unlike Hall and Soskice, who stressed that CMEs and LMEs produced similar economic performance and should diverge by following their own specific paths, Albert argued that, despite the economic and social superiority of the Rhine model, the latter ran the risk of gradual conversion to the neo-American model (Albert 2009).

Despite the structural weakness of the Swiss federal state, the weakness of labor unions and the predominance of business interests, Switzerland's economy indeed developed various non-market and non-competitive coordination mechanisms throughout the 20th century, which go even beyond the regulated insurance and financial systems which surprised Albert so much. One can think of, for instance, the cartelization of major Swiss industries which was actively supported by the state through public subsidies in the interwar period<sup>1</sup> or the late creation and expansion of the Swiss welfare state after the Second World War, even though the latter remains small compared to other welfare state regimes (Obinger 1998).

Swiss corporate governance also displayed strong differences from a market-based, shareholder-oriented system which typically prevails in Anglo-Saxon countries. Until the mid-1980s, Swiss corporate governance was an “insider-oriented” type of system characterized by self-regulation by private actors with minimal legal framework, “selective protectionism” (*Vinkulierung*) in favor of Swiss shareholders and blockholders and strong cooperation between business actors, associations and networks (Mach et al. 2007).

According to Katzenstein (1985), small European states like Switzerland were likely to develop such coordinated and corporatist institutions and thus form a particular type of capitalism different from the liberal model of Great-Britain and the US and from the statist model of France and Japan. In fact, small domestic markets, international competitive pressure and the economy's dual structure of small states make the latter likely to develop into a “democratic corporatism” type of capitalism. But among democratic corporatism systems, Katzenstein still stressed that Switzerland could be classified as a “liberal variant” due to weak labor unions and the dominance of employer's associations.

Therefore, Swiss capitalism represents a peculiar case with both liberal and non-liberal institutions: weak labor union density and strong business side; labor market flexibility and weak state intervention are all features that could sort the Swiss case into the LME type of capitalism. But theories of comparative capitalism have generally classified the Swiss model among the non-liberal and coordinated market economies (Hall and Soskice 2001). However, socio-economic models are not static and they change under the pressure of institutional dynamics and social conflict (Amable 2023). Non-liberal European models have especially been altered by structural reforms in the last decades, without converging entirely towards LMEs either. The Swiss CME, like Germany or France, also experienced such dynamics, which put into question the classification and future of the Swiss model.

In fact, since the global neoliberal turn of the late 20th century, the Swiss model is under pressure and experienced important waves of neoliberal reforms (Trampusch and Mach 2011). The so-called “structural reforms” advocated by international organizations such as the OECD, but also promoted internally by various Swiss actors, led to subsequent waves of neoliberal reforms in almost all institutional areas. In the early 90s, the Swiss government launched the so-called economic revitalization program, largely influenced by publications from neoliberal Swiss economists such as David de Pury and representatives from the big internationalized

---

<sup>1</sup>See Boillat (2011) for the case of the Swiss watch industry

corporations. The revitalization program's objectives were to improve the competitiveness of the Swiss economy by increasing competition in the domestic market and by liberalizing and privatizing the public sector. One of the main reforms was the Cartel Law of 1995, which created a competition commission (ComCo), reduced anti-competitive practices and the power of Swiss cartels. Some public sectors such as the telecom sector were liberalized and privatized: *Postes, téléphones, télégraphes* was for example partially privatized after the creation of Swisscom in 1998 (Mach, Häusermann, and Papadopoulos 2003).

Regarding the liberalization of corporate governance, the *Stock Corporation law* of 1991 and the *Federal Act on Stock Exchange and Securities Trading* (SESTA) of 1995, by strengthening minority and foreign shareholder rights, strongly liberalized the so-called "*Forteresse des Alpes*" ("Alps Fortress"), a metaphor used by the international finance community to illustrate the protectionist Swiss financial system (David, Mach, and Schnyder 2015). The trade unions crisis of the 1990s facilitated further the reconsideration of collective labor agreements such as wage indexation schemes.

The neoliberal transformation of the Swiss socio-economic model is thus underway, but remains far from complete. Trade unions and the Swiss left were partially successful in blocking some of the reforms through referendum. As such, the privatization of the energy sector met some resistance since the *law on the electricity market* was rejected through popular vote in 2002. The future of the Swiss energy sector, which remains partly public, is subject to heated debates given the deterioration of international context since the Covid crisis and the war in Ukraine<sup>2</sup>. Other reforms directed towards labor market flexibility (1996), reducing pension rights (1996) and unemployment benefits (1997) also were blocked through referendum. Unions were particularly successful to compromise through the bilateral negotiations with the European Union (EU) and various "flanking measures" were adopted in exchange of unions' support for Bilateral treaties (Oesch 2011).

During the last decades, the Swiss model thus underwent important process of institutional change which moved it closer to the neoliberal model, without converging totally towards the latter either. This unfinished transformation led Trampusch and Mach (2011) to qualify the Swiss economy as a hybrid model of capitalism. The concept of hybrid model, or of "hybridisation", is often used to characterize the non-liberal economies which imported neoliberal institutions without complete convergence (Amable 2016). For Amable (2023), hybridisation can be explained by increasingly differentiated and contradictory demands from social groups, and the different attempt and strategies aimed at conserving their socio-political support.

As a result, the Swiss advocates of neoliberalism are still unsatisfied with the progress of the reforms and are keen on underlying the remaining rigidities of the Swiss hybrid model. In that respect, Gerhard Schwarz, director of the neoliberal think tank *Avenir Suisse* between 2011 and 2015, and one of the authors, with David de Pury, of the so-called "white books",

---

<sup>2</sup>See for example the "seven good reasons" to privatize the electricity sector by the neoliberal Swiss think tank *Avenir Suisse* (Grünenfelder 2022).



which were manifesto promoting a neoliberal transformation of the Swiss model in the 1990s (Leutwiler et al. 1991; Hauser et al. 1996), declared in 2015:

“It is absurd to believe that we live in a liberal society. The Swiss politico-economic system is mixed, as evidenced by the share of the state, compulsory levy, of 40%. The production of norms and regulations grows exponentially. I am always surprised by the amount of people who still believe that we are in a neoliberal world. This is a *fake news*. The size of the state grows and the autonomy of the individual declines.” (Garessus 2019, author’s translation)

On the other hand, the OECD still underlines the “barriers to free trade and competition in the domestic market” and the overdue of the pension reforms (OECD 2022, 12). For several years now, neoliberals have persisted with the idea that Switzerland is treading water when it comes to structural reforms, and that this immobility could well mark the end of the country’s advantageous and privileged position. Nicolas Jutzet, liberal activist and project manager in the *Institut Liberté (Liberal Institute)* and co-creator of the media *Liber-thé*, deplors this supposed “wait-and-see” attitude, which he believes is the consequence of the erosion of the Swiss “militia spirit”, the professionalization of Swiss politics and the increasing recurrence of social movements that threaten private property, freedom and trade as well as of individual responsibility (Jutzet 2023).

## 1.2 Research question, theoretical framework and plan

The extent to which the Swiss hybrid model will complete its mutation towards a neoliberal model represents thus a fundamental economic, political and institutional issue for the years to come. A thorough and non-normative analysis of the path taken by the Swiss model since the crisis of the 1990s is thus duly needed and is behind the motivation of the present paper. What kind of social base made this neoliberal transformation of the Swiss socio-economic model possible? Is this social base stable enough to complete this transformation? The motivation behind this research question is to underline the socio-political conditions which drive the stability or transformation of any given socio-economic model. Neoliberal reforms are not the result of an inevitable evolution that imposes itself in a predestined manner on institutional change, and thus put restraints on political choices which will inevitably be constraint to implement the one best way prescribed by neoclassic theory. Rather, they are the result of a political strategy, which needs to rest on a sufficiently viable and sustainable social base.

A way to answer this research question is thus to explore the relevant Swiss social blocs and assess the extent to which these blocs evolved under the influence of different factors: socio-economic characteristics, institutional dynamics or even political mediation. The scope of the present analysis will be limited to the identification of the main Swiss social blocs and the extent to which their composition and evolution are influenced by socio-economic characteristics. The first part will conduct a long-term analysis of the support for the main

Swiss political parties, of political leaning and of a set of policy preferences, with a special focus on income and educational levels. Then, the second part will present the results of a latent class analysis (LCA) of the Swiss socio-political groups in the late 90s.

The aim of this essay is to conduct an analysis which would constitute a first step into a broader and comprehensive investigation of the political economy of institutional change in Switzerland. Far from the normative approach of mainstream economics, in which structural reforms simply constitute the sole and evident path towards its ideal model of perfect competition purged from rigidities, the methods and theory employed here are extensively based on the political economy of institutional change developed by Amable and Palombarini: the neorealist approach (Amable and Palombarini 2005, 2008).

### 1.2.1 Theoretical framework and concept definitions

The point of departure of the neorealist approach is the fundamental diversity of social expectations coming from the heterogeneity of the social structure. This diversity leads to a wide variety of differentiated social interests which are in perpetual contradiction and discord. Societies are thus characterized by a fundamental social conflict, which cannot be forever resolved but only temporarily regulated through the interaction between three spheres of social regulations: ideology, institutions and political mediation (Amable and Palombarini 2023).

Common socio-economic characteristics define socio-economic groups, which only partially translate into socio-political groups. The latter are groups which gather individuals sharing common social expectation regarding public policies and the desired socio-economic model. Regarding the relationships between socio-economic and socio-political groups, neorealism avoids the pitfalls of economic determinism, which predominates in mainstream Public Choice theories and in certain Marxist currents. On the one hand, socio-demographic characteristics and hence socio-economic groups are partly captured by socio-political groups: agents with, for instance, low income level have more incentive to be in favour of pro-redistribution policies. However, they may not be in favor of redistribution if they are culturally persuaded by the dominant ideology to not follow their economic interests, or to prioritize other demands in their hierarchy of expectations. Ideology thus mediates the translation of economic interests into explicit social demand. On the other hand, political mediation represents political strategies aimed at gathering socio-political groups into social blocs, which are thus never strictly homogeneous (Amable 2021).

Political strategies thus aggregate socio-political groups into social blocs. A social bloc whose main demands are met and favored by public decision-making is the *dominant social bloc* (DSB). Social blocs whose demands are not favored by public policy are excluded from the DSB. In the neorealist framework, a political crisis corresponds to the collapse or destabilization of the DSB. Conversely, a stable existence of a DSB corresponds to a situation of *political equilibrium*. If the break-up of the DSB persists in time and no political strategy is successful in aggregating a new DSB to support a given socio-economic model, the crisis becomes *systemic* (Amable

2003; Amable and Palombarini 2005, 2008, 2023). The concept of political equilibrium does not imply that the existence of a DSB leads to an unchanging stable situation. Moreover, periods of systemic crises can persist in time and last several decades, as in France (Amable 2017). The contrasts between Italy and France on the one side, and Switzerland on the other in terms of socio-economic and political institutions and political stability make the latter particularly interesting for the neorealist approach.

## 1.2.2 Switzerland: an interesting case study for the neorealist approach

For the analysis of social blocs and institutional change, Switzerland represents an interesting case study. The country is very different from France and Italy in terms of economic and political institutions. In Lijphart's famous patterns of democracy, Switzerland stands out as the best example of consensus democracy, which is characterized by a proportional and diffuse distribution of political power, as opposed to the majoritarian system which tends to concentrate political power in the hands of the majority<sup>3</sup>. Lijphart explicitly argued that consensus democracies outperform majoritarian democracies in terms of governance, political stability and economic performance (Lijphart 2012). Further studies have nonetheless shown that the extreme Swiss case of consensus democracy is slightly becoming an average consensus democracy, due to growing political polarization (associated with the rise of the Swiss People's Party), deregulation in industrial relations and diminishing cooperation between political actors (Vatter 2008). In Lijphart's framework, the success and stability of the Swiss model compared to France and Italy, which are relatively closer to the majoritarian model, would thus be explained by its political institutions favoring consensus, power-sharing, and compromises.

Moreover, relative to Italy and France, which underwent deep periods of political and systemic crises in the last decades, Switzerland's political stability stands rather remarkably. This stability should, at first sight, not constitute a surprise: Switzerland ranks consistently top among the best performing economies in a wide variety of socio-economic indicators: GDP per capita, Human Living Index (HDI), or even the Economic Complexity Index (ECI)<sup>4</sup>. Switzerland's success and stability are often associated with the particularities of the country's political institutions.

If one considers confidence in government as a good indicator of political stability, and if one looks at the data provided by the OECD on that matter, Switzerland indeed stands out as one of the most stable countries in the OECD.

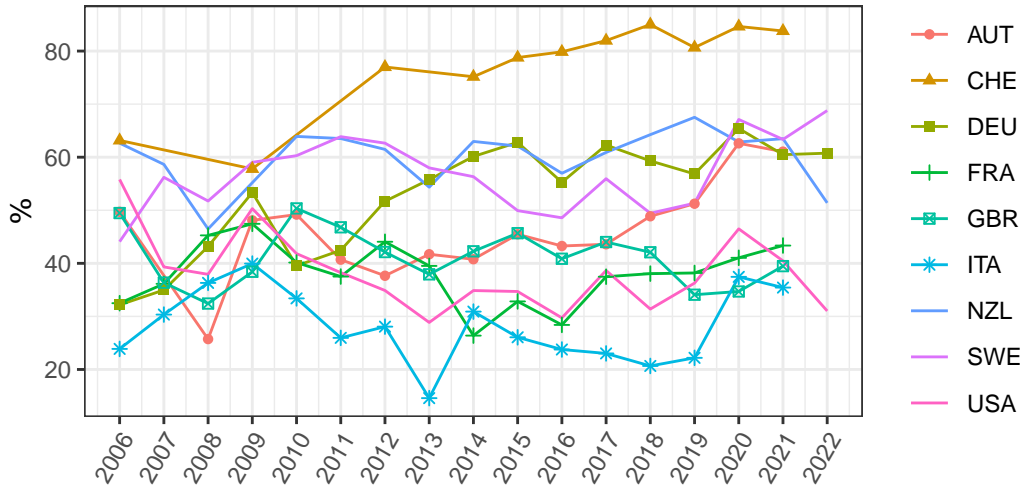
---

<sup>3</sup>Lijphart described Switzerland as the "clearest consensual prototype" (Lijphart 2012, 245). Among all the criteria chosen in the author's typology, only the Swiss system of judicial review did not correspond to the consensus system.

<sup>4</sup>In 2018, Switzerland ranks third in terms of GDP per capita corrected for purchasing power parity among OECD countries (OECD 2019, 14). Switzerland had also the highest HDI in 2021 (Nations 2022, 272) and the second highest ECI in 2021 ("Country Rankings | OEC. OEC - the Observatory of Economic Complexity" n.d.).

## Political Stability across OECD countries

### Trust in National Government: 2006–2022



Data source: OECD

Figure 1.1: Share of people who report having confidence in the national government

Figure 1.1 shows political stability as measured by the share of respondents who declared having trust in national government in a sample of OECD countries from 2006 to 2022. Switzerland shows the highest level of trust among the countries shown in the figure. Swiss trust in government shows an upward trend since 2009 and the share of Swiss respondents declaring trust in government is consistently equal or above 80% since 2016. This stands in sharp contrast with Italy, France or the US, which show very low level of trust. The persistence of political mistrust in government in Italy and France are reflections of the persistent political crisis in which these countries are plunged. The origins of the Italian crisis goes back to 1992 after the break-up of the country's DSB. The latter was constituted by large industrial firms, small firms and their employees, classes linked to rent and transfers and assisted classes whereas large firms' employees were excluded from the DSB. The existence of this DSB was made possible by public debt growth and high interest rates which satisfied the main policy demands of large industrial firms and small businesses (active industrial policy through public debt and not taxation) as well as assisted classes and classes dependent on rent. However, as globalization and European integration put constraints on public debt growth in Italy, and as high interest rates reduced external competitiveness, this DSB collapsed due to the polarization of interests between large and small firms on the one side, and assisted classes, bureaucrats, classes linked to rent and transfers on the other side. (Palombarini 2001).

In France, the crisis intensified with the instability of the traditional left and right blocs, which used to govern alternately and compete for political power since the post-war period.

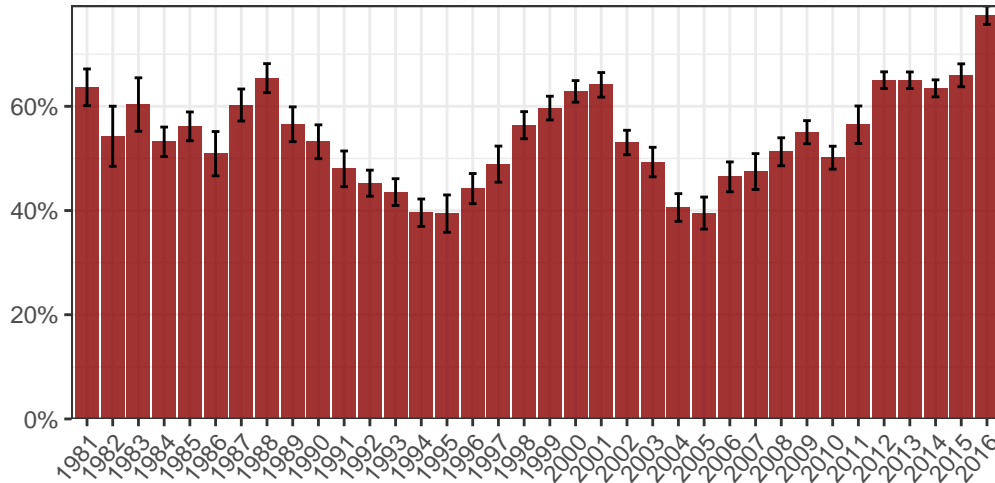
The left bloc was constituted by the working class and the majority of public sector employees whereas the right bloc gathered self-employed, skilled, semi-skilled and white collars workers from the private sector, and farmers. The destabilization of the left and right blocs was the result of multiple factors such the relative decline of the working class, the economic crisis of the 1970s and European integration. The latter played a decisive role in the division of the left bloc between its neoliberal components, in favor of European integration as a tool to promote structural reforms in France, and its socialist branch still in favor of social and labor protection and state intervention (Amable, Guillaud, and Palombarini 2012; Amable and Palombarini 2014b).

Since the break-up of the DSB in France and Italy, both countries experienced successive political strategies carrying a neoliberal agenda. These strategies were first adopted by the right as way out of the political crisis and break-up of the DSB, but they failed due to the economic crisis and the difficulties to build a dominant social alliance which would start from a neoliberal core (executives, self-employed, small entrepreneurs etc) and be extended to other social groups. In France, Sarkozy's strategy was to attract the support of private sector's employees alongside the neoliberal core by implementing a reform of the labour market based on flexicurity. In Italy, Berlusconi's strategy was to conciliate the neoliberal core with precarious classes by promising that neoliberal and supply side reforms would foster employment and growth. These two strategies were however greatly disrupted by the Great Recession, which marked the end of a neoliberal strategy carried by the right and based on a compromise between the neoliberal core and relatively more popular groups. The political strategy carried thereafter in France by Hollande and then Macron, which aimed to explicitly disregard the social expectations of the popular groups of the left bloc and extend the coalition to the center, by adopting a clear-cut neoliberal and pro-EU agenda, was successful in aggregating a new social bloc, the *bloc bourgeois*, uniting the wealthiest and most educated groups of both the left and right blocs, which is nonetheless unstable and fragile because of its restricted size. In Italy, it was the Monti government that sought to create this social alliance which exclude the bulk of popular classes (Amable, Guillaud, and Palombarini 2012; Amable and Palombarini 2014a, 2018).

Going back to Switzerland, other data sources show a more contrasted picture of the country's political stability. The *VOX* studies, which conducted post-ballot surveys after each referendum voting session, were harmonized in a cumulative dataset offering long-run data from 1981 to 2016 (Hardmeier et al. 2022). A similar figure as Figure 1.1 can thus be made with a precise focus on Switzerland.

Figure 1.2 shows that Switzerland underwent contrasted periods of political stability and crises in the last decades. A first period ranging from 1981 to 1987 was rather stable despite some variation in trust. Figure 1.2 also depicts well the crisis of the 90s, which constitutes the most turbulent period in Switzerland's contemporary history. The crisis of the 1990s can be seen with the fall in trust from 65% in 1987 to a historical low level of 39% of Swiss respondents who declared to not have confidence in the federal government in 1995, three years after the rejection of the referendum for the adhesion to the European Economic Area (EEC). Swiss

## Confidence in Government Switzerland, 1981–2016



Data source: VoxIt

Figure 1.2: Share of Swiss respondent trusting the government: 1981-2016. 95% confidence intervals.

journalists, political observers, activist and scholars wrote extensively on that period which constitutes a rare case of deep political and economic crisis.

Brunner and Sgier (1997) show that Swiss citizens lost a great deal of confidence in the government, the national parliament and their members during the 90s. This loss of confidence was followed by a loss of attachment to the nation and to the Swiss sense of identity, and a growing attachment to local authorities and communal institutions. Widmer and De Carlo (2010) draw similar conclusions, but also showed that this period marked a turning-point in the evolution of trusting behaviors: due to cohort dynamics, trust in institutions declined while interpersonal trust rose in the three waves of *World Values Survey* analyzed by the authors (1989, 1996, 2007).

José Ribeaud, famous journalist who was one of the first Swiss television presenters, published the dramatically untitled book *When Switzerland will disappear (Quand la Suisse Disparaîtra)* in 1998. Political observers and journalists like José Ribeaud or Pietro Boschetti generally associate the crisis of the 90s with the multiple political scandals that happened during the 1990s. The first scandal was the resignation of the Radical Elisabeth Kopp from the Federal Council, in which she was the very first woman member, after she secretly tried to protect her husband from judiciary investigations. The “secret files scandal” happened the same year: the mass system of surveillance of the federal authorities was revealed to the Swiss public. The “secret files scandal” revealed that one twentieth of Swiss citizen and one third of foreign

residents were recorded in the public authorities' files. Last but not least, the dormant fund affair also broke out in 1995 and led to the Eizenstat report (1997) and the Bergier commission (1996), which strongly called into question the moral attitude and neutrality of Switzerland during World War II (Ribeaud 1998; Boschetti 2007).

But the political crisis of the 90s was also the result of a severe economic crisis. The stock market crash of October 1987 and the Gulf crisis of 1990-91 ended the longest post-war expansion of the Swiss economy which lasted from 1976 to 1981. The Gulf crisis provoked an inflationary shock which led the Swiss National Bank (SNB) to raise the policy rate. The Swiss economy entered into recession in 1991 and economic stagnation persisted throughout the 1990s. This crisis, along with the crisis of the 1970s, marked the return of unemployment in Switzerland, which had disappeared during the post-war period, mainly because the country used to "export" a discriminated foreign labor force, a strategy which became impossible after crises of the 70s and 90s (OECD 1992).

Does the political and economic crisis of the 1990s constitute the sole period of instability in Switzerland? Figure 1.2 suggests that the early 2000s also represent a period of confidence crisis, as shown by the decline in trust from 2001 to 2005. The global 2001 recession which affected Switzerland surely played a role, but also various political and business events such as the bankruptcy of Swissair (2001). The results of the 2003 federal election also profoundly disturbed the Swiss political scene: the Swiss People's Party (UDC) confirmed its dominance over Swiss politics and gained another seat in the Federal Council at the expense of the Christian Democratic People's Party of Switzerland (PDC). Nonetheless, the upward trend in trust since 2005, which seems to be only slightly affected by the 2007 crisis and the following eurozone crisis, suggests that there is no notable confidence crisis since the 90s and early 2000s.

In view of the results shown in Figure 1.2, can the confidence crises of the 90s and early 2000s be interpreted as *political crises* in the sense given by the neorealist approach? A loss in confidence is not always synonym of political crisis if there is no break-up of the dominant social bloc. To answer this question, we thus need to, as a first step, identify what are the main Swiss social blocs and, secondly, assess their evolution in the last decades.

Until now, neorealism has been first and foremost applied to Italy and France. The present contribution seeks to expand the scope to the Swiss case by focusing on the links between political cleavages, the formation and evolution of social blocs, and socio-economic factors such as income and education.

The research and analysis proposed here are new for the following reasons. First, the present research is, to the author's knowledge, the first to apply neorealist methodology and conceptual framework to Switzerland. Second, a long-term analysis of party support, political leaning and cleavages using post-voting survey data such as VoxIt has never been done in the literature, one possible reason being that researchers tend to focus more on post-election survey data. Last, this research is the first to conduct an endogenous identification of Swiss socio-political groups through a latent class analysis using post-election survey data.

The next section traces a short history of the Swiss social blocs. Then, the results from a series of regressions to analyze their evolution since the 1980s and test several hypotheses concerning the social bases of the transformation of political cleavages and party support are presented. Finally, the results from a latent class analysis using post-election survey data for 1999 are presented.



## 2 Social blocs, structural factors and political divides in Switzerland

### 2.1 The traditional Swiss bourgeois and left blocs: historical perspectives

A striking feature of the history of Switzerland's social blocs is the persistence and resilience of a liberal, and then of a liberal conservative bloc since the creation of modern Switzerland in 1848, a bloc that the existing literature on the topic generally calls the *bourgeois bloc*. Tracing the history of Switzerland's social blocs is therefore essentially a matter of tracing that of the bourgeois bloc. However, we shall see that tracing this history calls into question the extent to which, from a neorealist perspective, this bourgeois bloc can truly be described as bourgeois.

The history of the Swiss bourgeois bloc goes back to the creation of modern Switzerland in the first half of the 19th century. It is during these crucial decades that Switzerland underwent important institutional change that laid the foundation of its federalist system, which still persists today. The Old Swiss Confederacy (1351-1798), was a loose and strongly decentralized confederation between small states which wanted to protect their independence vis-à-vis the Habsburg empire. The only centralized institution of the Confederation was the federal diet, which were assemblies of deputies from the cantons. After the Napoleonic invasion of 1798, the Swiss state underwent a first and important process of centralization, with the fall of the Old Swiss Confederacy and the establishment of the Helvetic Republic, a strongly unitary and centralized state inspired by the French system and imposed by Napoleon. The unpopularity of Helvetic Republic's institutions led to the Mediation Act (1803-1815) and the Restoration (1815-1830), which marked a return to traditional structures. The Regeneration period (1830-1847) saw the growing political power of liberal forces constituted by large industrialists, craftsmen, self-employed farmers and professionals who took power in a majority of cantons. That period was characterized by a growing polarization between liberal and progressive groups in proto-industrialized and protestant cantons and those attached to the traditional models of the Catholic conservative cantons ([Sciarini 2023, 21–25](#)).

This religious cleavage between Radical Protestant modernizers and Catholic federalists, which was historically one of the most structuring conflicts in Switzerland, led to the Sonderbund civil war (1847) and the foundation of modern Switzerland in 1848. The federal institutions elaborated during and in the decades following the first Swiss constitution of 1848 can be interpreted as a social compromise between the losers of the Sonderbund civil war, the Catholic

conservative coalition opposed to the centralization and modernization of the Swiss Confederation, and the victorious and dominant Radicals who were on average Protestants and bourgeois from urban areas (Sciarini 2023, 27–28). However, these two blocs were highly heterogeneous and subject to internal contradictions. It is particularly important to stress the heterogeneity of the Radical bloc, which contrasts with its almost hegemonic domination over Swiss politics in the second half of the 19th century. For four decades (1848-1891), all seven seats of the federal council were held by Radicals despite growing contradictions within the bloc and an increasing opposition coming from the Catholic conservatives, who only gained their first government seat in 1891.

From the outset of their movement, the Radicals were gathered by an unitary illusion: the pretention to transcend cleavages running through Swiss society and unite all its elements thanks to an encompassing goal: the modernization and centralization of the Swiss state. Far from homogeneous, the Radical bloc was a kaleidoscopic mass-movement constituted by the working class through the Grütli Union<sup>1</sup> and by an elite gathering entrepreneurs, bankers, journalists, lawyers and teachers, who were nonetheless divided over the role of the Swiss state.

The political and economic thought of the Radical movement can be difficult to grasp, as its members could substantially differ from one canton to another. Overall, this movement showed a clear intellectual affiliation to the liberal economic and political thought of the 18th and 19th centuries. James Fazy, one of Geneva’s leading 19th-century Radical politicians, was strongly influenced by the Physiocrats and Adam Smith. In 1821, the Genevan Radical published *L’homme aux portions*, an essay denouncing the French economic system as too rigid and containing too many barriers to free trade. This book was praised by Jean-Baptiste Say, who considered Fazy to be an intellectual who fully belonged to the liberal school of thought of his time (Mettral Dubois 2015, 55–56). The Radical movement of the canton of Vaud, founded and led by Henri Druey (1799-1855), was more influenced by the liberal philosophy of Hegel. The main legacy of Hegel’s thought on the radical movement was the need to create a centralized and unitary state, considered in Hegelian philosophy as the means by which liberty and the dialectical movement that drives history are realized (Meuwly 1992).

Parts of the Radicals, constituted by the Democrats, were partisans of a more centralized and interventionist state while another important branch, the liberal or “manchesterian” Radicals, were more federalist and in favor of laissez-faire. This divide between Democrats and Liberals was made explicit as early as 1852 over the issue of the nationalization of the Swiss railway industry. Supporters of a state-run railroad network, represented by for instance in Bern by Jakob Stämpfli<sup>2</sup> (1820-1879) and Johann Jakob Speiser (1813-1856), were opposed by liberal

---

<sup>1</sup>Founded in Geneva in 1838, the Grütli Union was an important patriotic association that kept a long influence over the Swiss labour movement throughout the 19th century. The agreement between the Grütli and the Radicals stemmed from their convergent interest in a more centralized state. However, the Grütli Union progressively distanced itself from the Radicals, drawing closer to the Swiss Socialist Party as soon as the latter was founded in 1888 (Müller 2010).

<sup>2</sup>Major figure and leader of the Bernese Radicalist movement, Stämpfli co-founded in 1845 the Bernese journal *Berner Zeitung*. The same year, he led the Bernese Radicals to a failed corps francs expedition in Lucerne

Radicals such as Alfred Escher<sup>3</sup> (1819-1882) in Zurich, who were industrialists and bankers close to the private railway companies, when they weren't the owners themselves ([Meuwly 2010](#)).

Regarding the Catholic conservative bloc, the latter was from the start a cross-class coalition, constituted by, of course, the Catholic elite, but also by peasants, farmers, artisans and the commercial middle class from rural areas. These groups were united by Catholicism, but also by anti-modernism and federalism. This conservative coalition was the first to make extensive use of the constitutional and optional referendum (respectively 1848 and 1874) to disrupt the reforms promulgated by the Radicals. While the Radicals were convinced that the idea of the Swiss nation would transcend divisions and social conflict, the Catholic conservatives believed that religion, rather than the Swiss state, should endorse this role ([Altermatt 1979](#)).

As industrialization, proletarianization and unionization intensified in the late 19th, the hegemony of the Radical mosaic gradually shattered as the contradictions between the policy expectation of the popular and bourgeois bases increased. Parts of the democrats and of the working class joined or even founded socialist organizations. When the Swiss Socialist Party was founded in 1888, it was a former Radical, Albert Steck (1843-1899), who wrote the party's first program, which provided for nationalizations and a transition to a planned and managed economy. Nevertheless, the former Radical Democrats reconverted into socialism such as Steck or Johan Jakob Treichler (1822-1906) were more influenced by anarchist and utopian socialist ideas than by Marxism. Steck explicitly rejected the notion of class struggle and the Marxian theory of value. Marxism made nonetheless its way into the Swiss Socialist Party in the early 1900s, as seen by the second program of 1904 written by Otto Lange (1863-1936), who rewrote the program along more orthodox Marxist lines. This second program marked a relative decline of the anarchists and cooperative ideas and the advent of Marxism in the Swiss Socialist Party, until the latter definitively abandoned Marxism in the post-war period ([Meuwly 2010, 118-19](#)).

The creation of the Swiss Socialist Party prompted the Radicals to set up their own party, which was created in 1894 under the name of the Radical-Democratic Party (PRD). This marked the beginning of the Radical shift towards liberal stances, which became clear-cut after the general strike of 1912, after which "a long-denied class conflict became evident"

---

aimed at overthrowing the canton's Catholic conservative government. He then became an important member of the Bernese parliament and contributed to the canton's first Radical constitution in 1846. After the Sonderbund civil war, he was an active member of the national council and then of the federal council in 1854. He gained an international reputation after his key role in the *Alabama claims* affair of 1869, which marked the beginnings of Geneva's importance as an international center for conflict resolution ([Summermatter 2020](#)).

<sup>3</sup>Alfred Escher, born in 1819 in Zurich, is surely one of the most emblematic figures of the 19th century Swiss-Germany's high bourgeoisie. Strongly involved in the railway industry, he founded the Credit Suisse in 1856. Elected in the national council from 1844 to 1882, his seamless defense of laissez-faire capitalism and of the interests of the Swiss industrial capitalists earned him the name of "federal baron". Despite his ardent defense of private interests, Escher supported the establishment of federal public education throughout his career. In particular, he played an important role in the creation of the Swiss Federal Institute of Technology of Zurich (ETH Zurich) in 1855. See Bürgi ([2020](#)).

(Meuwly 2010, 49). Conversely, industrialization and class conflict represented an opportunity for an extension of the social basis of the Catholic conservative bloc towards the working class. The global development of a Catholic social doctrine, beginning with the encyclical *Rerum Novarum* (1881), was integrated by the Swiss Catholic conservatives, who then tried to attract parts of the working class (Altermatt 1979). As a result, the Catholic conservatives did not try to incorporate working class' interests only due to ideological change. As shown by Walter (2022), the development of a Catholic social doctrine was a reaction to the multiplication of Catholic workers' associations resulting from rural-urban migration flows. In rural areas, existing business and farmers associations within the Catholic conservatives opposed the development of workers' associations whereas in urban cities, Catholic workers did not meet such opposition and were thus free to develop their own Catholic organizations.

This polarization of social conflict around a left and right bloc became even more salient after the second general strike of 1918, which was the biggest strike and social protest in Swiss history. The latter was followed by the introduction of the proportional representation system: the Radicals lost their hegemony in the parliament and the Catholic conservatives, who meanwhile created the Christian Democratic Party (PDC) in 1912, and the Socialists became important political actors in the National Council. The Socialist Party (PS) consolidated a left bloc while the Radical-Democrats (PRD), the Christian democrats and the Agrarians formed an alliance against the left.

This coalition between the PRD, PDC and Agrarians and its close links with business associations such as the Swiss Union of Commerce and Industry, also called *Vorort* (created in 1870), led many scholars to name this dominant coalition the "bourgeois bloc" (Mach 2007). The dominance of this bourgeois bloc is considered to be a fundamental feature of the Swiss hybrid model, along with the constrained policy capacity of the state and the tradition of self-regulation by economic actors and associations (Trampusch and Mach 2011, 43).

Inspired by Regulation Theory and the neorealist approach, Charles and Vallet (2024) argue that the dominant social bloc underpinning the main key institutional forms and the economic success of late 19th century's Switzerland was a "bourgeois-peasant" bloc gathering the major business interest associations: the Swiss Federation of Commerce and Industry (USAM, or *Vorort*) and the Swiss Farmers' Union (USP). During the second half of the 19th century, especially during the Second Industrial Revolution, Switzerland's socio-economic model became gradually a form of organized capitalism based on five key institutional forms: a bank-oriented industry; a nationalized monetary system and a strongly independent central bank; federalism and direct democracy favoring compromises; a state involved in active infrastructure building; and a trade policy centered around a "combative protectionism" strategy. On top of the institutional hierarchy, international insertion played a crucial role since access to international markets was a matter of survival for a large part of the export-oriented large Swiss industries represented at the political level by the *Vorort*. Traditional industries and the agricultural sector constituted the second half of this bourgeois-peasant bloc, and their political demands were met through various domestic compensation policies. According to Charles and Vallet (2024), the contradictory interests between the export-oriented and domestic-oriented industries were

resolved by the need of Swiss capitalists to defend their interests against the state and foreign industries. This explanation is not entirely satisfactory, since, as David and Mach put it, the growing popular protests and opposition from the working class also play an important role in the unification of the bourgeois bloc: “The formation of a ‘bourgeois bloc’ at the end of the nineteenth century was dictated as much by the political institutions of conflict resolution as by the will to fight the rise of the labour movement” (David and Mach 2006, 9).

However, the extent to which this dominant bloc can truly be described as bourgeois or bourgeois-peasant must be questioned, in addition to the fact that there is no precise definition given in the literature. In the sense given in the latter (Meuwly 2008; Mach 2007; Trampusch and Mach 2011), the bourgeois bloc refers to a political coalition between the Radical democrats, the Christian democrats and the Agrarians (now UDC) and its close ties with business interest associations of both the export-oriented industries and domestic-oriented sheltered sectors. Although this term has the merit of underlying the heterogeneity of the DSB, the bourgeois-peasant bloc in the sense given by Charles and Vallet (2024) does not even explicitly include political actors, and restrict this definition to the interests defended by the major business interest associations. This bloc is hence bourgeois only because it gathers right-wing parties and business interest associations, a definition which is rather narrow and can be misleading since it does not take into account the social basis of the bloc. From a neorealist perspective, which seeks to identify the relevant dominant and dominated social blocs underpinning a given socio-economic model, a social bloc cannot be reduced to an alliance between political parties. More precisely, social blocs are “alliances between socio-political groups united around a defined political strategy” (Amable and Palombarini 2023, 3). These socio-political groups are sets of agents expressing similar social demands, or policy expectations. Contrary to what has been recently argued by May, Nölke, and Schedelik (2024), the neorealist conception of social blocs is thus not strictly “voter-based” since social blocs are aggregations of different socio-political groups which are not confined to voters.

In addition, calling this right-wing coalition bourgeois ignores, for instance, the fact that this bloc gathered some popular socio-economic groups such as small-business owners and peasants, or even parts of the Catholic working class. In the sense given by Amable and Palombarini (Amable and Palombarini 2018), the bourgeois bloc observed in France corresponds to the aggregation of the wealthiest and most educated groups of the traditional left and right blocs. I argue that, from a neorealist perspective, the Radical bloc of the 19th century and the right-wing coalition of the late 19th and of the 20th centuries cannot be described as bourgeois and that other terms such as “liberal conservative” or simply “right” bloc are more suited. From this perspective, socio-political groups having strong bourgeois traits are only a part of the DSB, and their institutional and ideological domination within the bloc (Amable and Palombarini 2023) depend on various socio-economic, ideological and historical dynamics. Another issue of the literature on the bourgeois bloc is the overemphasis on the role of business interest associations. It is true that the latter hold a privileged role in Swiss politics, due to the weakness of the Swiss central state and the importance of pre-parliamentary phase in public decision-making (Sciarini 2023). However, social groups have other means to influence policy making other than through business associations or trade unions, such as party politics, public

protests or referendums. This concept of a bourgeois bloc reflecting the all-powerful power of business interests associations is also mirrored by an abundant and important literature on the structural power of Swiss elites. According to studies from the sociology of elites' perspective, the Swiss bourgeois bloc is synonym with the political and organizational power of the Swiss elite networks which are considered as the sole social basis supporting the Swiss model of coordinated or organized capitalism. From this perspective, Switzerland is considered to be ruled by a "close-knit elite that simultaneously embraces political, economic and military positions" (Bühlmann, David, and Mach 2012, 727). Rossier et al. (2022) describe the transformations of the Swiss elites in three periods. The first period (late 19th to 1945) corresponds to a consolidation period during which Swiss elites, due to the small size of the country, organized themselves through organizational networks and compromises between interest groups and political parties. The second phase (1945-1990) corresponds to an integration stage. After unions and farmers' associations were integrated into the elite networks during the 1930s, the second stage marked the culmination of elites' coordination and cohesiveness. In the latest stage (from 1990s onwards), a fragmentation dynamic destabilized the traditional mode of coordination of the national elite, due to increasing internationalization and globalization. Although the contributions of the Swiss sociology of elites' perspective are crucial to understand the dynamics of an important branch of Swiss social groups, this "oligarchic" approach to the Swiss social blocs implicitly considers the rest of the Swiss population as a politically dominated group passively accepting the institutional change and the socio-economic model promulgated by the elites. In other words, both the bourgeois bloc and oligarchic perspectives omit the importance for the Swiss socio-economic model to be supported by a social bloc composed of different socio-political groups united around a political strategy. The narrow conception of a Swiss DSB which would be limited to a political alliance between political parties and business associations must hence leave room to a more accurate investigation starting from the identification of the different Swiss socio-economic and socio-political groups, and the different political strategies which sought to aggregate the relevant socio-political groups into social blocs.

Such an analysis, especially regarding the identification of Swiss socio-political groups, may prove delicate for 19th and 20th century Switzerland, due to the lack of good-quality individual survey data, which only began to be collected systematically and consistently from the 1990s onwards. Until the post-war period, the evolution of the Swiss social blocs could nonetheless be resumed as follows, based on short reconstruction of the Swiss social blocs eschewed above. From the middle to the late 19th century, the Radicals formed a dominant social bloc, which was strongly heterogeneous in terms of the socio-political and socio-economic groups gathered by its political strategy centered around the construction of a central state. This dominant social bloc was composed by the working class (mainly through the Grütli Union), and an urban elite composed by the most educated (journalists, lawyers, teachers) and the wealthy industrial bourgeoisie (entrepreneurs, bankers, industrialists). This DSB was united by their willingness to modernize the Confederation against the Catholic conservatives. A second period, from the late 19th to the second World War, marked the recomposition of the DSB and its transformation into a liberal conservative bloc. Parts of the working class and

of the democrats (educated elite) joined the emerging socialist-left bloc while the Christian democrats attracted part of the working class while being progressively incorporated into the DSB, along with the Agrarian Party which represented the peasant and farmer classes.

Analyses of the first Swiss post-electoral surveys which were conducted in the 1970s show the heterogeneity of the Swiss “bourgeois bloc” and that the term bourgeois is not valid for the right bloc as a whole. The social basis of the Radical-Democratic Party was constituted by large employers/liberal professions and managers. The UDC relied heavily on small business owners’ support while the PDC’s social basis was rather cross-class (L. Rennwald 2014; Tawfik 2019). Therefore, of the three right-wing government parties, only the Radical-Democratic Party’s social basis can truly be described as bourgeois. Regarding the support for the Socialist Party, the latter was neither a bourgeois nor solely a popular party, but a hybrid-class party whose social basis was constituted by socio-cultural professionals and the working class (L. Rennwald 2020).

The coalition between the Radical democrats, Christian democrats and Agrarians against the left bloc took deeply roots into the Swiss socio-political system: it persisted during the post-war period and still shapes Swiss politics to some extent nowadays (Mazzoleni and Meuwly 2013; Meuwly 2008, 2010). A striking feature of the Swiss DSB is its persistence and resilience since 1848: even though this bloc underwent important transformations, especially after the introduction of the proportional system in 1918, it was always mediated by right-wing parties, first the Radicals and then an extended coalition with the Catholic conservatives and the Agrarians. Despite its incorporation in the parliament and government, the left bloc never truly became dominant in Switzerland.

To sum up, Switzerland’s traditional social blocs crystallized into an asymmetrical opposition between two blocs, which is summarized in Table 2.1. On the one hand, the dominant social bloc, which can be called liberal conservative, gathered the large employers and owners of the big industrialized and internationalized firms, medium and small business owners and farmers, and skilled workers from the private sector. At the political level, this socio-political group was represented by business interest associations such as the *Vorort* (now *EconomieSuisse*), and the Radical-Democratic Party. The program of the Radical-Democratic Party and policy demands from the business interests associations linked to the large industrialized firms and large employees correspond to the interests of large export-oriented industries: low social protection, low taxation, no barriers to external trade and promoting free trade through bilateral agreements.

Alongside this group were the medium and small business owners producing essentially for the national market, and skilled workers (managers) from the private sector. The policy demands from the medium and small domestic-oriented firms differed substantially from those of the large companies in terms of the degree of protection from international competition and public subsidies. Unlike the big corporations producing for foreign markets, small and medium firms felt more threatened by external competition, and, since they produced mainly for the internal and rather small Swiss market, they tended to ask for protection and public subsidies. On the political level, the agricultural sector was represented by the Farmers’ Union (USP,

created in 1897), while the Union of Arts and Crafts (USAM, created in 1879) defended the interests of small and medium domestic-oriented firms. These contradicting demands between the export-oriented and sheltered domestic-oriented sectors are one of the main factor behind the destabilization of the DSB in the 90s.

Table 2.1: Social blocs in Switzerland during the 70s and 80s. Classification based on Rennwald (2014), Tawfiq (2019).

	Socio-political groups	Policy demands
Liberal conservative bloc	<ul style="list-style-type: none"> <li>• Large industrial, competitive and export-oriented firms</li> </ul>	<ul style="list-style-type: none"> <li>• Low employment protection</li> <li>• Limited redistribution</li> <li>• Low tax level</li> </ul>
	<ul style="list-style-type: none"> <li>• Medium and small domestic-oriented firms, farmers</li> </ul>	<ul style="list-style-type: none"> <li>• Free-trade</li> <li>• Low tax level</li> <li>• Low employment protection</li> <li>• Public transfers (subsidies)</li> <li>• Protection from international competition</li> <li>• Lower taxes</li> </ul>
Left bloc	<ul style="list-style-type: none"> <li>• Skilled workers from the private sector</li> <li>• Socio-cultural professionals, workers from the public sector</li> </ul>	<ul style="list-style-type: none"> <li>• State intervention</li> <li>• Increase in real wages</li> <li>• Expansionary macroeconomic policy</li> <li>• Increase in real wage</li> <li>• Social and employment protection</li> <li>• Protection from external competition</li> </ul>

On the other hand, the main social bloc excluded from the DSB was the left bloc, constituted by socio-cultural professionals, workers from the public sector, and production workers from



the private sector. These groups were mediated by the Swiss Socialist Party, which was incorporated into the government during the post-war period, but never really managed to dominate the parliament and government. Other organizations, such as the Swiss Federation of Trade Unions (USS, founded in 1880) also play a great role in the representation of workers' interests.

In its early days, the Swiss Socialist Party had strong communist stances. Its second program (1904) had strong Marxist and anti-capitalist inspirations: it advocated nationalizations, collectivization, and economic planning as ways out of capitalism. In the post-war period, the party moderated its program and became more a social-democratic reformist party. The main policy demands of the revised program of 1959 were focused on social reforms and expansionary policies within the capitalist framework: extending social protection; promote economic growth and anti-cyclical Keynesian macroeconomic policies and ensure full employment (Degen 2022).

The traditional Swiss social blocs have thus been identified and their evolution since the 19th century until the second half of the 20th century has been shortly traced. Before moving on to an in-depth analysis of the recomposition of these social blocs during the crisis of the 90s, it is necessary to take a long-run perspective on the evolution of these blocs in the last decades.

## **2.2 Swiss social blocs and socio-economic factors: 1980-2016**

How have the social bases of the liberal conservative and left blocs evolved since the 70s? How are the support for the main Swiss social blocs influenced by socio-economic characteristics? The objective of this section is to explore the composition of the Swiss social blocs in terms of socio-economic characteristics and assess their evolution in the last decades. This approach represents also an opportunity to contribute to a flourishing literature on the links between political divides and structural factors.

In fact, a recent trend in political economy developed a tremendous analysis of the long run transformations of political cleavages, social blocs, and voting outcomes in almost all democratic countries around the world. The popularity of inequality studies, after the contributions of renown economists such as Atkinson (2015), Milanovic (2016) and of course Piketty (2014), economists recently became interested in the problematic of social conflict and political cleavages. One possible explanation of this sudden interest is the inequality paradox: increasing inequality and neoliberal reforms did not pave the way for growing support for redistribution, taxation of top income and wealth owners, or for left parties. The same paradox could be applied to a “climate change paradox”, that is, the fact that the growing emergency or environmental issues were not followed by increasing support for green parties. For instance, the Swiss federal election of 2023 marked the end of the “green wave” and a sharp decline of Swiss green parties.

Those paradox thus gave way to a recent literature linking political cleavages and voting outcomes as function of a set of socio-economic factors, mainly income and education levels. Trying to explore this inequality paradox, Piketty (2018) underlines the fact that, rather than bringing back class-based divide back to its post-war salience, the global rise in inequality since the 1970s was followed by the emergence of a new cleavage and a multi-elite party system. During the post-war period, the electoral support for the left parties in The US, UK and France was mainly constituted by popular classes with low income and education levels whereas right-wing parties were supported by high income and education voters. The popular element of the support for the left then transformed in the 1970-80s: left parties became the bloc of the highly educated, thus becoming the *brahmin left*, whereas the right kept the support of the wealthy (*merchant right*) (Piketty 2018, 2019). A further project, which gave birth to the World Political Cleavage and Inequality Database (WPID), showed that these transformations affected almost all Western democracies (Armory Gethin, Martinez-Toledano, and Piketty 2021).

Underlying the rise of a new cleavage in the 70s and 80s, Piketty and the WPID tackle a topic which is in fact well-known in political science: the emergence of a cleavage centered around cultural values, that Piketty calls the “nativists-internationalists” divide, which cuts across the traditional class conflict and is the result of the increase in average education level and of globalization. This “cultural cleavage” has been given as many labels as it has analysts among political scientists.

Inglehart notably argued that strong economic growth and increase in standard-of-living experienced by advanced capitalist countries in the post-war period made the latter’s populations less likely to hold “materialist” values, as better living conditions shifted their preoccupations and values towards what the author famously called “post-materialism” (Inglehart 1971, 1990; Inglehart and Flanagan 1987). Kitschelt then claimed that “increasing affluence, greater educational accomplishments, changes in the sectoral composition of labor markets, and again the welfare state” (Kitschelt 1994, 21) influence citizens’ preferences on a new cleavage relatively independent from the economic (in Kitschelt’s terms “distributive”) divide: the “libertarian-authoritarian” cleavage. Preferences on this new cleavage, Kitschelt hold, are shaped by an interdependence between market and organizational experiences, or “job situations”. For instance, less skilled employees in “object-processing job situations” are more likely to hold authoritarian values whereas: “individuals in people-processing occupations with higher education tend to be more libertarian” (Kitschelt 1994, 25).

A certain branch of the literature on political cleavages suggested that this cultural divide is not new, and that political space has always been reducible to two dimensions. Rather, it is the meaning of the cultural divide which transforms over time (Kriesi et al. 2006). In fact, the idea of a cultural cleavage goes back at least to Lipset and Rokkan (1967)’s seminal contribution on the origins of political divides in Western societies. Lipset and Rokkan (1967) notably argued that the national revolution (beginning with the French revolution) gave birth to two cleavages centered around cultural values: the conflict between the nation-state builders and the church, and the conflict between the promoters of the central state’s culture and the culture of the

peripheral regions' inhabitants. The industrial revolution, on the other hand, gave birth to two economic cleavages: a class conflict between capitalists and workers, and another class conflict between the urban and rural elites (or between the primary and secondary sectors). The cultural divide therefore originally took the form of a religious conflict, which could totally or partially coincide with a center-periphery cleavage (Lipset and Rokkan 1967).

Kriesi et al. (2008) have emphasized the impact of globalization on the transformation of political cleavages. The threefold aspects of globalization, increasing international competition between economic actors; increasing migration; and integration to supra-national organizations, led to the emergence of a "integration-demarcation" divide between the "winners" of globalization, who are likely to include "entrepreneurs and qualified employees in sectors open to international competition, as well as all cosmopolitan citizens" and the "losers" of globalization which include "entrepreneurs and qualified employees in traditionally protected sectors, all unqualified employees, and citizens who strongly identify themselves with their national community" (Kriesi et al. 2008, 8). Exploring the socio-economic determinants behind this globalization divide, Teney, Laceywell, and Wilde (2014) showed that opponents of globalization are more likely to be unemployed, less educated and more attached to national identity. Other scholars have labelled this cleavage the "transnational cleavage" (Hooghe and Marks 2018) or the "universalism-particularism" cleavage (Bornschieer 2010; Zollinger 2022).

Going back to Piketty's framework, the combination of this new cultural cleavage with the traditional class-based conflict draws a bi-dimensional political space in which four social blocs are possible: the brahmin left, also called the internationalist-egalitarian bloc which is on the left both culturally and economically; an internationalist-inegalitarian bloc (merchant right) on the left culturally but economically on the right; a nativist-inegalitarian bloc on the right culturally and economically; and a nativist-egalitarian bloc which is culturally conservative but economically on the left (Piketty 2018, 2019).

Testing the relevance of the brahmin left vs merchant right divide, Amable and Darcillon (2022b) offer different perspectives over the possible coalitions resulting from this bi-dimensional political divide. On the one hand, preference for redistribution decreases with both education and income levels. On the other hand, support for globalization issues (such as immigration) is not only positively influenced by education level, but also positively associated with income. Amable and Darcillon (2022b) suggest the possibility of a rapprochement between the brahmin left and the merchant right over policy preferences, giving birth to a bourgeois bloc uniting the wealthiest and most educated groups from the left and the right. Amable and Darcillon (2022a) show that the brahmin left vs merchant right divide has not taken place in every country and that the classical popular left versus bourgeois right opposition is still relevant for many countries.

In this context of multi-elite party system and multidimensional political divides, Switzerland is an interesting case study. A widespread idea claims that the economic cleavage always played a relatively minor role in Switzerland. In Switzerland, class conflict was always cut across a wide variety of other divides, the most important one being the religious cleavage (Lijphart 1979). Moreover, due to strong standard-of-living increase throughout the 20th

century, Switzerland is also often considered as a forerunner in the emergence of this “cultural” cleavage, and in the precociousness and strength of the educational shift. Following Inglehart Silent Revolution’s argument and empirical estimations, Switzerland shows relatively high level of post-materialism due to its high level of economic development (Inglehart 2009).

As a team part of the WPID project puts it, Switzerland is the country where “the shift of the higher educated towards the left has been the most dramatic” (Durrer de la Sota, Gethin, and Martinez-Toledano 2021, 4). During the post-war period until the 1990s, the left bloc (mainly the PS) was supported by low income and education voters while right-wing parties showed different patterns of class support, which again call into question the extent to which this bourgeois bloc can truly be characterized as “bourgeois”. Of the three parties constituting the bourgeois bloc, only one of them, the PRD-PLR, had clearly a bourgeois composition since it is consistently supported by the most wealthy and educated groups since the post-war period. The PDC and the UDC cannot really be described as bourgeois parties since, according to Durrer de la Sota, Gethin, and Martinez-Toledano (2021), the support for the two parties was negatively associated with income and education. While this negative association tends to decline for the PDC, it became even more strong for the UDC since the 90s. After that period, the left bloc became brahmin in the sense that it gathered strong support among the most educated classes, while its popular support moved either into abstention or to the UDC.

This article by Durrer de la Sota, Gethin, and Martinez-Toledano (2021), shows that Piketty’s brahmin left vs merchant right divide is partially valid in Switzerland: a Swiss brahmin left indeed exists through the Swiss Socialist Party. However this bloc do not face a merchant right, but rather a bourgeois bloc gathered by the Radical-Liberals and a popular bloc which support the UDC or do not support any party. Rather than being constituted by a brahmin left, a merchant right and a nativist bloc, Switzerland’s tripolar political space is rather divided between a bourgeois bloc, a brahmin left and a popular bloc.

Table 2.2: The four possible social blocs based on a bi-dimensional political divide and income and education levels. This classification is based on Durrer de la Sota, Gethin, and Martinez-Toledano (2021) results (see their appendix). The term bourgeois bloc and this table were inspired by Amable and Darcillon (2022a).

Income/ Education	High level of income	Low level of income
<b>High level of education</b>	<p><b>Bloc Bourgeois</b></p> <ul style="list-style-type: none"> <li>• PLR-PRD</li> <li>• Greens since 2011-2019</li> </ul> <p>Policy preferences:</p> <ul style="list-style-type: none"> <li>• Against redistribution</li> <li>• Against state intervention</li> <li>• For equal rights &amp; chances CH-foreigners</li> </ul>	<p><b>Brahmin</b></p> <ul style="list-style-type: none"> <li>• PS since the 90s</li> <li>• Greens until 2011-2019</li> </ul> <p>Policy preferences:</p> <ul style="list-style-type: none"> <li>• For redistribution</li> <li>• For state intervention</li> <li>• For equal rights &amp; chances CH-foreigner</li> </ul>
<b>Low level of education</b>	<p><b>Merchant</b></p> <ul style="list-style-type: none"> <li>• None</li> </ul> <p>Policy preferences:</p> <ul style="list-style-type: none"> <li>• Against redistribution</li> <li>• Against state intervention</li> <li>• For more rights and better chances for the Swiss</li> </ul>	<p><b>Popular groups</b></p> <ul style="list-style-type: none"> <li>• UDC</li> <li>• Abstention</li> <li>• PS until the 90s</li> <li>• Christian parties until the 90s</li> </ul> <p>Policy preferences:</p> <ul style="list-style-type: none"> <li>• For redistribution</li> <li>• For state intervention</li> <li>• For more rights and better chances for the Swiss</li> </ul>

The transformation of party systems into a multi-elite and tripolar political space came with important change in the structural basis of party support. Before that, scholarly debates emphasized the decline of class voting, measured through the Alford index, and the reconsideration of social class as a useful concept (Clark and Lipset 1991). However, the rise of the

radical right during the 90s and the proletarianization of its electoral basis weakened the end of class voting argument and scholars soon became interested in explaining why workers became part of the radical right's social basis. Oesch (2008a) argued that economic motivations play a lesser role than cultural determinants in explaining the success of the radical right: the latter's supporters being more likely to feel threatened by immigrant's impact on their country's culture rather than on their standard-of-living. Against the argument of the decline of class voting, Oesch (2008b) suggested that position on a new class structure, measured by his own class schema (Oesch 2006), influence individual's preferences on both the cultural and economic cleavages and thus class voting, defined as systematic links between social class and party support.

Empirically, Oesch (2008b) observed that, in the late 90s, the Swiss far right draw strong support from production and service workers and from small business owners while the center-right gathered support from large employers, small business owners and managers; and the left's only above-average support was constituted by socio-cultural specialists. Trying to find the causality behind these new class voting patterns, Oesch (2008b) and Oesch and Rennwald (2010) took and developed Kitschelt (1994)'s argument. In Oesch's class schema, class locations are divided vertically and horizontally: different class economic interests come from hierarchical employment relationships while class differences in cultural attitudes are the results of occupations' "work-logics". Thus, people employed in "technical" work-logic professions such as production workers (carpenters, assemblers, mechanics...) are more likely to hold conservative values whereas service workers (nurses, waiters...) and socio-cultural specialists (teachers, journalists, social workers...) employed in interpersonal work-logic occupations are more likely to hold progressive-libertarian attitudes since they experience more social interactions and their occupation requires tolerance for cultural diversity (Oesch 2006; Oesch and Rennwald 2010).

This kind of argument relating progressive and conservative attitudes to different "work-logics", explaining thus why, for instance, the working class supports the far-right despite their economic interests, is however overly deterministic and remains a purely theoretical argument with no empirical evidence. Another explanation deserving more attention and research relates to changes in the hierarchy of preferences: despite the fact that working classes are surely on average less racists than before, their support for the far-right could have increased because of a change in the hierarchy of their social expectations, placing demands of stricter immigration policies above their demands for left-wing economic policies due to a strong neoliberal hegemony excluding any type of left-wing economic reforms as legitimate, thus leaving workers' conservative demands as the only acceptable ones in the eyes of the dominant ideology (Amable and Palombarini 2022, 108–9).

Whereas Oesch (2008b) and Oesch and Rennwald (2010) conducted cross-country analyses of panel and post-election survey data with a rather limited time frame, in more recent contributions, Oesch and Rennwald (2018) explore the structural determinants of the transformation of political space from a two-dimensional to a three-dimensional configuration since the rise of radical right parties in Western countries using seven rounds of the European Social Survey

data (from 2002 to 2014). This study claims to find evidence that the left is strongly supported by socio-cultural professionals who are culturally libertarian and economically on the left whereas the center-right is supported by large employers and managers who are on the right economically but culturally progressive. The whole argument is that the exogenous rise of the radical right made the working class and small-business owners “contested strongholds” and thus caused the political space to become tripolar: the far-right, thanks to its culturally conservative stances, can compete with the left for working class support and with the center-right for small-business owners’ support. Small artisans and business owners are also divided between their support to the center-right and the far-right: their economic preferences make them closer to the center-right while their cultural preferences are closer to the far-right.

Before this shift took place, the traditional Swiss left bloc aggregated by the Swiss Socialist Party was a hybrid-class coalition gathering socio-cultural professionals (teachers, academics, journalists...) and production workers, but also from technicians, clerks and service workers (L. Rennwald 2020). This strong class heterogeneity of the Swiss left declined: an analysis of Swiss post-election surveys for 2003 and 2007 shows that the Swiss left was deserted by production workers who directed their support for the Swiss People’s Party due to cultural issues (Oesch and Rennwald 2010). Using European Social Survey data for 2011 and 2014, L. Rennwald (2020) shows that socio-cultural professionals remain the only “party preserve” of the Swiss left.

The empirical agenda of the present study is to test the validity and relevance of the literature reviewed above. More specifically, how are socio-economic factors shaping the composition of each Swiss social blocs? The objective of the empirical analysis conducted here is to test the following hypotheses regarding party support (PS), political leaning (PL), and issue positions (IP), derived from the contributions of the WPID project (Piketty 2018, 2019; Durrer de la Sota, Gethin, and Martínez-Toledano 2021; Armory Gethin, Martínez-Toledano, and Piketty 2021; Amory Gethin, Martínez-Toledano, and Piketty 2022); Oesch and Rennwald (2018); and Amable and Darcillon (2022b, 2022a):

1. *Brahmin left versus merchant right hypotheses*

- BvsM1. The support for the left and left-wing parties should be negatively associated with education and income levels in the first time periods. The negative association with education should then decrease and become positive over time.
- BvsM2. The support for the right and right-wing parties should be positively associated with education and income in the first time periods and the positive association with education should decrease over time.

2. *Bourgeois bloc hypotheses*

- BB1. The support for redistribution and state intervention should decrease with education and income. Support for equal rights between Swiss citizen and foreigners should increase with education and income.

- BB2. Support for right-wing parties and the right should increase with both income and education levels.

### 2.2.1 Data and empirical strategy

To test the hypotheses above, two types of data sources are especially relevant. The *Swiss Election Studies* (SELECTS) cumulative dataset is a harmonized dataset merging every Swiss post-election (federal assembly elections, which take place every four years) surveys from 1971 to 2019 (Tresch and Lutz 2022). Since SELECTS data are already drastically analyzed in the literature (for instance by Durrer de la Sota, Gethin, and Martinez-Toledano (2021)), I contribute to the existing research by analyzing another data source, the *VoxIt* cumulative dataset which harmonizes every post-vote surveys from 1981 to 2016 (Brunner, Kriesi, and Loréтан 2017).

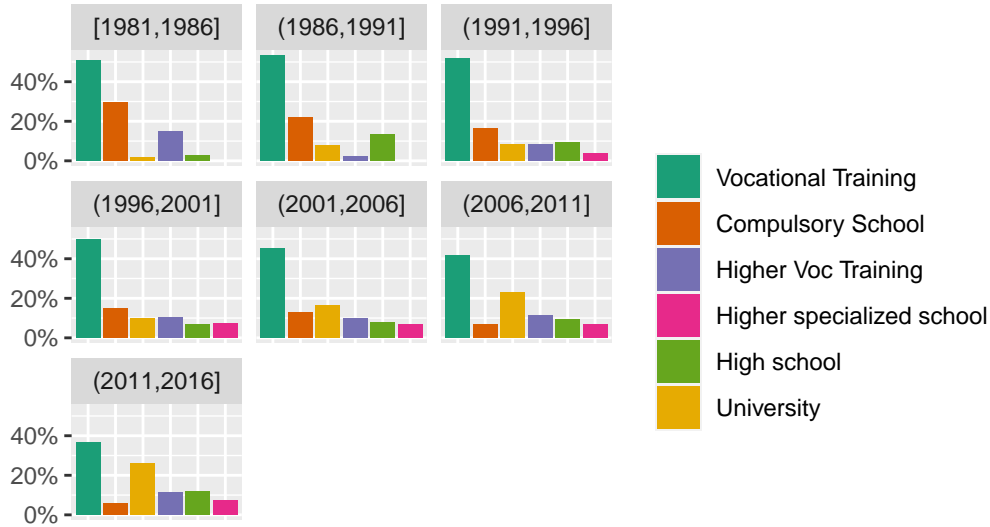
In each poll, respondents were asked which party they supported and their self-placement on the left-right axis on a Likert 10 points scale. The main dependent variables are dummy variables for party identification and political leaning computed from these two variables. Three other variables regarding issue position on public policies such as redistribution, state intervention and equal rights between Swiss citizen and foreigners are also considered.

The main independent variables are education and income levels. The variable “educ” is a qualitative variables on the highest achieved educational level with 6 categories ranging from primary school to university. It is important here to underline the peculiarities of the Swiss education system. Switzerland’s education system is strongly based on vocational training. As a result, other education categories tend to be missing for a lot of year-periods of the dataset. To solve this problem, but also to simplify the data structure, years are aggregated into several time periods to avoid separation issues.

Figure 2.1 shows the proportions of each level of education and their evolution over time. In the 1980s, most of Swiss respondents completed either vocational training or compulsory school. The share of compulsory schooling declined over time, reflecting the overall increase in average education, as seen also by the increase in the share of university graduates. The share of vocational training declined over time, but remains the most widespread education level in Switzerland. For the regression analysis, the categories “university” and “higher specialized school” are merged together since the absence of the latter in the first two time periods could cause estimation issues. This does not pose a major issue since higher specialized schooling is rather similar to university in Switzerland.

Regarding income levels, the dataset contains two variables. The variable “nivmena” represents the household’s standard of living in four categories (high, middle-high, middle-low, low) available from 1981 to 1991 whereas “revenu” is an income bracket variable in five categories available from 1992 to 2016. To harmonize these two variables in order to construct one single income or standard of living variable, I recode the variable “revenu” in order to make it similar to “nivmena” by grouping the income brackets categories 3 (from 5’001 chf to 7’000 chf) and 4





Data source: VoxIt

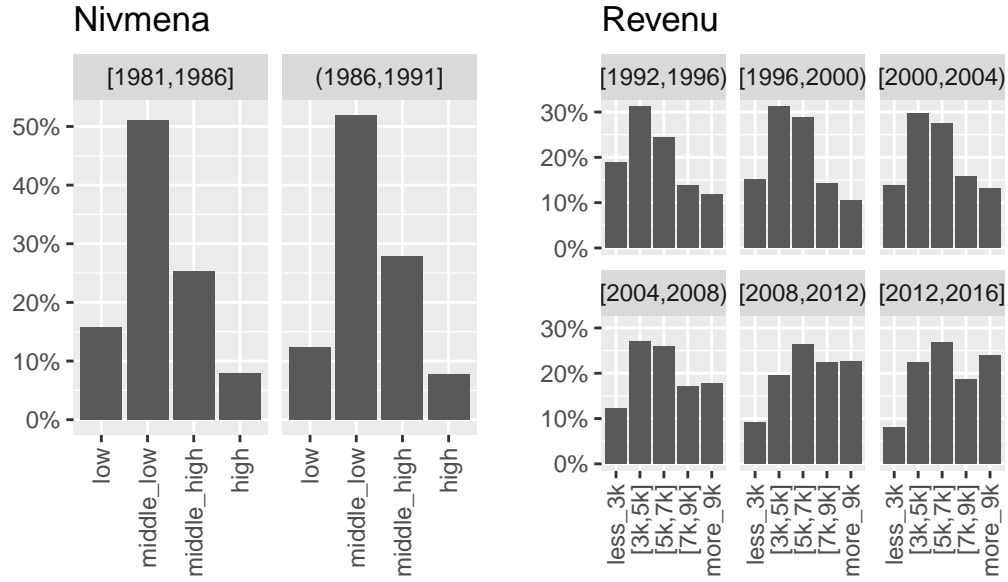
Figure 2.1: Education Levels in Switzerland: 1981-2016

(from 7'001 to 9'000) into the “middle-high” category. This harmonized variable is used only in regressions for party support because political leaning and issue position variables are not available until 1992 (thus for these dependent variables the variable “revenu” is used as an independent variable for income).

A series of binary logit regressions for party support, political leaning, opinion on redistribution, state intervention and equal rights between Swiss and foreigners are conducted. The results presented in this section come from the following model:

$$P(y_{it} = 1) = \text{logit}^{-1}(\alpha + \beta_I I_{it} + \beta_E E_{it} + \beta_{I_{it}E_{it}} I_{it}E_{it} + \gamma X_{it} + \eta_1 \text{Year} + \eta_2 \text{Year}I_{it} + \eta_3 \text{Year}E_{it}) \quad (2.1)$$

With  $I_{it}$  and  $E_{it}$  the income and education level of individual  $i$  in period  $t$  and  $X$  a vector of socio-demographic characteristics control variables which were available in the dataset for all time periods. The controls are for age (grouped into 4 categories), gender, religion, linguistic region (French, German or Italian), marital status and house ownership.  $\text{Year}$  are dummy variables for time periods. The models include interaction terms between education and income as well as between income, education and time period in order to assess the temporal evolution of the correlation between the dependent and main explanatory variables. Income and education are treated as categorical variables, with vocational training and low income as reference categories. The results are presented in the form of average marginal contrasts which



Data source: VoxIt

Figure 2.2: Descriptive statistics: variable nivmena and revenu

allow to compare the difference in average predicted probabilities between groups of interests, in our case, between highest and lowest income groups and between university graduates and vocational training graduates<sup>4</sup>.

Before running the model presented above (Equation 2.1), simple linear models regressing the dependent variables on time periods were estimated as a descriptive way to evaluate the proportions' overall time trends in the sample (except for party support, for which general descriptive statistics were computed). The results for party support (Figure 4.1) show that Swiss citizen are most likely to not support any party, even though the proportion of no party support has declined over time. Among political parties, the Swiss Socialist Party has the highest proportions of support, whereas The Radical-Democrats rank second until 2001, when the UDC becomes the second largest party in the sample. Out of all government parties, only the UDC has seen its share rise while the support for all other government parties tend to decline. The discrepancy between estimated proportions for party support and actual party strength during the national elections suggests that UDC's support is strongly underestimated in the sample (see Figure 2.6 and Figure 4.1 in the appendix).

Regarding political leaning, identification with neither the left nor the right increased until 2000 (50%) and then gradually declines 2016 (at around 30%). Left leaning slightly increased

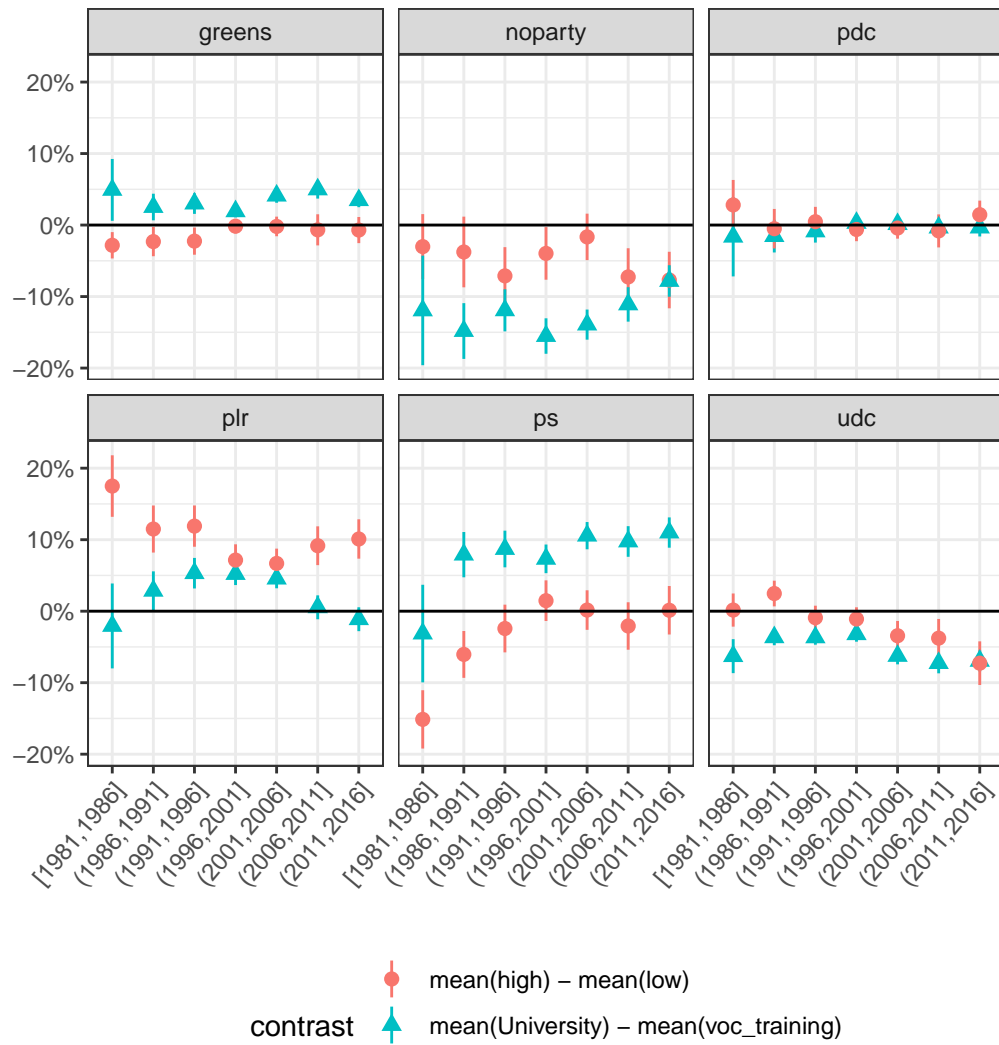
<sup>4</sup>The average marginal contrasts were computed using the comparisons or avg\_comparisons functions from the R package margineffects (Arel-Bundock 2024).

over time while right leaning declined until 2000, and then increased until recovering in 2016 about the same percentage (slightly below 35%) as in 1988. As for issue positions, the percentage of Swiss citizen supporting income redistribution remains rather stable above 50%. The proportion regarding support for equal rights and chances for foreigners has overall increased above 50% since 1993, even though it fell below 50% from 2010 to 2014. Interestingly, the proportion for state intervention's support has increased rather significantly since the 90s, but remains below 40% (see Figure 4.2 and Figure 4.3 in the appendix).

Figure 2.3 shows average marginal contrasts for each party or no party support in each time periods. The results partially confirm those of Durrer de la Sota, Gethin, and Martinez-Toledano (2021) and hypotheses BvsM1 and BvsM2. First, the Swiss Socialist Party (PS) used to be supported by relatively low education and income groups in the 1980s and became indeed a brahmin left party over time: the difference between the highly educated and vocational training graduates became positive in the second half of the 1980s and continued to increase in almost all time periods while the negative difference between the highest and lowest income groups decreased, indicating that the party's social basis became more educated and wealthier over time. However, the results show that the educational shift took place already in the 80s: university graduates already supported more the PS compared to vocational training graduates. This is an important result because it indicates that the PS became the party of the most educated in the 80s, before the economic and political crisis of the 90s and, most importantly, before the vote on the adhesion to the European Economic Area (EEA) in 1992, events which are often associated with the final stage of the educational shift and the PS's loss of popular support. Furthermore, it not clear whether the relationship between education and support for the Swiss Socialist Party was negative in the first half of the 80s, since the difference in average predicted probabilities is not significant for this time-period. Other regressions models that were considered by the author, mainly multilevel models using years and cantons as levels, rather show that this relationship for all the time frame of the dataset, suggesting that the Swiss Socialist Party was already a brahmin left party since the beginning of the 80s (see Figure 4.4 in the appendix).

Second, the Liberal-Radical Party (Radical-Democratic and Swiss Liberal Party before the latter merged in 2008) (PRD-PLR) shows a clear bourgeois basis for almost all time periods. The PRD-PLR Party is thus indeed the party of the wealthiest and most educated groups and is the only party that shows this pattern. However, the PRD-PLR seems to gradually become a merchant right party in the last time periods. In Durrer de la Sota, Gethin, and Martinez-Toledano (2021), Greens' supporters also became bourgeois between 2011-2019, with the difference between the top 10% income and bottom 90% income voting Green becoming positive during this period while the difference between the top 10% and bottom 90% educated was positive since the 80s. The results shown in Figure 2.3 rather indicate that the Greens were a brahmin left party from 1981 to 2016.

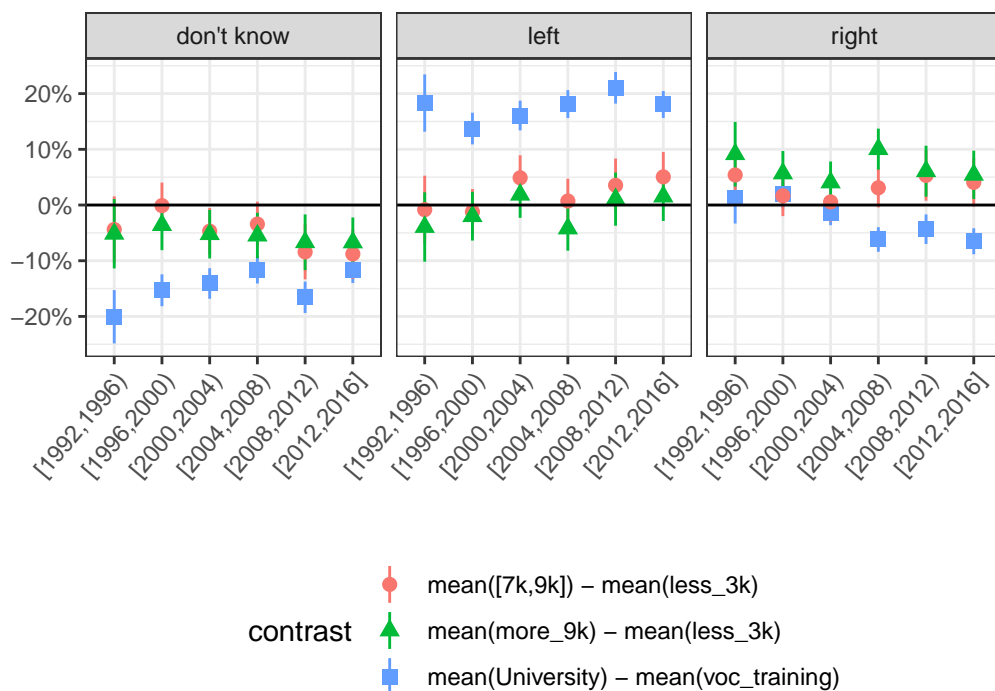
Third, the results show that the Swiss People's Party (UDC) was a merchant right party whose social basis became popular both in terms of education and income levels. Before the 90s the party gathered the less educated, but also the wealthiest income groups (hence "merchant" in



Data source: VoxIt

Figure 2.3: Party support in Switzerland: 1981-2016. Average difference in predicted probabilities between the highest and lowest income groups and between university and vocational training graduates.

Piketty’s terminology). Here the results contrast with those of Durrer de la Sota, Gethin, and Martinez-Toledano (2021) which show that the UDC was already a popular party gathering the less educated and poorest income groups in the 70s. Finally, we can see that popular groups, both in terms of education and income levels, are likely to not support any party relatively to the most wealthy and educated.

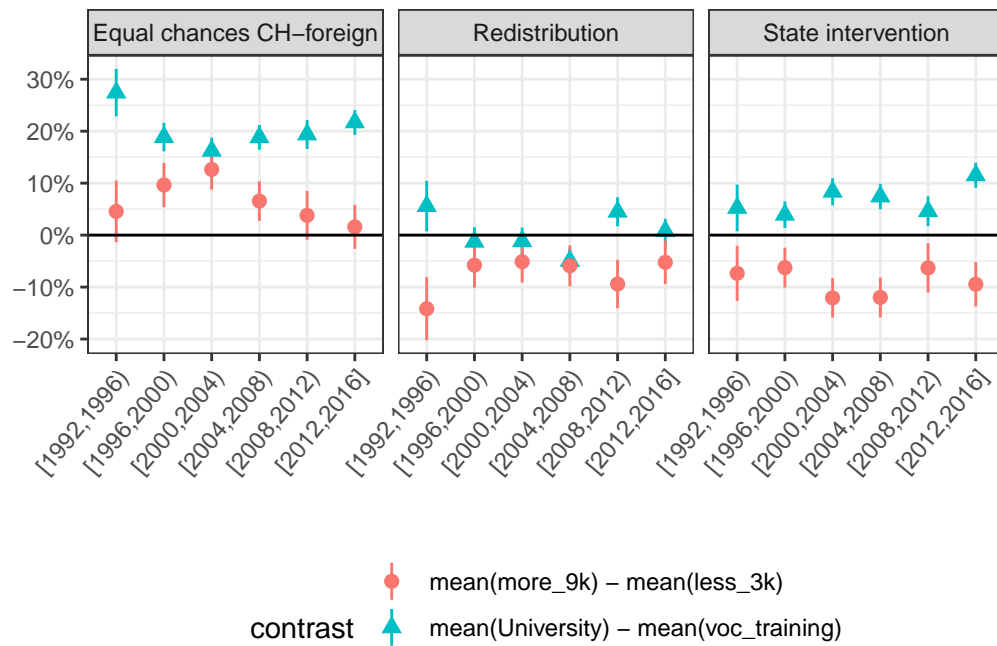


Data source: VoxIt

Figure 2.4: Political leaning in Switzerland: 1981-2016. Average difference in predicted probabilities between the highest and lowest income groups (less than 3000CHF per month vs more than 9000CHF), the second highest ([7'000chf-9'000chf]) and lowest income groups, and between university and vocational training graduates.

Figure 2.4 shows average marginal contrasts for left leaning, right leaning and no leaning. Interestingly, we can see that right leaning used to be bourgeois in the 80s and 90s while left leaning used to be brahmin. Over time, left leaning became bourgeois and right leaning became merchant. In the 80s and 90s, left leaning was positively associated with education, but not with income level while right leaning was positively associated with both. The positive difference between university and vocational training graduates declined for right leaning whereas it stayed rather stable for left leaning, indicating that the most educated support the left for all time periods while their support for the right declined over time. Popular groups tend to not identify with either the left or the right.

Finally, Figure 2.5 shows average marginal contrasts for issue positions regarding equal rights



Data source: VoxIt

Figure 2.5: Opinion on several social issues in Switzerland: 1992-2016. Average difference in predicted probabilities between the highest and lowest income groups (less than 3000CHF per month vs more than 9000CHF) and between university and vocational training graduates.

between foreigner and Swiss citizen, redistribution and state intervention. The support for equal rights is positively associated with both education and income levels. However, the positive difference between highest and lowest income groups tends to decrease since the 2000s, indicating a decline of the “progressive attitude” of the wealthiest income groups towards foreigners. The difference between income groups in the support for redistribution is negative for all time periods whereas the difference between education groups was declining from 1992 to 2008, but tends to increase since in 2008-2012, but is not significant in 2012-2016. Regarding support for state intervention, the differences between education groups and income groups are respectively positive and negative: university graduates tend to be relatively more in favor of state intervention and the highest income groups tend to be relatively against for all time periods, indicating a brahmin left vs merchant right divide over state intervention.

To sum up, the results overall confirm the brahmin left vs merchant right hypotheses, even more than the results of the WPID project. The support for the Swiss Socialist Party evolved from a traditional popular support towards a brahmin left support in the 80s. The results confirm the bourgeois composition of the PLR-PRD, but the latter seems to be gradually transforming into a merchant right composition since the beginning of the 2010s. The Greens’ supporters belong to the brahmin left since the 80s and there is no clear trend that the party evolved into a bourgeois party. Regarding the UDC, the latter used to be a merchant right party in the 80s, and evolved into a “populist” or, in Piketty’s terms, a “nativist” party in the 90s. Thus, unlike Durrer de la Sota, Gethin, and Martinez-Toledano (2021) and the classification presented in Table 2.1, the social basis of the PLR seems to be transforming into a merchant right, while the Greens have kept their brahmin elements.

However, if one looks at political leaning on a left-right axis instead of party support, self-identification to the right used to be rather bourgeois in the 90s, and then went merchant afterwards. Self-identification to the left used to be brahmin in the 90s and even became bourgeois in recent time periods, if one looks at the difference in predicted probabilities between the upper-middle income and lowest income groups.

Finally, regarding policy preferences, preferences for equal opportunities and rights between foreigners and Swiss citizen for the highest incomes and the most educated seemed to converge until the mid-2000s, and have been diverging ever since. The divide over state intervention shows a brahmin vs merchant opposition in all time periods, with the highest income group being in favor of free market (relatively to the lowest income group) and university graduates being relatively more in favor of state intervention (relatively to vocational training graduates). The divide over income redistribution is less clear-cut than the state vs market divide: the cleavage appears to be brahmin vs merchant for some time periods (mostly 1992-1996 and 2008-2012), solely negatively correlated with income (1996-2004) or show a bourgeois vs anti-bourgeois opposition (2004-2008), with both the most education and wealthy being relatively opposed to redistribution.

Table 2.3: The four possible social blocs based on a bi-dimensional political divide and income and education levels. Results from regression analysis of VoxIt data

Income/ Education	High level of income	Low level of income
High level of education	<p><b>Bloc Bourgeois</b></p> <ul style="list-style-type: none"> <li>• PRD-PLR from 1986 to 2006</li> </ul> <p><b>Policy preferences:</b></p> <ul style="list-style-type: none"> <li>• For equal rights &amp; chances Swiss-foreigners</li> </ul>	<p><b>Brahmin</b></p> <ul style="list-style-type: none"> <li>• Greens</li> <li>• PS since the 80s</li> </ul> <p><b>Policy preferences:</b>  </p> <ul style="list-style-type: none"> <li>• For equal rights &amp; chances Swiss-foreigners  </li> <li>• Support state intervention</li> <li>• Support redistribution in some periods</li> </ul>
Low level of education	<p><b>Merchant</b></p> <ul style="list-style-type: none"> <li>• PRD-PLR since 2006 UDC in 1986-1991</li> <li>• Self-identification to the right</li> </ul> <p><b>Policy preferences:</b></p> <ul style="list-style-type: none"> <li>• Against state intervention</li> <li>• Against redistribution</li> </ul>	<p><b>Popular classes</b></p> <ul style="list-style-type: none"> <li>• UDC since the 90s</li> <li>• No party support</li> </ul> <p><b>Policy preferences:</b></p> <ul style="list-style-type: none"> <li>• Better rights &amp; chances for the Swiss (until 2008)</li> <li>• Support redistribution in some periods (2004-2008)</li> </ul>

Overall, the regression analysis conducted in this section, using a different data source from the WPID project offers a new way to describe the evolution of the Swiss version of the brahmin left vs merchant right divide, which is summarized in Table 2.3. However, this analysis suffers from several limitations.

On the one hand, one possible methodological issue of *VoxIt* dataset is the clustering structure of the data. Swiss citizen are clustered into several geographical levels, the most important ones being the cantonal and communal (district) levels. Switzerland is a highly decentralized and federalist country: every day political life as well as economic and political institutions can be substantially different across cantons. Each canton has its own party system and some political parties, such as the *Lega Ticinensi* or *Mouvement Citoyen Genevois* (*Geneva Citizen*



*Movement*) exist only at the cantonal level. A possible methodological solution, which would take into account both the time periods and the cantons as levels in which data are clustered, was considered by the author: a series of multilevel regressions. However, the results from these multilevel regressions showed that the variations between canton were negligible and thus a more simple model, the one presented in this section, was chosen. Moreover, the results between the multilevel model and the model of this section give overall similar results.

On the other hand, the perspective adopted in this section is essentially a top-down approach, in which social blocs are derived from the relationships between party support, political leaning or policy preferences taken as dependent variables to be explained by a set of socio-economic characteristics. This is the method which is the most widespread in the literature, but it suffers from having an oversimplified view of social conflict, which is almost always reduced to two dimensions (the so-called cultural and economic divides). One important contribution of the neorealist approach is to underline the fact that social conflict is multidimensional ([Amable and Palombarini 2023](#)) and that a bottom-up approach, which defines socio-political groups endogenously from a set of policy preferences, can be more suited to analyze the formation of social blocs. The next section will therefore adopt this bottom-up approach which is specific to the neorealist approach by conducting a latent class analysis for the late 90s.

## 2.3 In search of the liberal conservative and left blocs

The objective of the present section is to assess empirically the reconfiguration of the Swiss social blocs during the 90s. More specifically, the goal is to analyze how the dominant Swiss social bloc was able to recompose during the crisis of the 90s using a bottom-up approach different from the previous section, and more aligned with the neorealist approach. One of the main limitations of the regression analysis of the previous section was to consider social groups as pre-defined based on different income and educational levels, or occupation, and only two cleavage dimensions.

As explained in the introduction, the neorealist approach starts from the diversity of social expectations emanating from the heterogeneity of the social structure. Socio-political groups could be endogenously defined based on the proximity of Swiss citizen's preferences regarding economic and public policies. A method that allow such procedure is latent class analysis (LCA). LCA is rarely used in social sciences, but has recently been applied as part of the neorealist approach to infer socio-political groups based on a set of policy preferences variables from post-electoral surveys. It was first used by Amable, Guillaud, and Palombarini ([2012](#)) to identify socio-political groups in France and Italy. The analysis resulted in the identification of twelve groups for France, and seven for Italy. The analysis of France's socio-political groups and social blocs was then improved in a subsequent paper by Amable ([2021](#)).

This section has for ambition to extend the contribution of Amable, Guillaud, and Palombarini ([2012](#)) and Amable ([2021](#)) to Switzerland by conducting LCA analysis using Swiss election

studies data. The methodology and approach used here closely follow the approach taken in Amable (2021).

### 2.3.1 The latent class model and estimation method

LCA allows to find a categorical structure from a set of categorical variables. The idea is that the Swiss population can be divided into different subgroups (socio-political groups given our theoretical framework), but that the latter are unobserved and can be indirectly estimated through a set of questions regarding policy preferences. The method employed here takes the following form:

$$f(y_i) = \sum_{x=1}^K P(x) \prod_{t=1}^T P(y_{it}|x) \quad (2.2)$$

With  $f(y_i)$  the probability density function corresponding to a particular response pattern  $y_i$ .  $y_{it}$  is the response pattern of individual  $i$  to a set of  $T$  survey questions taken as indicators in the model.  $P(X)$  is the probability to belong to a certain cluster given by the latent discrete variable  $x$ , with  $1 \leq x \leq K$ . The association between the latent class variable and the indicators  $T$  is estimated through binary logistic regressions (if the indicators are dichotomous) or, in our case, through multinomial logistic regressions (if the indicators have more than two un-ordered categories) (Jeroen K. Vermunt and Magidson 2016).

An important step of LCA is model selection, that is, choosing the model with the appropriate number of clusters. The criteria chosen to determine the number of clusters in this section is a bootstrap likelihood ratio test, a test which, according to the simulation tests performed by Nylund, Asparouhov, and Muthén (2007), is the most suited compared model selection based on information criteria (AIC, BIC...). A series of models were thus estimated, increasing the number of clusters with each new model until the bootstrap likelihood ratio test showed no significance of adding a supplementary cluster to the model<sup>5</sup>.

### 2.3.2 Estimation of Swiss socio-political groups in 1999: the 12 clusters model

For the LCA estimation, the Swiss post-electoral study of 1999 (Hardmeier et al. 2022) is chosen. The reasons behind this choice are technical, but first and foremost historical since the 90s represent a turning point in Swiss history and the evolution of the Swiss social blocs.

---

<sup>5</sup>The models were estimated with the software *LatentGOLD*.

### 2.3.2.1 The Swiss social blocs during the 90s

As explained in section 2.1, the Swiss socio-political landscape was structured around two social blocs before the 90s: a dominant liberal conservative and a subordinate left bloc. These two blocs were able to cooperate in what Boschetti (2007) calls the Swiss variant of the “historical compromise” between the Swiss left and right-wing parties. On the one hand, the PRD, PDC and Agrarian parties were willing to cooperate with the Swiss Socialist Party and developed social security to a certain extent. In 1948, the establishment of the Administration of Old Age and Survivors’ Insurance (AHV), financed on a pas-as-you-go basis, marked the beginning of a slow but historical expansion of the welfare state which accelerated and took its final form in the 80s. It was at this moment that the Swiss pension system, the so-called “three-pillar” system, and of which the AHV is the first pillar, came into being. In 1960, the first pillar was reinforced by a disability insurance (DI).

On the other hand, the Swiss Socialist Party abandoned its anti-capitalist stances and became a moderate and social-democrat reformist party aimed at promoting the creation of a Swiss welfare state, increase in real wage and promote the public sector and employment protection (Boschetti 2007). However, this compromise should not be overestimated, as the liberal conservative bloc remained largely dominant, this compromise corresponded more to a “asymmetrical class compromise” (Kergomard 2022, 3) between the two blocs.

But this asymmetrical compromise is also the consequence of an increasingly moderate Socialist Party, outflanked on its left by more economically ambitious parties such as the Swiss Party of Labour. The 1972 referendum on the popular initiative *For a Real People’s Pensions* is in that respect very illustrative. This referendum, launched by the Swiss Party of Labour, was an ambitious program aimed at largely expanding the AHV and DI, making the latter a sole and encompassing pillar of the Swiss pensions system. This referendum was opposed by all the government parties, including the Socialists. The initiative was largely refused by the Swiss citizen (78,6% of negative votes, with a participation rate of 52,93%) who then accepted the counter-initiative devised by the Socialist Federal Councillor Hans-Peter Tschudi which enshrined the three-pillar system in the constitution. This counter-initiative was however only implemented thirteen years later (in 1985) with the extension of the second pillar, the Mandatory Old-Age Occupational Provision. In the meantime, several revisions of the AHV increased the latter’s benefits and a mandatory unemployment insurance was introduced in 1976, under the pressure of the Oil Crisis<sup>6</sup>.

Since the break-up of the post-war Keynesian “historical compromise” between the traditional Swiss left and right-wing parties during the so-called “decade of all dangers” of the 90s (Boschetti 2007), the liberal conservative and left blocs are undergoing important transformations, that some authors interpreted as various forms of latent political crises. The Swiss political scene is still marked by the rise of the Swiss People’s Party (UDC), one of the most successful and early far-right populist parties in Europe, and the Greens. The electoral success

---

<sup>6</sup>Bonvin et al. (2015), for further information on the history of social security in Switzerland, see the History of Swiss Social Security website: <https://www.historyofsocialsecurity.ch/home>.

of the UDC is often associated with the destabilization of the liberal conservative bloc, which entered during the 90s into a phase of “cacophonous” crisis (Meuwly 2008) which still persists in the early 2020s. The 90s thus represent an important period for the analysis of the Swiss social blocs.

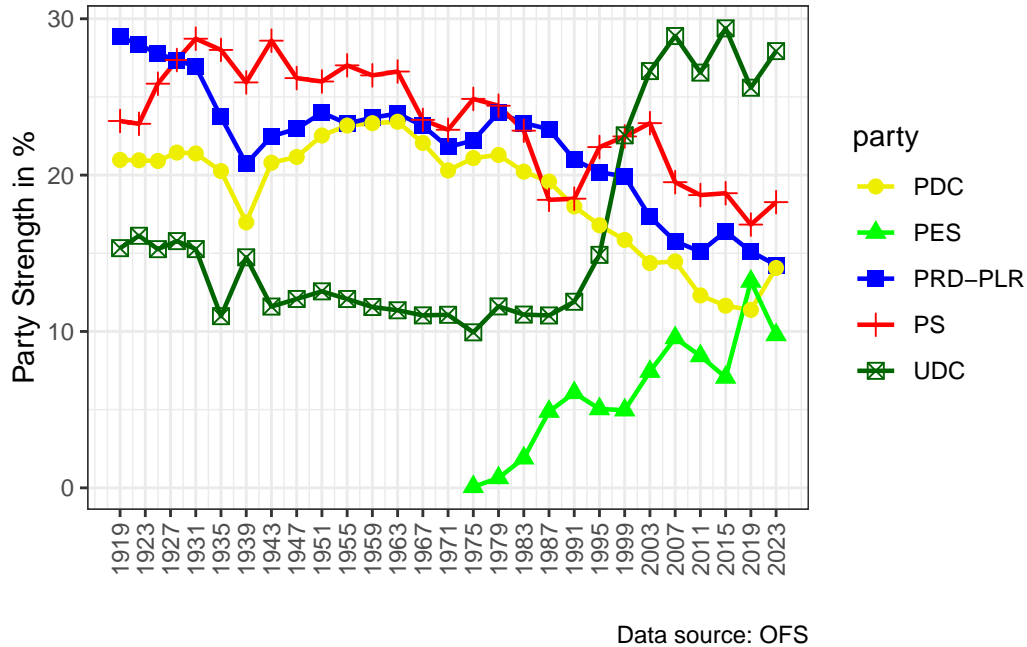


Figure 2.6: Party Strength: 1918-2019

In fact, all the Swiss traditional main government parties, the Swiss Socialist Party (PS) The Radical-Liberals (PRD-PLR) and the PDC, are in decline since the post-war period (see Figure 2.6), except for the Agrarian Party, which became the UDC in 1971. On the right, the crisis can be seen through the fall in vote shares (apart from the UDC); and the increase in party merges and re-configurations. In 2008, the Bourgeois Democratic Party (PBD) was created after a scission from the UDC. One year later, the Radicals, who created the Swiss modern state in 1848 and dominated Swiss politics until the first half of the 20th century, merged with the Liberals to create the PLR. The PBD, whose creation disturbed the composition of a reputed unchangeable federal council, then merged with the PDC to create *Le Centre* (“The Center”) in 2021. The federal election of 2023 led to major historical change for the Swiss right. The PLR, very far from its former hegemonic domination of Swiss politics, is now in the fourth place in terms of low chamber parliamentary seats.

But the most important transformation in the Swiss political landscape is, of course, the rise of the Swiss People’s Party (UDC). The UDC was historically the country’s fourth largest party and the smallest party to be part of the Swiss government. Its origins dates back to the emergence of various Agrarian parties after the first World War, with the largest ones

being founded in Bern in 1918 and Zurich in 1917. Rudolf Minger, the leader of the Bernese Agrarian Party, entered the Federal Council in 1929, and a national Agrarian Party was eventually founded later in 1937. The purpose of the Agrarian Party was the representation and defense of farmers and artisans' interests (Skenderovic 2017).

However, the decline of the primary sector during the post-war period implied a reduction of the electoral base of the Agrarian Party, and the latter saw its shares gradually decline starting from the 1951 election. The Agrarian Party was not resigned to the challenge posed by structural change, and attempted a "opening up to the center" strategy aimed at attracting parts of the emerging middle classes. In 1971, a merger with two democratic parties from the canton of Glaris and Grison led to the foundation of the Swiss People's Party of Switzerland, the party that we know nowadays. Seven years later, this party centered its program around new themes such as human rights, ecology and consumer protection. This strategy was a failure, as seen by the ongoing stagnation in terms of vote shares during the 70s and 80s. It was during the 90s that the party finally adopted a successful strategy, centered around an anti-immigration and anti-European integration program. In that matter, the rejection by Swiss citizen of the adhesion to the European Economic Area in 1992 certainly marked the beginning of UDC's fortunes, as the latter benefited greatly from its opposition to European integration (Skenderovic 2017). Alongside the UDC, the Socialist Party also was relatively successful during the 90s. Despite a long-run tendency of falling vote shares during federal elections, the PS saw its vote shares increase from 1991 to 2003.

The crisis of the 90s thus marked an important turning point in the history and evolution of the Swiss social blocs described in Table 2.1. Analyzing post-electoral survey data for 1999 can thus offer an insightful perspective on the social bases underpinning the political and institutional transformations which happened during and after the 90s. Furthermore, the year 1999 was a turning-point in Swiss politics. For the first time in Swiss history, the UDC became the first party in terms of vote shares (22,6%), to the detriment of the PRD which fell to the third place, something which until then never happened since the creation of the Federal state in 1848.

#### **2.3.2.1.1 The contradictions of the liberal conservative bloc**

The stability of the liberal conservative bloc was based on internal compromises between its socio-political groups which shattered under the pressure of structural and external pressures. In particular, the demands of the large export-oriented industries and sectors producing essentially for the internal market converged in terms of labor market flexibility, low employment protection and weak welfare state, but they differed in terms of commercial and industrial policies. In fact, the dualist structure of the Swiss economy, split between a protected sector producing for the domestic market and a competitive and export-oriented sector, implied some important contradictory policy demands within the bloc. This internal cleavage was reflected in the structure of the Swiss business interests associations, divided between those (like the *Vorort*) defending the large export-oriented industries and thus asked for liberal, free-trade

commercial policies and those (mainly the USP and USAM) defending the farmers, medium and small firms, and small business owners producing for the domestic Swiss market who asked for protection and subsidies. Thanks to a high degree of coordination and cohesiveness between Swiss elites and business associations, compromises were established to partially reconcile these contradictory demands and, as a result, reinforced the dual structure of the Swiss economy which combined a highly liberalized and free-trade exporting sector with a subsidized and highly protected internal sector ([Mach and Eichenberger 2011](#)).

However, as globalization, financialization and European integration intensified in the late 20th, the social groups attached to the interests of the internationalized Swiss industries gradually called into question the long-established compromises with the groups attached to the domestic-oriented sectors. This rupture was made explicit by the publication of a series of “white books” by political and economic actors defending the interests of the Swiss multinational and financial corporations, as well as their ambition to search for a new Swiss model founded on competition, individual responsibility and sound public finance. The publication of several neoliberal reports in the 90s was first encouraged by the Federal Council’s explicit request for a clear perspective on the reforms needed to face a potential integration to the European Economic Area (EEA). In 1990, Hauser Heinz, economist at the university of St-Gallen and member of the Commission For Economic Research, was asked to study the economic implications of an adhesion to the EEA. Strongly influenced by neoclassic theory, the report published by Heinz suggested that the structural reforms required under EEA membership would be beneficial to Switzerland’s economic growth ([Mattei 1995](#)).

In addition to Hauser’s report, Jean-Pascal Delamuraz, Radical member of the Federal Council, asked a group of economists and businessmen to provide for clear reforms to fight against the crisis. This group, led by David de Pury, was constituted by neoliberal economists from Swiss universities, public administrations, and business managers from banks and multinational corporations, who developed a neoliberal discourse advocating the transformation of Swiss coordinated capitalism into a new neoliberal model.

The reforms advocated by this first white book ([Leutwiler et al. 1991](#)) touched upon major institutional areas: the labour market, the product market, taxation, and the education system. The most ambitious reforms were unambiguously directed towards the liberalization of domestic markets and public sectors: the authors asked for the liberalization and privatization of the telecommunication, energy and transport industries. Reforms regarding the education system were, for instance, the abolition of civil servant status for teachers at the Federal Institutes of Technology; restrictions to the access to university based on qualifications and the creation of higher specialized schools to reinforce vocational training. Reforms of the labour market should reinforce the regularization of seasonal and foreign workforce; induce more labour flexibility through loosened labour laws by, for example, authorizing night work for women. The reform of the taxation system should provide an opportunity to reduce taxation on businesses to increase competitiveness. But most importantly, the main structural reform advocated by the first white book was the introduction of active anti-cartel and pro-competition regulations,

as domestic markets were considered to be negatively affected by cartels, rigidities and subsidies, all of these factors being responsible of distorted and un-competitive prices as well as for the lack of productivity gains (Leutwiler et al. 1991).

As explained in the introduction, a “revitalization” program was undertaken by the federal state soon after the publication of this first white book and parts of the latter’s program were implemented, notably through the revision of the cartel act and the law on the internal market in 1995. Another important reform was made during the renewal of the financial regime in 1994. In 1993, the introduction of a value-added tax (VAT) was finally accepted by the population after three failed attempts (in 1977, 1979 and 1991). The VAT replaced the sales tax (ICHA), which was essentially a tax on investment goods and considered as detrimental to the competitiveness of the Swiss economy. In the official explanatory brochure, the Federal Council argued that the introduction of the VAT was “an essential contribution to the regeneration of our economy” and that abolishing the ICHA “reduces the burden on our economy by some 2.6 billion francs”. Of course, the Federal Council was aware that “the reduction of burdens on the economy, coupled with an increase in those on consumers, was deemed shocking” but argued in response that “consumers and employees are also interested in maintaining our economy’s international competitiveness”<sup>7</sup>.

Whereas the first White Paper generated little interest and debate in the Swiss public, the second one, published in 1995, became far more controversial. While recognizing the progress of the reforms undertaken by the revitalization program, the report recommended a stronger pursuit of the reforms: more restrictive social security policy focusing on individual responsibility and reintegration into the labor market; reduction in public spending and public debt; and the reinforcement of competition and liberalization policies (Hauser et al. 1996). Those recommended measures were implemented in the second half of the 1990s: the unemployment insurance was revised in 1995 to include “activation” measures and regional employment offices were created. The neoliberal reforms certainly culminated in 2003, with the enshrinement of the debt-brake principle in the constitution. Overall, these white books aimed at transforming the Swiss model of organized capitalism into a neoliberal model. The traditional Swiss model of coordinated capitalism was considered outmoded and ill-adapted to globalization and financialization: were the reforms of the white books not adopted, the Swiss economy ran the risk of losing its privileged lead. The authors of the white books, especially David de Pury, were also highly supportive of Switzerland’s membership to European Union. Europe integration was seen as “a fortuitous opportunity for Switzerland to dismantle its structural rigidities”(Holzen 1991) and to avoid that “Switzerland becomes a cartel in the middle of Europe”(Krill and Brandt 1992). The vision of European integration as a tool to promote neoliberal reforms was not shared at all by the UDC and Christophe Blocher, who, unlike De Pury, considered that European integration was a threat to the implementation of structural reforms in Switzerland(Zeller, Häberlin, and Schoch 1992).

#### **2.3.2.1.2 The contradictions of the left bloc**

---

<sup>7</sup>*Votation Populaire Du 28 Novembre 1993. Explications Du Conseil Fédéral (1993)*, p.6-9, author’s translation

In contrast with the PRD and the PDC, the 90s were beneficial for the Swiss Socialist Party, whose decline appears more clearly in the long-run. The party saw its shares rise in all federal elections that took place in that decade, before plunging again in 2003. Within the Socialist Party, the electoral rebound of the 90s was interpreted as resulting from a successful conciliation between the consolidation of the traditional social basis of the party, trade unions and working classes, and the incorporation of the new middle classes and social groups emerging from the new social movements, namely, feminists, ecologists, anti-militarists and pro-EU integration supporters. As one Socialist deputy from that period, Jean-Claude Rennwald, puts it:

“In other words, our societies, but also the Socialists, have progressively favored freedom over equality. To a large extent, this also applies to the Swiss Socialists. In concrete terms, the Swiss SP, like most Western SPs, is obliged to take account of the transformation of the class structure of our society, and must pursue a policy that synthesizes the interests of the new middle class with those of the working class”(J.-C. Rennwald 1998, 227, author’s translation)

But this strategy comes with the risk of losing the support of the traditional base, as the temptation to expand to new social groups more favorable to liberalism and post-materialist issues is electorally attractive:

“In the recent past, the Socialist Party has often neglected the interests of the working class, thereby undermining the left-wing value of equality. Of course, the objective of freedom is more easily asserted today, because it can rely on a broader electoral base. The excluded are in fact in the minority, and therefore do not represent an interesting electoral mass.”(J.-C. Rennwald 1998, 227, author’s translation)

The challenge for the Swiss Socialists was hence to reconcile and consolidate this broad alliance. As the regression analysis conducted in the previous section and other studies have shown, this cross-class coalition was not stable, as higher education groups and socio-cultural specialists progressively replaced popular groups as the main social base of the party. This brings the question of why the Socialist Party was not able to keep its traditional support among popular groups, which moved towards the UDC or to abstention. One widespread explanation appears in the quotation above: in Switzerland, the working class is a minority due to several factors, one of the most important one being the fact that a large proportion of the working class is foreign and therefore ineligible to vote. Two structural transformations have here a combined negative effect on the attractiveness of the working class for the Swiss Left.

On the one hand, the relative share of the secondary sector gradually declined since the second World War. On the other hand, as the relative share of the secondary sector shrank, the relative share of foreign workers within the sector tended to rise. The Swiss Socialists had thus more incentive to search for new social bases. L. Rennwald and Evans (2014) complements this



common explanation with to other factors: party competition and the influence of pro-new issues activists. Compared to Social Democratic parties in other countries, Austria for instance, the Swiss SP put much more emphasis on New Left issues due to an arrival of New Left activists in the party during the 80s. The pressure to adopt a New Left strategy was moreover reinforced by the threat of the emerging Green Party, which became the main competitor of the Swiss Socialist Party.

The latent class analysis performed below will allow to explore into detail the transformations described above, and also test their empirical validity using a innovative and detailed approach. By taking into account the multi-dimensionality of social conflict and political cleavages, this approach allows to endogenously define socio-political groups from a set of indicator variables related to policy preferences, issue positions and social cleavages.

### 2.3.2.2 Choice of the active indicator variables

Regarding the choice of the variables that will define the different Swiss socio-political groups in the 90s, the Swiss post-electoral study of 1999 (Hardmeier et al. 2022) has the advantage of having enough observation (3258 records) and containing issue position variables with good enough qualities to infer socio-political groups quiet fairly. The ideal data set would be the one containing issue position variables which cover a good range of institutional areas, such as the one considered in Amable (2003): products market, social protection, labour market, the financial system and the education system along with general policy orientations (Amable 2021). Although the Swiss post-electoral study of 1999 is the most relevant for the present research, it is still limited by the questions available.

Nine questions were considered relevant to be taken as indicators. Of the nine questions, three concern economic policy. One question asked the respondent whether they were in favor of increasing or reducing social spending by the confederation, the second one whether taxes on high income should be increased or decreased, and the third one whether the respondent was in favor of more state intervention of for free market. Overall, 66,7% of the sample supported an increase in taxes on high income while 39,4% supported an increase in social spending by the federal state (with 31,8% in favor of cutting expenditures, see Figure 4.7 in the appendix to see descriptive statistics of all the indicator variables).

One interesting question is about the role of the Swiss army. The question asked the respondents whether they preferred a strong army or no army at all. This question is relevant regarding the historical context since the 90s represented a turbulent period for the Swiss army. Switzerland is known for its militia-based army and remains one of the few Western countries to retain this system. Moreover, anti-army activists are an emblematic example of the New Left activists who emerged in the 80s within the Swiss Left. In 1986, the *Group for a Switzerland without an army* launched a popular initiative called *For a Switzerland Without an Army and an Overall Peaceful Political Stance* which, three years later, unexpectedly gathered 35.5% positive votes with a majority of yes in two cantons: Jura (55.5%) and Geneva (50.4%).

These stunning results (no one would have expected such a high share of yes) greatly disturbed the government and the Swiss army, and the latter underwent a process of important reforms thereafter. Despite the rejection of this initiative, the debate over the role and the future of the Swiss army was still very heated in the late 90s and still frequently comes up in public debates nowadays<sup>8</sup>. Descriptive statistics suggest that the share of no army supporters remained rather stable since the ballot, with 35% of the sample being in favor of a Switzerland without an army (with 45% being in favor of a strong army, see Figure 4.7 in the appendix).

Another question is about European integration. In surely one of the most important and disputed referendum in Swiss history, Swiss citizen rejected their country's adhesion to the European Economic Area in 1992 by a very short majority of 50,3% (the majority between cantons was far less close, with only 6 cantons in favor out of 26, the referendum requiring the double majority of the voters and the cantons to be accepted). As in other European countries, European integration became an important cleavage which destabilized both the liberal conservative and left blocs. In the former, the UDC was the only major party to oppose the adhesion, while, in the latter, the Swiss Socialist Party and labor unions were strongly in favor, with the exception of the Greens, which then quickly adopted a pro-EU position. This party was however divided over this issue, with a cleavage between the German-speaking cantons which strongly opposed the adhesion while the French-speaking cantons were in favor. The attitude towards European integration was included to assess the extent to which Switzerland displays a similar pattern than France in terms of European integration cleavage and the break-up of the traditional social blocs.

European integration revived a strong regional-linguistic cleavage. Romandy's voters supported the adhesion with a large majority (75%) whereas the Swiss-German and Swiss-Italian citizen voted against (respectively 56% and 61.5% of negative votes). Within each region and canton, a urban-rural cleavage also divided the supporters of the adhesion to the EEC, who were mainly urban citizen, against opponents who were more likely to live in rural areas. Social groups in favor of European integration are thus expected to contain above-average representation of French-speaking Swiss citizen living in urban areas (Schwok 1993). The factors behind this linguistic-regional cleavage over European integration are manifold.

First, the attachment of the Swiss French to European integration can be explained by their subordinate position vis-à-vis Swiss Germans, who largely hold the political power in the country. The Swiss French thus tend to be more skeptical about Swiss sovereignty and feel that they do not really have an influence over their country's future. In their perspective, European integration is, as Schwok puts it a way to "play Brussels against Bern" and can be perceived as "a way out of the ghetto" (Schwok 1993, 99). Second, Swiss Germans are keen to differentiate themselves from Germany, the gap between Swiss Germans and Germans being much wider than that between France and Romandy. Third, Ticinesi feared the economic and cultural consequences of European integration, in addition to being repulsed by the Italian crisis of 1992 (Schwok 1993).

---

<sup>8</sup>For a short history and overview of the current challenges and of the role of the Swiss army, see Juillard (2012).

Moreover, as underlined by Amable and Palombarini (2018) and Amable (2017), European integration played an important role in the break-up of the traditional left and right blocs in France. The popular groups of the two blocs tended to oppose European integration while the most skilled and wealthiest elements were united around the pursuit of EU integration, which is one of the main policy demands of the bloc bourgeois, along with neoliberal reforms and progressive “cultural attitude”. In the sample, 56,7% of the respondents were in favor of European integration and only 33,85 were against, suggesting a large discrepancy with the ballot of 1992. When conducting a simple logistic model regressing support for EU integration on income and education, support for EU integration shows a positive association with both income and education levels (see Figure 4.7 and Table 4.6 in the appendix).

Two questions are about environmental issues. One of them was a trade-off question which asked whether the respondent was in favor of environmental protection or economic growth. The other one asked whether the respondent was in favor or against nuclear energy. Overall, respondents rather supported environment protection (53,1%), with a minority supporting economic growth (17,3%). 67% of the sample was against nuclear energy.

The two last questions concern “cultural” issues: attitude towards Swiss traditions and foreigners. The former asked the respondents whether they preferred Swiss traditions or modernity. The latter asked the respondents whether they were in favor of unequal rights between Swiss citizen and foreigners and better chances for the Swiss or equal rights and chances. Switzerland stands out for its high proportion of foreigners who have less rights than Swiss citizen. During the post-war period, Switzerland became a country of immigration due to high sustained growth and labor shortages. Immigrants were mainly seasonal workers on temporary residence permits, with no right to family reunification and no voting rights. They were expelled as soon as their labor force was no longer needed. It is often said that, in this way, Switzerland maintain full employment by exporting its unemployed foreign labor force. As soon as the Swiss economy overheated in the late 60s, restrictive immigration policies were adopted, while certain rights for foreign residents were improved, under pressure from negotiations with neighboring countries (Piguet 2013). Including these two cultural issue positions variables are important to situate the socio-political groups on the so-called “cultural” cleavage, which may be important to assess the transformations of the traditional Swiss social blocs. In the sample, a majority supported the defense of Swiss traditions (59,4%) whereas 42,6% thought that Swiss citizen should have more rights and chances than foreigners (46,54% being in favor of equal rights and chances).

### **2.3.2.3 Description of the 12 clusters model**

A series of models were thus estimated, increasing the number of clusters by one until the bootstrap likelihood ratio test indicated a lack of significance of adding a supplementary cluster to the model. By following this approach, the 12 cluster model described below was selected.

Table 2.4: Cluster description

Cluster	Weight	Policy preferences	Characteristics
1	17,8%	For increase in taxes on high income (HI) and in social spending, but supports free markets; no clear opinion on Swiss army; rather pro-EU integration; but with an appreciable minority of; anti-EU supporters (40%); for equal chances Swiss-foreigners; defend traditions; pro-environment; against nuclear energy.	Rather middle-aged and old; female; low income; middle education; skilled and unskilled workers; Protestants; middle/small city ;German and Italian-speaking.
2	13,7%	For increase in social spending; for higher taxes HI; for state intervention; for no Swiss army; strongly pro-EU integration; for equal chances Swiss-CH; question traditions; pro-environment; against nuclear energy.	Young; female; high income; high education; managers, socio-cultural specialists; French-speaking; big city; Catholics and Atheists.
3	13,4%	Against social spending; for increase in taxes on HI; free-market but with an appreciable minority (40%) in favor of state intervention; for a strong Swiss army; against EU integration; for better chances for the Swiss; defend traditions; pro-environment; against nuclear energy.	Rather old; female; low income; low and middle education; unskilled workers; craft specialists; self-employed; Protestants; German and Italian-speaking; countryside; middle/small city
4	12,4%	For increase in social spending; for increase in taxes on HI; rather free-market; divided over Swiss army; pro-EU integration; for equal chances Swiss-foreigners; pro-environment; against nuclear energy.	Young; female;middle-high income and education; skilled workers and managers; German and French-speaking; Catholics or no religion; big city.
5	7,1%	Against social spending; for increase in taxes on HI; for free markets; for strong army; against EU-integration; for better chances for the Swiss; defend traditions; divided over environment vs growth; pro-nuclear energy.	Rather old; retired; male; middle-low income and education; Protestant; German speaking; farmers, craft specialists, skilled and unskilled workers; countryside, middle/small city.
6	6,9%	Pro-EU integration; for equal chances Swiss-foreigners; rather defend traditions; pro-nuclear energy.	Old; high income; high education; vocational training; managers; skilled employees; retired; German-speaking; big city.
7	6,9%	For higher taxes on HI; for strong army; pro-EU integration; for equal chances Swiss-foreigners; defend traditions; against nuclear energy.	Old; retired; low income; low education; Protestant; craft specialists; skilled and unskilled employees; managers; German-speaking; countryside, middle/small city.
8	5,9%	For increase in social spending; for higher taxes on HI; for no army; pro-EU integration; for equal chances Swiss-foreigners; question traditions; pro-environment; against nuclear energy.	Rather young; female; high income; high education; skilled workers; managers; socio-cultural specialists; German and French-speaking; big city.
9	4,9%	For reducing taxes on HI; for reducing social spending; strongly for free-markets; for strong army; against EU-integration; rather for better chances for the Swiss; defend traditions; divided on environment vs growth; pro-nuclear energy.	Old; retired; male; high income; rather high education; Protestant; self-employed; German speaking; countryside, middle/small city
10	4,9%	For reducing social spending; for reducing taxes on HI; strongly for free markets; for a strong army, but with an appreciable minority of no army supporters (37%); for EU-integration; for equal chances Swiss-foreigners; question traditions; rather for economic growth; pro-nuclear energy.	Young; male; high income; high education; managers; skilled workers; self employed; German-speaking; big city.
11	3,3%	Against EU-integration; for better chances for the Swiss; defend traditions; pro-environment; against nuclear energy.	Old; female; low income; middle-education; skilled and unskilled workers; Protestant
12	2,6%	For increase in social spending; for increase in taxes on HI; Undecided or in favor of state intervention; undecided on EU integration; rather for no army; for better chances for the Swiss; defend traditions; pro-environment; against nuclear energy.	Rather old; female; low income; low education; unskilled workers; socio-cultural specialists.

Table 2.4 gives a description of each cluster's relative weight, policy preferences and overall socio-economic characteristics<sup>9</sup>. The largest cluster (cluster 1) represents 17.8% of the total sample. This cluster shows ambivalent policy preferences, but can be said have rather center-left preferences since it supports increase in social spending by the Confederation and also in taxes on high income, but remains supportive of free markets rather than state intervention. Cluster 1 is, in majority, in favor of European integration, but with an appreciable minority (around 40%) which is against. This cluster support equal rights and chances between Swiss citizen and foreigner, but is attached to traditions. Finally, it prefers environment protection over growth and is strongly against nuclear energy.

Cluster 2, the second largest group (13,7%) supports increase in social spending, higher taxes on high income and, conversely to cluster 1, supports more state intervention (it is actually the only cluster that strongly supports state intervention). It is also very much in favor of equal rights and opportunities for foreigners, questioning Swiss traditions, and is also pro-environment and against nuclear energy. Interestingly, cluster 2 contains an important share of no army supporters (88% of the cluster). Cluster 8 is the only cluster which, like cluster 2, is strongly in favor of a Switzerland without an army. Cluster 8 has almost the same preferences as cluster 2, the only slight differences being a lesser support for state intervention and an undecided position vis-à-vis the environment vs growth trade-off. Cluster 4 is also close to clusters 2 and 8, but is more in favor of a strong army and free markets.

Cluster 3 is similar to cluster 1 regarding higher taxes, but has a higher proportion of members in favor of state intervention, and differs in its preference for cutting social spending, for being more in favor of a strong army and is more skeptical about EU integration. It differs from cluster 1 by being also against foreigners' equal rights and chances. Cluster 5 members are rather similar to cluster 3, but they are more divided over environmental issues and they strongly support nuclear energy.

Cluster 6 has no clear opinion on social spending, rather supports higher taxes but not state intervention. It supports EU integration, equal chances and rights for foreigners and rather wants to defend traditions. It has no preferences between environment vs economic growth, but is supportive of nuclear energy. Cluster 7 supports higher taxes on high income, is rather for free markets, supports a strong army, the defense of traditions, better chances and rights for the Swiss and wants to stay out of the EU.

Cluster 9 and 10 broadly support neoliberal economic policies (lower taxes high income, cut social spending, for free markets). However, cluster 9 is more in favor of a strong Swiss army, against EU integration and equal rights and chances for foreigners. It also supports nuclear energy.

Cluster 11 expresses no clear preferences, except for EU integration (stay out), attitude towards foreigners (better chances for the Swiss) and taxes on high income (rather in favor, but

---

<sup>9</sup>The full results of the 12 clusters model can be consulted [here](https://jeylal.github.io/selects1999results/) (https://jeylal.github.io/selects1999results/)

also strongly undecided). Like cluster 2, cluster 12 supports left-wing economic policies, environment protection and is also rather against the army. However, this cluster prefers better chances for the Swiss and to defend traditions.

The socio-economic characteristics for each group can be precised by taking into account variables that have not been considered as active indicators, but can define some general characteristics within each cluster by comparing the proportions within the clusters with the overall proportion of the sample.

Cluster 1 members are older than average. This cluster has an over-representation of women, middle-low income groups<sup>10</sup>, and of low to medium levels of education. Cluster 2 is the youngest (on average seven years old younger than the total average). It also has a strong proportion of female (59% percent compared to an overall proportion of 54%) and of high income groups. University graduates are over-represented in cluster 2, with a proportion of 24% compared to an overall proportion of 11%. Cluster 2 is predominantly French-speaking, with a proportion of 48% (compared to an overall proportion of 28,6%), non religious and urban.

Cluster 3 is composed of female, low income groups, vocational training and compulsory school graduates. The wealthiest clusters in terms of income are (in descending order) cluster 10, 9, 8, 2 and 6. Cluster 10 is especially wealthy and well educated, with 33,8% of its member belonging to the highest income group (overall proportion of this income bracket is 16,8%) and a high representation of university and higher vocational training graduates. Cluster 9 is also wealthy is well educated, but less than cluster 10. Clusters 9 and 10 also have strong proportion of males and self-employed. The poorest clusters are cluster 3, 7, and 12. Farmers and skilled workers and retired people are strongly represented in cluster 7.

#### 2.3.2.4 Aggregation into social blocs

The political identification of each cluster can be assessed by regressing cluster membership on left-right self-identification recoded into 4 categories; left (0 to 2), center-left (3 and 4), center (5), center-right (6 and 7) and right (8 to 10). To do so, the so-called three-step approach is used (Jeroen K. Vermunt 2017). After clusters are defined (step one), cluster membership posterior probabilities are assigned to every observations (second step). Then, cluster membership can be regressed on a set of independent variables (third step).

The results are presented in Table 2.5 and can be resumed as follows: clusters 2, 8 and 12 lean to the left; clusters 1 and 4 to the center-left; cluster 10 to the center-right and clusters 3, 5, 7 and 9 to the right.

Cluster 2 can be said to constitute the core of the left bloc: its members have strong left-wing preferences regarding all issue positions, which broadly correspond to the program of the Swiss Socialist Party during the 90s. Cluster 8 could also easily fit into the left bloc since it only differs from cluster 2 by its less pronounced support for environment protection (although

---

<sup>10</sup>The income variable considered here is the gross monthly income of the household.

Table 2.5: Influence of political leaning on cluster membership. Z-values under the coefficients.

Cluster	left	center-left	center	center-right	right	None
Cluster1	-0.03	0.48	0.22	-0.25	<b>-0.7</b>	0.26
	-0.06	1.50	1.37	-1.15	-2.1	1.18
Cluster2	<b>3.12</b>	<b>1.91</b>	<b>-0.76</b>	<b>-1.64</b>	<b>-2.4</b>	-0.28
	9.16	5.33	-2.35	-2.98	-2.3	-0.76
Cluster3	0.26	-0.76	-0.10	-0.17	<b>0.4</b>	0.32
	0.76	-1.81	-0.63	-0.86	2.2	1.56
Cluster4	0.33	<b>0.83</b>	0.25	-0.21	-0.7	-0.51
	0.72	2.50	1.40	-0.88	-1.9	-1.60
Cluster5	-0.14	-2.04	0.29	<b>1.31</b>	<b>1.6</b>	-0.98
	-0.17	-1.21	0.65	3.02	3.5	-1.00
Cluster6	0.26	0.59	<b>-0.40</b>	0.09	-0.5	-0.05
	0.64	1.76	-2.03	0.39	-1.5	-0.16
Cluster7	-1.69	-1.02	0.40	0.53	<b>0.9</b>	<b>0.85</b>
	-1.01	-1.19	1.00	1.29	2.2	1.97
Cluster8	<b>2.21</b>	<b>1.85</b>	-0.08	<b>-1.80</b>	-1.9	-0.27
	5.47	4.57	-0.24	-2.06	-1.8	-0.54
Cluster9	<b>-2.89</b>	-2.06	<b>0.20</b>	<b>1.74</b>	<b>2.5</b>	0.53
	-3.40	-0.97	0.36	3.52	5.1	0.83
Cluster10	-1.83	-0.55	0.44	<b>1.39</b>	<b>1.3</b>	-0.73
	-1.09	-0.62	1.02	3.28	2.9	-0.99
Cluster11	-0.53	0.06	0.18	-0.01	0.2	0.15
	-0.66	0.14	0.71	-0.04	0.4	0.38
Cluster12	<b>0.92</b>	0.70	-0.64	-0.96	-0.7	<b>0.70</b>
	2.12	1.74	-1.92	-1.81	-1.2	2.23

it is still against nuclear energy). The members of these two clusters tend to be wealthy and well-educated. They also belong to high income groups.

The left could also include cluster 12, which has however a dissenting position vis-à-vis EU integration and cultural issues (more conservative). Unlike clusters 2 and 8, cluster 12 is constituted by more popular groups with low education and income levels. All these three clusters combined, the left bloc constitutes 22.3% of the sample. An extended left bloc could attract parts of cluster 1 (17.8%) and 4 (12.36%), which support social expenditure, taxes on high income, environment protection and EU integration, but are more in favor of free markets and of defending traditions.

A strategy centered around a bloc bourgeois could start from cluster 10 since it is the only cluster being strongly in favor of neoliberal policies, European integration, and which has broad “culturally progressive” preferences while being socially composed by the highest income and education groups. This cluster is however rather limited in size (4.9%) and isolated from the other right-wing clusters regarding EU integration and other policy dimensions. This cluster is, in terms of policy preferences, the closest to the neoliberal project advocated by the white books. Cluster 9 is the core of the conservative branch within the liberal conservatives: it is in favor of neoliberal policies while being against EU integration and equal rights and chances for foreigners, and strongly for defending traditions. Its preferences are close to clusters 3 and 5 and these three clusters could easily be aggregated into a neoliberal and conservative bloc that would represent 25.7% of the sample. This bloc could also include cluster 7 (7%), which is however more divided over neoliberal policies (it is for instance strongly in favor of increasing taxes on high income).

To what extent are the relationships between cluster membership and political leaning similar to the relationships between cluster membership and party support? Table 2.6 presents the results of another step 3 approach regressing cluster membership on the degree of sympathy (measured on a 0-10 scale) for each main Swiss party and the Greens.

As expected, cluster 2 shows a lot of sympathy for the Socialist Party and for the Greens. The other clusters that show significant support for these parties are cluster 8 and 12. Cluster 4 only shows sympathy for the Socialists. Cluster 6 shows sympathy for the Socialists, but also for the Christian democrats. The groups fully supporting the UDC are clusters 3, 7 and 11 (23.95% in total). Clusters 5 (7.12%) and 9 (4.91%) show sympathy for both the UDC and PRD, while cluster 10 (4.9%) is the only cluster fully supporting the PRD.

### **2.3.2.5 Discussion of the results**

The results of the LCA analysis using post-election survey data for 1999 shows how the left and liberal conservative blocs recomposed during the 90s. The left bloc seemed less destabilized than the liberal conservative bloc. The former, which includes clusters 2, 8 and 12 (22.31%) had mainly one strategy to extend the bloc by including other socio-political groups. In effect, it could have tried to include more center or center-left groups like clusters 1 and 4, or



Table 2.6: Influence of the degree of sympathy for each party on cluster membership. Z-values under the coefficients.

Cluster	PRD	PDC	PS	UDC	Greens
Cluster1	-0.02	-0.098	0.08	-0.03	0.101
	-0.30	-1.550	1.75	-0.78	1.919
Cluster2	<b>-0.36</b>	<b>-0.118</b>	<b>0.32</b>	<b>-0.47</b>	<b>0.465</b>
	-8.67	-2.786	7.58	-10.40	11.576
Cluster3	-0.05	-0.054	-0.07	<b>0.22</b>	<b>-0.151</b>
	-0.93	-0.791	-1.44	6.61	-2.583
Cluster4	<b>-0.13</b>	0.036	<b>0.22</b>	<b>-0.13</b>	-0.037
	-2.67	0.790	5.30	-4.19	-0.861
Cluster5	<b>0.19</b>	0.126	<b>-0.19</b>	<b>0.34</b>	<b>-0.329</b>
	2.81	1.927	-3.67	6.14	-6.620
Cluster6	0.12	<b>0.095</b>	<b>0.12</b>	<b>-0.19</b>	-0.052
	1.75	2.196	2.05	-3.72	-1.260
Cluster7	0.05	-0.056	<b>-0.13</b>	<b>0.39</b>	<b>-0.285</b>
	0.91	-1.056	-2.32	6.49	-4.715
Cluster8	<b>-0.24</b>	-0.008	<b>0.30</b>	<b>-0.59</b>	<b>0.256</b>
	-5.12	-0.208	6.53	-10.47	6.343
Cluster9	<b>0.33</b>	0.035	<b>-0.43</b>	<b>0.40</b>	<b>-0.266</b>
	5.26	0.639	-7.06	6.65	-4.827
Cluster10	<b>0.43</b>	0.023	<b>-0.27</b>	<b>-0.04</b>	-0.005
	8.68	0.472	-4.66	-0.81	-0.077
Cluster11	0.07	-0.025	-0.06	<b>0.14</b>	-0.082
	1.29	-0.579	-1.05	2.38	-1.351
Cluster12	<b>-0.38</b>	0.043	0.13	-0.04	<b>0.382</b>
	-4.16	0.366	1.72	-0.81	4.449

even 6. Due to the greater size of cluster 1 and 4, the Swiss left (mostly the Swiss Socialist Party) had more incentive to dampen its economic program and focus on some of the New Left issues (equal rights and ecology and pro-EU integration) to attract parts of cluster 1 and 4. However, this strategy came with the risk of alienating cluster 12, which is more skeptical about EU integration and equal rights for foreigners while being strongly on the left economically-speaking.

This strategy would have corresponded to a Swiss variant of the “Third Way”, incarnated by Tony Blair’s Labour Party in the UK and Schröder’s SPD in Germany. In the years following the 1999 national elections, this strategy was attempted by certain members of the Socialist Party, most notably by Simonetta Sommaruga, who published in 2001 the *Gurten Manifesto, for a new and progressive SP policy*. This manifesto, co-authored with the political scientist Wolf Linder, the historian Tobias Kaestli and Henri Huber, was a clear call for a Third Way in Switzerland. However, whether the Swiss left truly endorsed Third Way politics is a matter of debate, some scholar emphasizing that the Swiss left endorsed relatively less the Third Way compared to other European countries (Oesch and Rennwald 2010, 347). The cluster analysis performed here shows why a Third Way strategy was feasible for the Left at least in the short-run, considering the diversity of socio-political groups’ preferences. This Third Way or New Left strategy would work based on a special focus the support for environment protection, equal rights for foreigners and European integration.

The strategy actually adopted by the Socialists can be assessed with data provided by the *Manifesto Project*, which allow to situate the position of political parties on various issue positions and cleavages.

Figure 2.7 shows the evolution of each Swiss main political party’s positions on the Manifesto Project’s index for several cleavages, the degree of economic planning, the size of the welfare state and European integration (with higher values indicating a higher support). Regarding economic planning, the Socialist Party seems to have indeed dampened its program throughout the 80s and 90s. Favorable mentions for European integration was very high, the Socialists being the most in favor of integration compared to the other government parties. For the position towards the welfare state, the support for the latter was decreasing during the period studied, before increasing strongly in the 2010s. This shows that the Swiss Socialist Party indeed tried to persist in a New Left and Third Way strategy before and a few years after 1999. The recent evolution of the party in the 2010s rather indicate that the party has abandoned or at least dampened this strategy. Overall, Figure 2.7 indicates that the Third Way strategy had a short term impact on the Socialist Party, due to the attractiveness of a strategy aimed at drawing more support from cluster 1 and 4. This, in return, had an impact on the social basis of the left bloc, which became more based on the aggregation of middle and wealthy classes: socio-cultural professionals, managers, university graduates and middle to high income groups (which are the social characteristics of cluster 1, 2, 4 and 8), while gradually losing its popular elements.

Compared to the left bloc, the liberal conservative bloc appears to be more divided. As underlined above, the groups the most supportive of a neoliberal program, cluster 9 and 10,

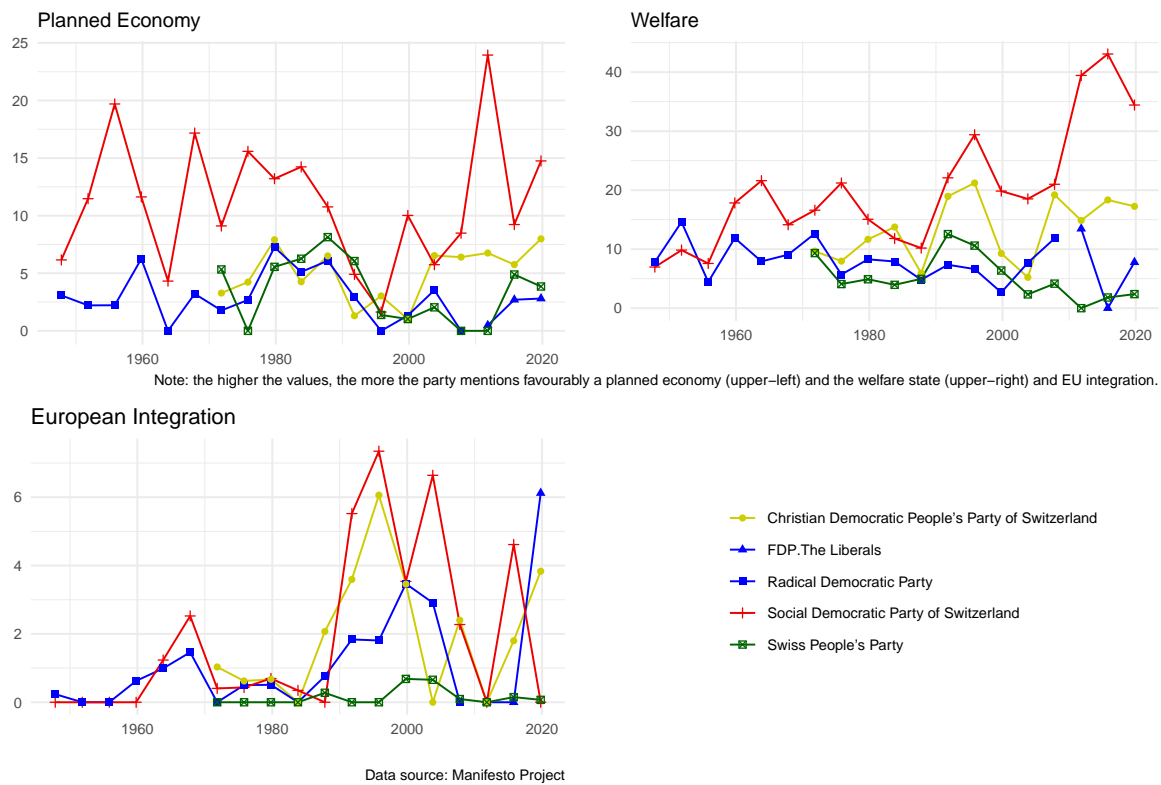


Figure 2.7: Positions of the Swiss main political parties on planned economy, the welfare state and on European integration.

are rather small. Together, they represent around 10% of the sample. Cluster 9 is constituted by old, wealthy and well educated individuals, with a strong over-representation of retired and self-employed whereas cluster 10 contains young, wealthy and well-educated individuals who are on average managers. However, these groups are divided over European integration, equal rights and traditions, cluster 9 being far more conservative on these issues and strongly anti-EU. The progressive and pro-EU stances of cluster 10 isolate the latter from the other clusters which lean to the right and either support the PRD and the UDC: clusters 3, 5, 7 and 9. All these clusters could be united around a culturally conservative and anti-EU strategy since they share common preferences on these issues. This was the strategy adopted by the UDC, while the neoliberal and pro-EU agenda defended by the PRD and PDC would encounter difficulties to gather the support of a sufficient social base. The limited size of the social basis supportive towards a bourgeois bloc strategy also explains why the white books were so badly received in the Swiss public opinion, and even among the PRD and PDC whose members thought that the program advocated by De Pury and coauthors was too radical. The press of the time underlined the malaise that the reports provoked among the Radicals split between those supportive towards the reports and those who criticized the program because of the lack of compromises with less affluent groups (Carera 1993; Crevoisier 1996). De Pury himself was aware that the bourgeois bloc strategy would fail because of the restricted size of its social basis. Despite some support in favour of his candidacy to replace Delamuraz' seat in the Federal Council in 1998, de Pury announced that he did not want to govern a country that he felt was incapable to change and declared: "I am in favour of profound changes in our country and, frankly, I don't see them coming in the short term" ("[David de Pury Ne Veut Pas Diriger Une Suisse Qu'il Sent Incapable de Changer](#)" 1998, author's translation).

To sum up, the crisis of the 90s did not result in the break-up of the dominant social bloc, but rather a shift in the balance of power within the bloc: the conservative branch, led by the UDC, taking over the (neo)liberal branch which used to dominate the bloc in the post-war period. This shift could explain why the neoliberal reforms, after a rapid implementation in the 80s and 90s, quickly came to a halt at least in their internationalist and pro-EU forms.

Regarding other the evolution of right-wing parties' political supply, Figure 2.7 suggests that the UDC strengthened its economic program along more neoliberal lines since the 80s. This reflects a contradiction between some of the socio-political groups gathered by the UDC (clusters 3 and 7 for instance), which are rather popular groups whose demands regarding taxation are far from the neoliberal agenda that the UDC hold since the 80s. Hence, the support gathered by the UDC rests on a fundamental contradiction and is stable to the extent in which the popular socio-political groups rank their anti-EU and conservative stances higher in their hierarchy of expectations than economic issues such as progressive taxation.

To sum up, the divisions within the liberal conservative clusters marked a shift in power balance within the bloc: the core of the bourgeois bloc carrying a pro-EU neoliberal strategy was very limited (5%) whereas the neoliberal, conservative and anti-EU clusters (3, 5, 7, 10) became a majority within the bloc. This shows that the political conditions for a neoliberal strategy based on the revitalization program and combined with a pro-EU and culturally progressive

agenda was not sustainable as its social base was not large enough. This could explain why Switzerland, under the leadership of the UDC, rapidly adopted some form of conservative neoliberalism.

### 3 Conclusion

The aim of this study was to explore the social foundations of the transformation of Swiss capitalism since the 1980s. The rationale was to show that the neoliberal transformation of the Swiss hybrid model had to be founded on a strategy of institutional change supported by a sufficiently broad social base.

The crisis of the 90s did not mark a break-up of the Swiss dominant social bloc, but rather a re-composition and a change in the power balance within the bloc itself. While the crisis did not destabilized the left bloc that much, the right bloc, that I named “liberal conservative” throughout this study, underwent important process of change.

In fact, the social bases of the political parties representing the liberal conservative bloc, the PRD-PLR, PDC and UDC, changed substantially since the 80s. Unlike Durrer de la Sota, Gethin, and Martinez-Toledano (2021), who showed that the social base of right-wing government parties stayed rather stable since the 70s, the results presented in the previous section show that, while the UDC’s social basis was rather merchant in the 80s, it transformed into a popular basis during the 90s. Furthermore, the social basis of the PRD (then PLR) used to be very bourgeois until the 2010s, period after which this social base showed trends towards an evolution into a merchant right. Interestingly, my results are more supportive of the brahmin left vs merchant right divide hypothesis than the WPID’s own results for Switzerland. However, if one looks at political leaning instead of party support, the left appears to be bourgeois in the sense that it is supported by the upper-middle income groups and by university graduates, while self-identification to the right evolved into a merchant right pattern.

Then, an analysis closer to the methods and conceptual framework of the neorealist approach was carried out through a latent class analysis for the late 1990s in order to assess more closely the re-composition of the left and liberal conservative blocs during the crisis. The estimated LCA model divides Swiss population of the late 90s in twelve socio-political groups. The twelve clusters model shows that the bourgeois basis that, mediated by the PRD, could support a neoliberal and pro-EU strategy was rather narrow (around 5% only). In fact, a strategy aggregating social groups which were opponents of EU integration, conservative vis-à-vis immigration and cultural issues would gather a broader base. This strategy was endorsed by the UDC, which became the first Swiss party in terms of vote shares and gained a second seat in the federal council after the 2003 national elections.

As stated in the introduction, the present work is a first attempt to employ neorealist framework and methodology to study institutional change in Switzerland. The present work suffers

from several limitations that could be improved in further work. First, the time span ranges from 1981 to 2016. Although the time frame can't really go back further than 1981, it could be extended to most recent years. This could be done, for instance, by analyzing the *VOTO* studies (the successor of the *VOX* studies since 2017) which collected post-voting survey data from 2017 to 2020. This analysis of the *VOTO* studies could be complemented, as done in this work, by a latent class analysis using more recent data, for instance the *SELECTS* 2019 panel study, which offers even better questions than the *SELECTS* post-election data for 1999 used in this work. Overall, more analyses of more recent data would be a good complement to the present study to assess the stability of the new social bloc configuration which emerged in the 90s.

Finally, the present work tends to overlook the crucial role of ideology, political strategies and institutional change. On the one hand, the different political strategies aimed at promoting a new Swiss socio-economic model, both on the left and the right, deserve to be more carefully explored. On the other hand, ideology, both at the Swiss and international levels, could explain the transformations of these strategies, but also the transformation of the social basis of the different blocs. Moreover, the process of institutional change that the Swiss socio-economic model underwent since the 90s deserve more careful analysis. All these points could be the subject of further work.

## 4 Appendix

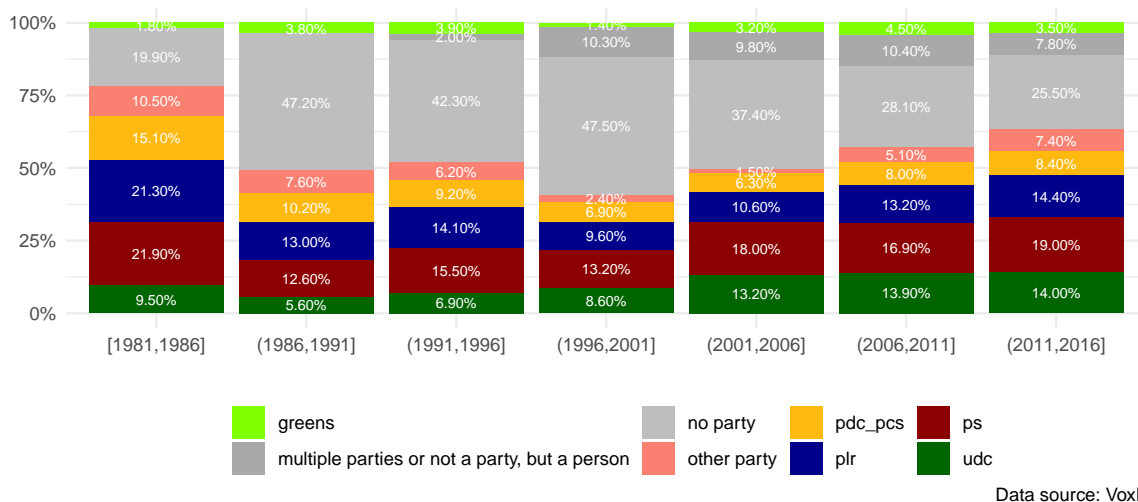


Figure 4.1: Party identification

Table 4.1: Binary logit regressions: party support (log-odds). Full table available [here](#)

	PS	Greens	No party
incomefhigh	-1.054*** (0.181)	-1.407* (0.568)	-0.251* (0.104)
incomefmiddle_high	-0.309** (0.113)	-0.555+ (0.313)	-0.289*** (0.077)
incomefmiddle_low	-0.012 (0.102)	-0.361 (0.278)	-0.082 (0.070)
educationfcomp_school	-0.083 (0.103)	-1.244*** (0.367)	0.202** (0.068)
educationfhigher_voctraining	0.507*** (0.137)	0.249 (0.335)	-0.412*** (0.102)
educationfmaturity	-0.345 (0.228)	1.296** (0.398)	-0.629*** (0.163)
educationfUniversity	-0.156	1.302**	-0.651***



	(0.261)	(0.406)	(0.188)
annee_cat(1986,1991]	-0.919***	0.327	0.287**
	(0.137)	(0.309)	(0.092)
annee_cat(1991,1996]	-0.601***	0.211	0.119
	(0.120)	(0.295)	(0.083)
annee_cat(1996,2001]	-0.940***	-1.191**	0.248**
	(0.124)	(0.372)	(0.082)
annee_cat(2001,2006]	-0.667***	-0.295	-0.118
	(0.118)	(0.305)	(0.082)
annee_cat(2006,2011]	-0.751***	0.148	-0.237*
	(0.143)	(0.319)	(0.101)
annee_cat(2011,2016]	-0.645***	-0.169	-0.355***
	(0.143)	(0.350)	(0.103)
Num.Obs.	68501	68501	75456
AIC	60477.9	18126.4	96941.1
BIC	61208.6	18857.2	97679.6
Log.Lik.	-30158.935	-8983.191	-48390.555
F			64.224
RMSE	0.37	0.17	0.47

+ p < 0.1, \* p < 0.05, \*\* p < 0.01, \*\*\* p < 0.001

Table 4.2: Binary logit regressions: party support (log-odds). Full table available [here](#)

	PRD-PLR	PDC/PCS	UDC
incomefhigh	1.262***	0.267	-0.008
	(0.165)	(0.179)	(0.209)
incomefmiddle_high	0.969***	0.068	-0.033
	(0.142)	(0.143)	(0.165)
incomefmiddle_low	0.382**	0.005	0.023
	(0.139)	(0.133)	(0.153)
educationfcomp_school	0.129	0.034	0.012
	(0.130)	(0.124)	(0.135)
educationfhigher_voctraining	0.301	-0.344	-0.672**
	(0.189)	(0.211)	(0.212)
educationfmaturity	0.442+	-0.420	-1.473**
	(0.241)	(0.312)	(0.461)
educationfUniversity	-0.014	-0.306	-1.505*
	(0.287)	(0.333)	(0.607)
annee_cat(1986,1991]	-0.698***	-0.619***	-0.670**
	(0.187)	(0.171)	(0.228)
annee_cat(1991,1996]	-0.417**	-0.737***	-0.064

	(0.161)	(0.159)	(0.182)
annee_cat(1996,2001]	-0.668***	-0.970***	0.171
	(0.165)	(0.160)	(0.172)
annee_cat(2001,2006]	-0.575***	-1.039***	0.965***
	(0.164)	(0.164)	(0.161)
annee_cat(2006,2011]	-0.316+	-0.597**	0.947***
	(0.189)	(0.188)	(0.185)
annee_cat(2011,2016]	-0.281	-1.132***	1.267***
	(0.185)	(0.200)	(0.183)
Num.Obs.	68501	68501	68501
AIC	46836.1	34929.2	41848.2
BIC	47566.8	35660.0	42579.0
Log.Lik.	-23338.037	-17384.620	-20844.110
RMSE	0.31	0.27	0.30

+ p < 0.1, \* p < 0.05, \*\* p < 0.01, \*\*\* p < 0.001

Table 4.3: Binary logit regressions: political leaning (log-odds). Full table available [here](#)

	Left	Right	No leaning
income[3k,5k]	-0.238+	0.256+	0.006
	(0.129)	(0.136)	(0.117)
income[5k,7k]	-0.003	0.151	-0.094
	(0.133)	(0.143)	(0.123)
income[7k,9k]	-0.014	0.368*	-0.259+
	(0.150)	(0.159)	(0.143)
incomemore_9k	-0.068	0.540***	-0.380*
	(0.157)	(0.162)	(0.151)
educationfcomp_school	-0.258+	0.238	-0.003
	(0.150)	(0.145)	(0.125)
educationfhigher_voctraining	0.370*	0.081	-0.368*
	(0.160)	(0.169)	(0.148)
educationfmaturity	0.975***	0.090	-1.049***
	(0.185)	(0.211)	(0.197)
educationfUniversity	0.908***	0.070	-1.019***
	(0.142)	(0.157)	(0.151)
annee_cat[1996,2000)	-0.245+	0.079	0.127
	(0.133)	(0.141)	(0.120)
annee_cat[2000,2004)	-0.493***	0.102	0.298*
	(0.135)	(0.142)	(0.120)
annee_cat[2004,2008)	-0.146	0.204	-0.044
	(0.134)	(0.144)	(0.123)

annee_cat[2008,2012)	-0.468**	0.275+	0.158
	(0.155)	(0.161)	(0.139)
annee_cat[2012,2016]	-0.335*	0.490**	-0.099
	(0.147)	(0.151)	(0.133)
educationfmaturity × annee_cat[2012,2016]	-0.462**	-0.033	0.584***
	(0.165)	(0.183)	(0.177)
educationfUniversity × annee_cat[2012,2016]	0.033	-0.378**	0.352*
	(0.127)	(0.135)	(0.138)
Num.Obs.	45278	45278	45278
AIC	52978.1	52450.1	58592.7
BIC	53693.2	53165.1	59307.8
Log.Lik.	-26407.061	-26143.026	-29214.367
RMSE	0.45	0.44	0.48

+ p < 0.1, \* p < 0.05, \*\* p < 0.01, \*\*\* p < 0.001

Table 4.4: Binary logit regressions: issue position (log-odds). Full table available [here](#)

	Redistribution	Equal R&C CH-foreign	State intervention
income[3k,5k]	0.002	-0.022	-0.112
	(0.103)	(0.105)	(0.116)
income[5k,7k]	-0.100	0.099	-0.329**
	(0.109)	(0.111)	(0.125)
income[7k,9k]	-0.362**	0.158	-0.220
	(0.126)	(0.128)	(0.145)
incomemore_9k	-0.650***	0.217	-0.400*
	(0.134)	(0.136)	(0.157)
educationfcomp_school	0.162	-0.307**	0.246*
	(0.110)	(0.111)	(0.121)
educationfhhigher_voctraining	-0.180	0.330*	-0.128
	(0.137)	(0.136)	(0.160)
educationfmaturity	-0.011	0.952***	-0.016
	(0.169)	(0.173)	(0.188)
educationfUniversity	0.100	1.276***	0.347*
	(0.129)	(0.137)	(0.139)
annee_cat[1996,2000)	-0.023	-0.154	0.015
	(0.106)	(0.108)	(0.120)
annee_cat[2000,2004)	-0.105	-0.003	0.397***
	(0.104)	(0.106)	(0.116)
annee_cat[2004,2008)	0.051	0.167	0.508***
	(0.108)	(0.110)	(0.119)
annee_cat[2008,2012)	0.033	0.079	0.696***

	(0.124)	(0.125)	(0.132)
annee_cat[2012,2016]	0.123	-0.076	0.599***
	(0.118)	(0.119)	(0.127)
educationfmaturity × annee_cat[2012,2016]	-0.528***	-0.607***	0.102
	(0.152)	(0.155)	(0.171)
educationfUniversity × annee_cat[2012,2016]	-0.210+	-0.276*	0.221+
	(0.117)	(0.124)	(0.129)
Num.Obs.	52418	52434	52537
AIC	71130.4	69248.4	64698.3
BIC	71857.5	69975.5	65425.6
Log.Lik.	-35483.212	-34542.213	-32267.140
RMSE	0.49	0.48	0.46

+ p < 0.1, \* p < 0.05, \*\* p < 0.01, \*\*\* p < 0.001

Table 4.5: Model selection: 12 clusters model

Cluster	L <sup>2</sup>	L2 bootstrap p	-2LL Diff	-2LL Diff bootstrap p	Entropy R <sup>2</sup>
1-Cluster	14058.41	0.000	NA	NA	1.0000
2-Cluster	12111.01	0.000	1947.3954	0.000	0.6441
3-Cluster	11173.20	0.006	937.8165	0.000	0.6299
4-Cluster	10932.57	0.060	240.6254	0.000	0.6043
5-Cluster	10708.48	0.192	224.0898	0.000	0.5925
6-Cluster	10584.08	0.234	124.4011	0.000	0.5788
7-Cluster	10467.74	0.324	116.3432	0.000	0.5933
8-Cluster	10389.37	0.356	78.3647	0.000	0.6009
9-Cluster	10318.10	0.332	71.2689	0.000	0.6084
10-Cluster	10259.10	0.290	59.0079	0.004	0.6058
11-Cluster	10208.58	0.264	50.5185	0.014	0.6035
12-Cluster	10160.79	0.264	47.7854	0.034	0.6107
13-Cluster	10114.68	0.268	46.1100	0.066	0.6293

Table 4.6: Binary logistic regression: support for EU integration. Log(odds). Data source: SELECTS 1999

	For EU integration
income	0.013*** (0.003)
education	0.007* (0.003)
as_character(sex)male	-0.032+

	(0.018)
as_character(language)German	-0.139***
	(0.021)
as_character(language)Italian	-0.240***
	(0.027)
symp_udc	-0.052***
	(0.003)
symp_ps	0.039***
	(0.003)
symp_prd	0.016***
	(0.004)
Num.Obs.	2365
R2	0.301
AIC	2530.4
BIC	2588.1
Log.Lik.	-1255.195
RMSE	0.41

---

+ p < 0.1, \* p < 0.05, \*\* p < 0.01, \*\*\* p < 0.001

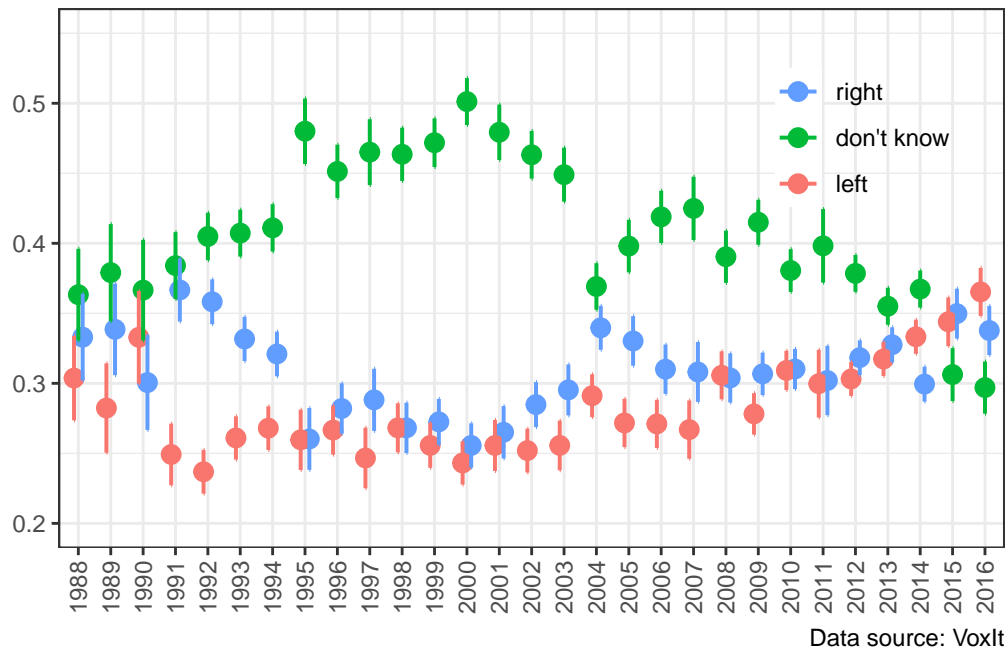


Figure 4.2: Proportions of Swiss citizen leaning for the left, the right or neither left or right: 1988-2016

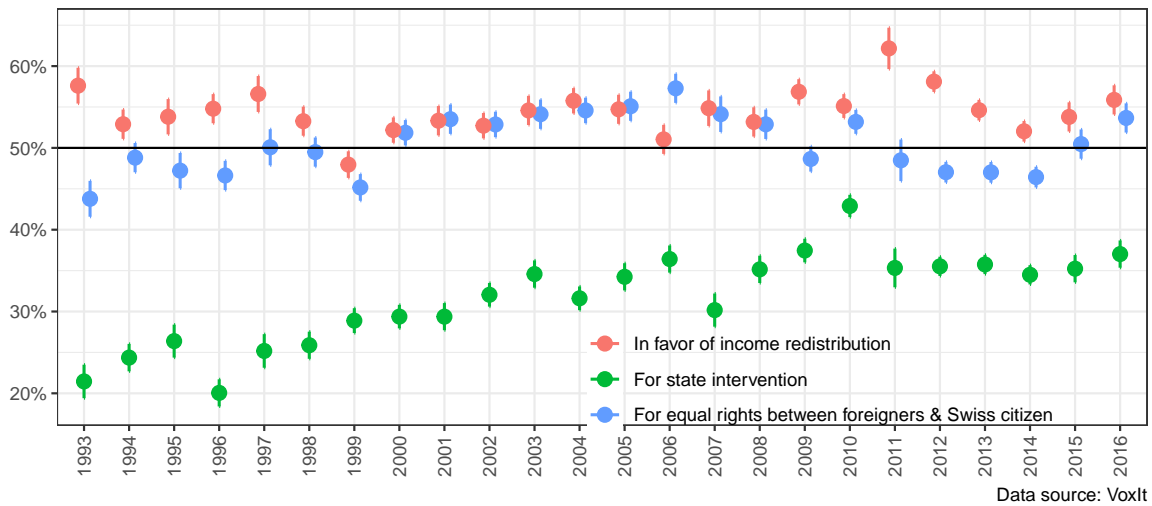
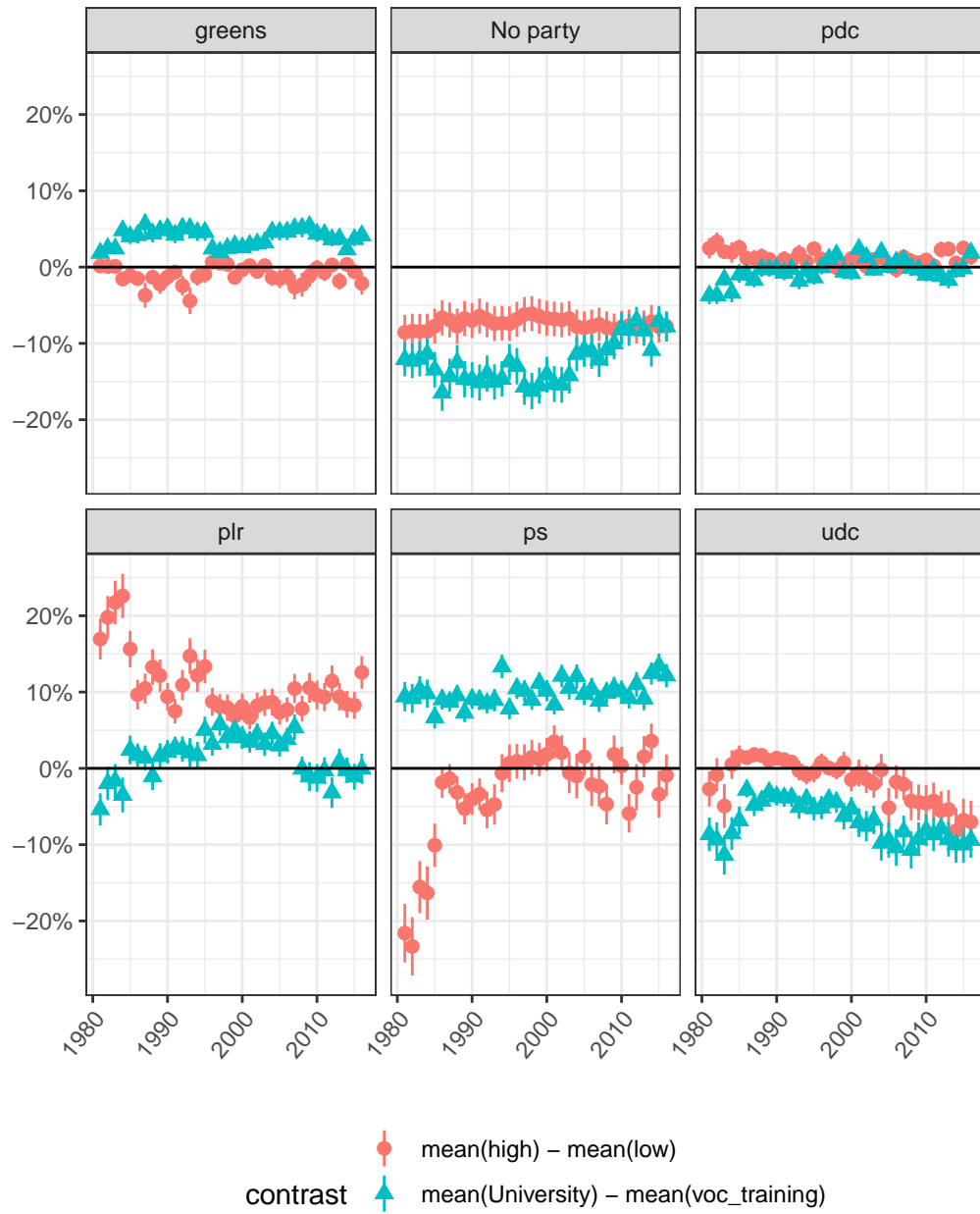
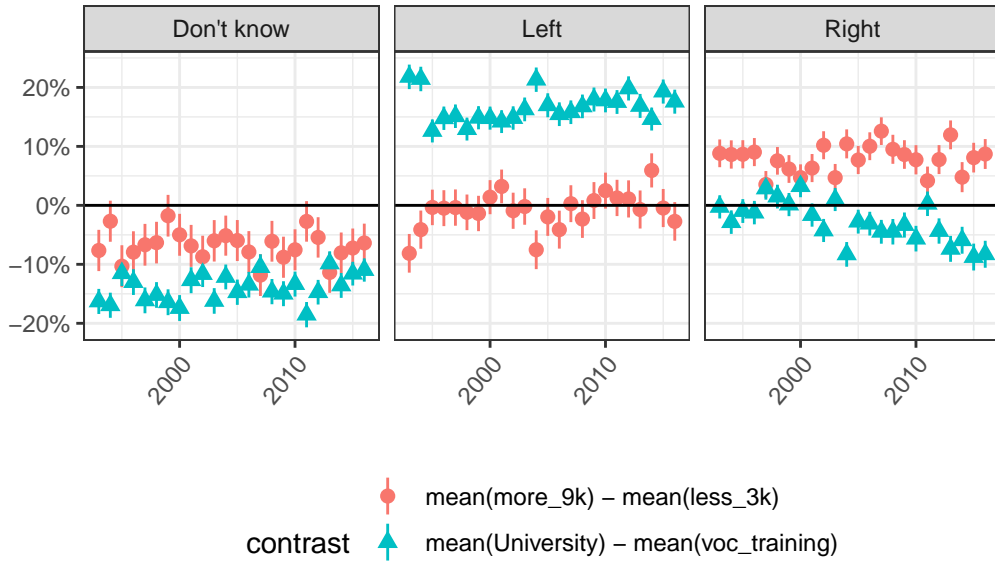


Figure 4.3: Proportions of Swiss citizen supporting state intervention, equal rights & chances for foreigners, and redistribution: 1993-2016



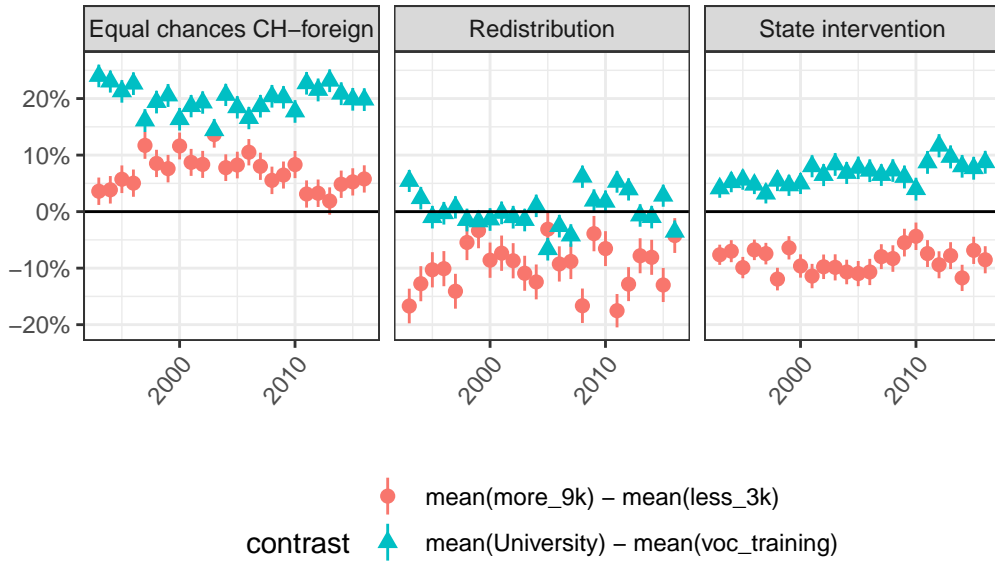
Data source: VoxIt

Figure 4.4: Average marginal contrasts results from multilevel probit model: party support



Data source: VoxIt

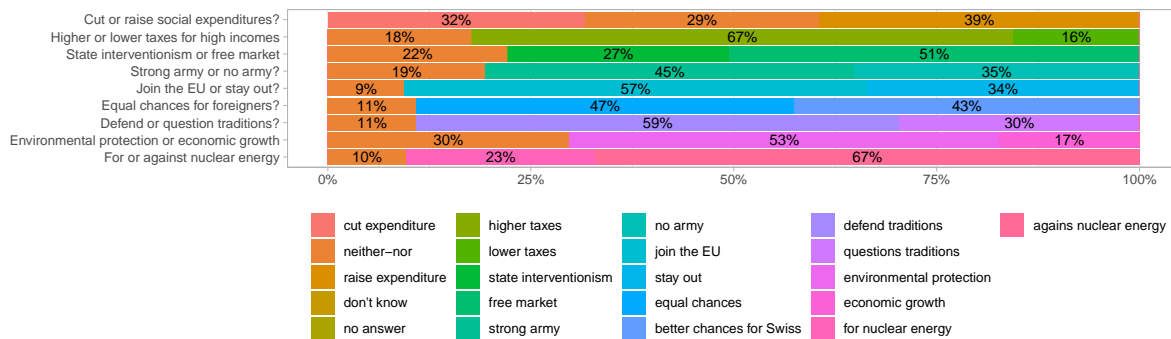
Figure 4.5: Average marginal contrasts results from multilevel probit regressions: political leaning



Data source: VoxIt

Figure 4.6: Average marginal contrasts results from multilevel probit regressions: issue position





Data source: SELECTS 1999

Figure 4.7: Variables chosen as indicators in the Latent class model for 1999: descriptive statistics

# Auto-analyse des dimensions éthiques du mémoire de Master

(Ce document restitue les réflexions menées par la mémorante en dialogue avec sa directrice de mémoire)<sup>1</sup>

**Nom et prénom de l'étudiante:** Güney Celâl

**Nom et prénom de la directrice du mémoire:** Amable bruno

**Titre du mémoire de master:** Économie politique du changement institutionnel et blocs sociaux en Suisse: une approche néoréaliste

**Résumé** (maximum 250 mots)

What were the political conditions and social bases for a neoliberal transformation of the Swiss socio-economic model in the last decades? The present master thesis seeks to explore the social bases behind the transformation and stability of the Swiss socio-economic model since the 80s. As a first step, long-run analyses of the socio-economic determinants of party support, political leaning and policy preferences are conducted. The results show evidence that, regarding party support, Switzerland's political landscape appears to be structured by a brahmin left versus merchant right divide, as theorized by Piketty (2019). However, the results for political leaning show that, while right leaning evolved into a merchant pattern, left leaning became gradually endorsed by upper-middle income and high education groups. Finally, the results from a latent class analysis aimed at identifying the recomposition of the Swiss social blocs in the late 90s are presented. The selected model divides the late 90s' Swiss population into twelve socio-political groups, and the different strategies that could have aggregated these clusters into social blocs are assessed. Using the concepts and methods of neorealism (Amable and Palombarini 2005, 2008), the objective of this master thesis is to provide the first steps into a broader analysis of the political economy of institutional change in Switzerland.

**Partie A** (à remplir avant la réalisation de la partie empirique du mémoire)

## A.1. Les participantes à la recherche

Sous quelle forme votre projet implique-t-il des participantes (questionnaires, entretiens, observations, expérimentation, etc.) ? Quel est leur profil ? Comment sont-elles recrutées et

---

<sup>1</sup>Par souci de lisibilité, le féminin en usage dans ce document inclut tous les genres.

informées des objectifs et des modalités de la recherche ? Comment leur consentement est-il recueilli ? (maximum 500 mots)

Mon projet n'implique pas des participants.

### **A.2. Les données récoltées**

Quels types de données sont récoltés et comment ces dernières sont-elles traitées ? Avec quels moyens technologiques les données sont-elles récoltées, stockées et traitées ? Vos données seront-elles anonymisées et si oui comment ? Si non, expliquez pourquoi. Vos données entrent-elles dans la catégorie « données personnelles » ou « données sensibles » au sens de la loi LIPAD genevoise ? (maximum 500 mots)

Les données analysés dans le cadre de cette recherche sont des données d'enquêtes post-électorales ou de post-votations, de 1981 à 2016. Les enquêtes post-électorales correspondent aux études SELECTS (Swiss Election Studies), et les études post-votations aux études Vox, qui sont les produits des recherches conduites par le Centre de Compétence Suisse en Sciences Sociales (Fors). Les enquêtes sont choisies selon la méthodologie d'échantillonnage aléatoire propre à SELECTS et à Vox. Les données récoltées sont stockées dans la base de données Swisssubbase. Elles ont été téléchargées, stockées dans un ordinateur personnel et analysées avec le logiciel statistique R. Les données sont déjà anonymisées par les producteurs de ces données en ne fournissant pas d'information personnelle sur les répondants présents dans les jeux de données. Les données entrent dans la catégorie de données personnelles sensibles.

### **Enjeux éthiques et risques identifiés**

Quels sont les éventuels enjeux éthiques ou risques liés à votre projet de recherche, pour les participantes et pour la mémorante ? Quels sont les moyens envisagés pour les prévenir ou en limiter la portée ? (maximum 500 mots)

Ma recherche ne pose pas de problèmes éthiques majeurs, que ce soit pour les enquêtés ou bien pour moi.

**Partie B** (à remplir après la réalisation de la partie empirique)

### **B.1. Les participantes à la recherche**

Votre projet a-t-il été modifié quant aux participantes à la recherche ? Si oui, quelles modifications comportent à une dimension éthique ? (maximum 250 mots)

Non.

### **B.2. Les données récoltées**

La récolte, le stockage et le traitement des données ont-ils été modifiés par rapport à votre intention initiale ? Si oui, quelles modifications comportent une dimension éthique ? (maximum 250 mots)

Non.

Vos données sont-elles conservées après la validation du mémoire ? Si oui, où sont-elles stockées, et pour quelle durée ? (maximum 250 mots)

Les données sont conservées sur mon ordinateur jusqu'à l'expiration des contrats avec Swis-subase.

**Partie C (libre)**

Date(s): 5 mars 2024

Partagez ici vos réflexions sur les dimensions éthiques de votre projet qui n'ont pas trouvé de place dans les catégories A et B (maximum 500 mots).

...

## References

- Albert, Michael. 2009. *Capitalism Against Capitalism*. 1st edition. London: Wiley.
- Altermatt, Urs. 1979. "Conservatism in Switzerland: A Study in Antimodernism." *Journal of Contemporary History* 14 (4): 581–610. <https://doi.org/10.1177/002200947901400402>.
- Amable, Bruno. 2003. *The Diversity of Modern Capitalism*. Oxford ; New York: Oxford University Press.
- . 2016. "Institutional Complementarities in the Dynamic Comparative Analysis of Capitalism." *Journal of Institutional Economics* 12 (1): 79–103. <https://doi.org/10.1017/S1744137415000211>.
- . 2017. *Structural Crisis and Institutional Change in Modern Capitalism: French Capitalism in Transition*. Oxford University Press. <https://doi.org/10.1093/acprof:oso/9780198787815.001.0001>.
- . 2021. "In Search of the Bloc Bourgeois." *Revue de La Régulation. Capitalisme, Institutions, Pouvoirs*, no. 31 (August). <https://doi.org/10.4000/regulation.20350>.
- . 2023. "Diversité Et Domination Des Capitalismes Nationaux." In *Théorie de La Régulation, Un Nouvel État Des Savoirs*, 545. Dunod. <https://archive-ouverte.unige.ch/unige:172056>.
- Amable, Bruno, and Thibault Darcillon. 2022a. "Brahmin Left Versus Merchant Right. How Useful Is This Distinction for the Analysis of Political Divides in Western Democracies?" *Political Economy Working Papers*.
- . 2022b. "The Brahmin Left, the Merchant Right and the Bloc Bourgeois." *Review of International Political Economy* 29 (4): 1342–67. <https://doi.org/10.1080/09692290.2021.1913440>.
- Amable, Bruno, Elvire Guillaud, and Stefano Palombarini. 2012. *L'économie politique du néolibéralisme: Le cas de la France et de l'Italie*. Collection du CEPREMAP 26. Paris: Éditions Rue d'Ulm.
- Amable, Bruno, and Stefano Palombarini. 2005. *L'économie Politique n'est Pas Une Science Morale*. Raisons d'Agir. Paris.
- . 2008. "A Neorealist Approach to Institutional Change and the Diversity of Capitalism." *Socio-Economic Review* 7 (1): 123–43. <https://doi.org/10.1093/ser/mwn018>.
- . 2014a. "The Bloc Bourgeois in France and Italy." In *Economic Crises and Policy Regimes. The Dynamics of Policy Innovation and Paradigmatic Change*. Edward Elgar.
- . 2014b. "The Bloc Bourgeois in France and Italy." In *Economic Crises and Policy Regimes. The Dynamics of Policy Innovation and Paradigmatic Change*, edited by Hideko Magara. Edward Elgar Publishing. <https://doi.org/10.4337/9781782549925.00015>.

- . 2018. *L'illusion Du Bloc Bourgeois: Alliances Sociales Et Avenir Du Modèle Français*. Raisons d'Agir. Paris.
- . 2022. *Où Va Le Bloc Bourgeois ?* Paris: La Dispute.
- . 2023. "Multidimensional Social Conflict and Institutional Change." *New Political Economy*, May, 1–16. <https://doi.org/10.1080/13563467.2023.2215701>.
- Arel-Bundock, Vincent. 2024. *Marginal Effects: Predictions, Comparisons, Slopes, Marginal Means, and Hypothesis Tests*. <https://marginaleffects.com/>.
- Atkinson, Anthony B. 2015. *Inequality: What Can Be Done?* Harvard University Press.
- Boillat, Johann. 2011. "Contrôler La Dissidence : Naissance Et Évolution Du Cartel Horloger Suisse (1931-1941)." In *Schweizerische Gesellschaft Für Wirtschafts- Und Sozialgeschichte*, 26:261–74. <https://doi.org/10.5169/seals-515017>.
- Bonvin, Jean-Michel, Pierre Gobet, Stéphane Rossini, and Jean-Pierre Tabin. 2015. *Manuel de Politique Sociale*. 2nd ed. ESSP.
- Bornschiefer, Simon. 2010. *Cleavage Politics and the Populist Right: The New Cultural Conflict in Western Europe*. Temple University Press. <http://gen.lib.rus.ec/book/index.php?md5=ee123095cfe9fb8d6bcd03d6579a0705>.
- Boschetti, Pietro. 2007. *La Conquête Du Pouvoir: Essai Sur La Montée de l'UDC*. Carouge-Genève: Éditions Zoé.
- Brunner, Matthias, Hanspeter Kriesi, and François Lorétan. 2017. "Enquêtes Standardisées VoxIt." FORS - Swiss Centre of Expertise in the Social Sciences. <https://doi.org/10.23662/FORS-DS-688-2>.
- Brunner, Matthias, and Lea Sgier. 1997. "Crise de Confiance Dans Les Institutions Politiques Suisses? Quelques Résultats d'une Enquête d'opinion." *Swiss Political Science Review* 3 (1): 1–9. <https://doi.org/10.1002/j.1662-6370.1997.tb00198.x>.
- Bühlmann, Felix, Thomas David, and André Mach. 2012. "Political and Economic Elites in Switzerland." *European Societies* 14 (5): 727–54. <https://doi.org/10.1080/14616696.2012.709531>.
- Bürgi, Markus. 2020. "Escher, Alfred. Dictionnaire Historique de la Suisse." 2020. <https://hls-dhs-dss.ch/articles/003626/2020-01-20/>.
- Carera, Mario. 1993. "Les Leçons Des Patrons Agacent Le Parti Radical." *Le Nouveau Quotidien*, August. [https://www.letempsarchives.ch/page/LNQ\\_1993\\_08\\_30/8/article/9763525/%22david%20de%20pury%22](https://www.letempsarchives.ch/page/LNQ_1993_08_30/8/article/9763525/%22david%20de%20pury%22).
- Charles, Léo, and Guillaume Vallet. 2024. "Fast and Curious: 'The Swiss Development Puzzle.' The Institutional Roots of the Success of Industrialization." *Review of Political Economy* 0 (0): 1–27. <https://doi.org/10.1080/09538259.2023.2298747>.
- Clark, Terry Nichols, and Seymour Martin Lipset. 1991. "ARE SOCIAL CLASSES DYING?" *International Sociology* 6 (4): 397–410. <https://doi.org/10.1177/026858091006004002>.
- "Country Rankings | OEC. OEC - the Observatory of Economic Complexity." n.d. Accessed October 11, 2023. <https://oec.world/en/rankings/eci/hs6/hs96>.
- Crevoisier, Jean-Marc. 1996. "Le Malaise Entre Mondes Politique Et Économique En Toile de Fond Du Congrès Radical." *Journal de Genève Et Gazette de Lausanne*, January. [https://www.letempsarchives.ch/page/JDG\\_1996\\_01\\_22/6/article/9291348/%22david%20de%20pury%22](https://www.letempsarchives.ch/page/JDG_1996_01_22/6/article/9291348/%22david%20de%20pury%22).

- “David de Pury Ne Veut Pas Diriger Une Suisse Qu’il Sent Incapable de Changer.” 1998. *Journal de Genève Et Gazette de Lausanne*, January. [https://www.letempsarchives.ch/page/JDG\\_1998\\_01\\_20/1](https://www.letempsarchives.ch/page/JDG_1998_01_20/1).
- David, Thomas, and André Mach. 2006. “Institutions and Economic Growth: The Successful Experience of Switzerland (1870 - 1950).” Working Paper 2006/101. WIDER Research Paper. <https://www.econstor.eu/handle/10419/63462>.
- David, Thomas, André Mach, and Gerhard Schnyder. 2015. *De La "Forteresse Des Alpes" à La Valeur Actionnariale. Histoire de La Gouvernance d'entreprise Suisse (1880-2010)*. Zürich et Genève: Seismo.
- Degen, Bernard. 2022. “Parti socialiste (PS). Dictionnaire Historique de la Suisse.” January 24, 2022. <https://hls-dhs-dss.ch/articles/017393/2022-01-24/>.
- Durrer de la Sota, Carmen, Amory Gethin, and Clara Martinez-Toledano. 2021. “Party System Transformation and the Structure of Political Cleavages in Austria, Belgium, the Netherlands and Switzerland, 1967-2019.” *World Inequality Lab – Working Paper*, no. 2021. [https://wid.world/wp-content/uploads/2021/03/WorldInequalityLab\\_WP2021\\_08\\_PoliticalCleavages\\_AustriaBelgiumNLSwitzerland.pdf](https://wid.world/wp-content/uploads/2021/03/WorldInequalityLab_WP2021_08_PoliticalCleavages_AustriaBelgiumNLSwitzerland.pdf).
- Garessus, Emmanuel. 2019. “Gerhard Schwarz: «Une Suisse néolibérale? C’est une «fake news» - Le Temps,” November. <https://www.letemps.ch/economie/gerhard-schwarz-une-suisse-neoliberal-cest-une-fake-news>.
- Gethin, Amory, Clara Martínez-Toledano, and Thomas Piketty. 2022. “Brahmin Left Versus Merchant Right: Changing Political Cleavages in 21 Western Democracies, 1948–2020\*.” *The Quarterly Journal of Economics* 137 (1): 1–48. <https://doi.org/10.1093/qje/qjab036>.
- Gethin, Amory, Clara Martínez-Toledano, and Thomas Piketty. 2021. *Political Cleavages and Social Inequalities a Study of Fifty Democracies, 1948–2020*. Harvard University Press.
- Grünenfelder, Patrick Dümmler, Peter. 2022. “7 bonnes raisons de privatiser l’énergie. Avenir Suisse.” October 18, 2022. <https://www.avenir-suisse.ch/fr/7-bonnes-raisons-de-privatiser-lenergie/>.
- Hall, Peter A., and David Soskice. 2001. *Varieties of Capitalism: The Institutional Foundations of Comparative Advantage*. Oxford University Press.
- Hardmeier, Sibylle, Ulrich Klöti, Hanspeter Kriesi, Wolf Linder, Pascal Sciarini, and Adrian Vatter. 2022. “Befragung der Wählerinnen und Wähler nach den Wahlen - 1999.” FORS. <https://doi.org/10.48573/9EX9-FP54>.
- Hauser, Heinz, Beat Schmid, Josef Ackermann, and David De Pury. 1996. *Ayons Le Courage d'un Nouveau Départ : Un Programme Pour La Relance de La Politique Économique de La Suisse*. Zurich: Orell Füssli.
- Holzen, Madelein von. 1991. “L’Europe? Un Coup de Fouet Nécessaire.” *Le Journal de Genève*, June. [https://www.letempsarchives.ch/page/JDG\\_1991\\_06\\_20/12/article/8621126/%22david%20de%20pury%22](https://www.letempsarchives.ch/page/JDG_1991_06_20/12/article/8621126/%22david%20de%20pury%22).
- Hooghe, Liesbet, and Gary Marks. 2018. “Cleavage Theory Meets Europe’s Crises: Lipset, Rokkan, and the Transnational Cleavage.” *Journal of European Public Policy* 25 (1): 109–35. <https://doi.org/10.1080/13501763.2017.1310279>.
- Inglehart, Ronald. 1971. “The Silent Revolution in Europe: Intergenerational Change in Post-Industrial Societies.” *American Political Science Review* 65 (4): 991–1017. <https://doi.org/10.2307/2151268>.

- [//doi.org/10.2307/1953494](https://doi.org/10.2307/1953494).
- . 1990. *Culture Shift in Advanced Industrial Society*. Princeton University Press. <https://doi.org/10.2307/j.ctv346rbz>.
- . 2009. “Changing Values Among Western Publics from 1970 to 2006.” In *European Politics*. Routledge.
- Inglehart, Ronald, and Scott C. Flanagan. 1987. “Value Change in Industrial Societies.” *American Political Science Review* 81 (4): 1289–319. <https://doi.org/10.2307/1962590>.
- Juillard, Dominique. 2012. “« La Suisse n’a pas d’armée, elle est une armée ! ».” *Inflexions* 20 (2): 183–95. <https://doi.org/10.3917/infle.020.0183>.
- Jutzet, Nicolas. 2023. *La Suisse n’existe Plus*. Genève: Editions Slatkine.
- Katzenstein, Peter J. 1985. *Small States in World Markets: Industrial Policy in Europe*. Ithaca; London: Cornell University Press.
- Kergomard, Zoé. 2022. “Ni « rouge » ni « pauvre type » ? Le parti socialiste suisse à la recherche de son électorat (1947-1983).” *Histoire Politique. Revue du Centre d’histoire de Sciences Po*, no. 47 (June). <https://doi.org/10.4000/histoirepolitique.7344>.
- Kitschelt, Herbert. 1994. *The Transformation of European Social Democracy*. Cambridge Studies in Comparative Politics. Cambridge University Press. <http://gen.lib.rus.ec/book/index.php?md5=672bb6ec977ceddc83c745ffc8db0022>.
- Kriesi, Hanspeter, Edgar Grande, Romain Lachat, Martin Dolezal, Simon Bornschie, and Timotheos Frey. 2006. “Globalization and the Transformation of the National Political Space: Six European Countries Compared.” *European Journal of Political Research* 45 (6): 921–56. <https://doi.org/10.1111/j.1475-6765.2006.00644.x>.
- Kriesi, Hanspeter, E. Grande, R. Lachat, M. Dolezal, Simon Bornschie, and T. Frey. 2008. *West European Politics in the Age of Globalization*. Cambridge, UK: Cambridge University Press. <https://doi.org/10.1017/CBO9780511790720>.
- Krill, Marie-Jeanne, and Pascal Brandt. 1992. “David de Pury: ”La Suisse Doit Éviter de Devenir Un Cartel Au Milieu de l’Europe.”” *Journal de Genève Et Gazette de Lausanne*, August. [https://www.letempsarchives.ch/page/JDG\\_1992\\_08\\_07/17/article/8788240/%22La%20Suisse%20doit%20%C3%A9viter%20de%20devenir%20un%20cartel%20au%20milieu%20de%20l’Europe%22](https://www.letempsarchives.ch/page/JDG_1992_08_07/17/article/8788240/%22La%20Suisse%20doit%20%C3%A9viter%20de%20devenir%20un%20cartel%20au%20milieu%20de%20l’Europe%22).
- Leutwiler, Fritz, David De Pury, Gerhard Schwarz, and Josef Ackermann. 1991. *La Politique Économique de La Suisse Face à La Concurrence Internationale. Programme Pour Un Ordre Plus Libéral*. Zürich: Orell Füssli.
- Lijphart, Arend. 1979. “Religious Vs. Linguistic Vs. Class Voting: The ”Crucial Experiment” of Comparing Belgium, Canada, South Africa, and Switzerland.” *The American Political Science Review* 73 (2): 442–58. <https://doi.org/10.2307/1954890>.
- . 2012. *Patterns of Democracy: Government Forms and Performance in Thirty-Six Countries*. Second edition. New Haven: Yale University Press.
- Lipset, Seymour Martin, and Stein Rokkan, eds. 1967. *Party Systems and Voter Alignments: Cross-National Perspectives*. New-York: The Free Press.
- Mach, André. 2007. “La Redéfinition Du Block Bourgeois Au Cours Des Vingt Dernières Années.” In *Zur Politischen Ökonomie Der Schweiz: Eine Annäherung ; Analysen Und Impulse Zur Politik ; Jahrbuch Denknetz 2007: Une Approche ; Analyses Et Impulsions*



- Politiques ; Cahier Réseau de Réflexion 2007 = La Politique Économique de La Suisse*, 1. Aufl. Jahrbuch / Denknnetz 3.2997. Zürich.
- Mach, André, and Pierre Eichenberger. 2011. “Organized Capital and Coordinated Market Economy: Swiss Business Interest Associations Between Socio-Economic Regulation and Political Influence.” In *Switzerland in Europe*. Routledge.
- Mach, André, Silja Häusermann, and Yannis Papadopoulos. 2003. “Economic Regulatory Reforms in Switzerland: Adjustment Without European Integration, or How Rigidities Become Flexible.” *Journal of European Public Policy* 10 (2): 301–18. <https://doi.org/10.1080/1350176032000059053>.
- Mach, André, Gerhard Schnyder, Thomas David, and Martin Lupold. 2007. “Transformations of Self-Regulation and New Public Regulations in the Field of Swiss Corporate Governance (1985-2002).” *World Political Science* 3 (2). <https://doi.org/10.2202/1935-6226.1022>.
- Mattei, Aurélio. 1995. “La ”Revitalisation” Des Économies Européenne Et Suisse.” *Revue Économique Et Sociale : Bulletin de La Société d’Etudes Economiques Et Sociales* 53 (2): 159–67. <https://doi.org/https://doi.org/10.5169/seals-140416>.
- May, Christian, Andreas Nölke, and Michael Schedelik. 2024. “Growth Models and Social Blocs: Taking Gramsci Seriously.” *Competition & Change*, February, 10245294241231992. <https://doi.org/10.1177/10245294241231992>.
- Mazzoleni, Oscar, and Olivier Meuwly. 2013. *Voisinages Et Conflits. Les Partis Politiques Suisses En Mouvement*. Genève: Slatkine.
- Mettral Dubois, Véronique. 2015. *L’oeuvre Politique de James Fazy (1794-1878) Et Son Apport à l’avènement Des Droits Fondamentaux à Genève : Sources Doctrinales Et Contexte Historique*. Collection Genevoise. Droit Et Histoire. Schulthess. <https://archive-ouverte.unige.ch/unige:83364>.
- Meuwly, Olivier. 1992. *Aux sources du radicalisme: les origines de la démocratie libérale*. Éditions du sabre.
- . 2008. *La Liberté Cacophonique: Essai Sur La Crise Des Droites Suisses*. Genève: Éditions Slatkine.
- . 2010. *Les partis politiques: acteurs de l’histoire suisse*. Le savoir suisse. Lausanne: Presses polytechniques et universitaires romandes.
- Milanović, Branko. 2016. *Global Inequality: A New Approach for the Age of Globalization*. First Harvard University Press paperback edition. Cambridge, Massachusetts London, England: The Belknap Press of Harvard University Press.
- Müller, Felix. 2010. “Grutli (société). Dictionnaire Historique de la Suisse.” 2010. <https://hls-dhs-dss.ch/articles/017397/2010-12-22/>.
- Nations, United. 2022. “Human Development Report 2021-22.” United Nations. <https://hdr.undp.org/content/human-development-report-2021-22>.
- Nylund, Karen L., Tihomir Asparouhov, and Bengt O. Muthén. 2007. “Deciding on the Number of Classes in Latent Class Analysis and Growth Mixture Modeling: A Monte Carlo Simulation Study.” *Structural Equation Modeling: A Multidisciplinary Journal* 14 (4): 535–69. <https://doi.org/10.1080/10705510701575396>.
- Obinger, Herbert. 1998. “Federalism, Direct Democracy, and Welfare State Development in Switzerland.” *Journal of Public Policy* 18 (3): 241–63. <https://doi.org/10.1080/0264375981000165191>.

- [//doi.org/10.1017/S0143814X98000129](https://doi.org/10.1017/S0143814X98000129).
- OECD. 1992. *OECD Economic Surveys: Switzerland 1992*. Paris: Organisation for Economic Co-operation; Development. [https://www.oecd-ilibrary.org/economics/oecd-economic-surveys-switzerland-1992\\_eco\\_surveys-che-1992-en](https://www.oecd-ilibrary.org/economics/oecd-economic-surveys-switzerland-1992_eco_surveys-che-1992-en).
- . 2019. *OECD Economic Surveys: Switzerland 2019*. Paris: Organisation for Economic Co-operation; Development. [https://www.oecd-ilibrary.org/economics/oecd-economic-surveys-switzerland-2019\\_7e6fd372-en](https://www.oecd-ilibrary.org/economics/oecd-economic-surveys-switzerland-2019_7e6fd372-en).
- . 2022. *OECD Economic Surveys: Switzerland 2022*. Paris: Organisation for Economic Co-operation; Development. [https://www.oecd-ilibrary.org/economics/oecd-economic-surveys-switzerland-2022\\_1fde6924-en](https://www.oecd-ilibrary.org/economics/oecd-economic-surveys-switzerland-2022_1fde6924-en).
- Oesch, Daniel. 2006. *Redrawing the Class Map*. London: Palgrave Macmillan UK. <https://doi.org/10.1057/9780230504592>.
- . 2008a. “Explaining Workers’ Support for Right-Wing Populist Parties in Western Europe: Evidence from Austria, Belgium, France, Norway, and Switzerland.” *International Political Science Review* 29 (3): 349–73. <https://doi.org/10.1177/0192512107088390>.
- . 2008b. “The Changing Shape of Class Voting.” *European Societies* 10 (3): 329–55. <https://doi.org/10.1080/14616690701846946>.
- . 2011. “Swiss Trade Unions and Industrial Relations After 1990 a History of Decline and Renewal.” In *Switzerland in Europe*. Routledge.
- Oesch, Daniel, and Line Rennwald. 2010. “The Class Basis of Switzerland’s Cleavage Between the New Left and the Populist Right.” *Swiss Political Science Review* 16 (3): 343–71. <https://doi.org/10.1002/j.1662-6370.2010.tb00433.x>.
- . 2018. “Electoral Competition in Europe’s New Tripolar Political Space: Class Voting for the Left, Centre-Right and Radical Right.” *European Journal of Political Research* 57 (4): 783–807. <https://doi.org/10.1111/1475-6765.12259>.
- Palombarini, Stefano. 2001. *La Rupture Du Compromis Social Italien : Un Essai de Macroéconomie Politique*. Paris: CNRS Editions.
- Piguet, Etienne. 2013. *L’immigration En Suisse: Soixante Ans d’entrouverture*. Lausanne: Presses Polytechniques Romandes.
- Piketty, Thomas. 2014. *Capital in the Twenty-First Century*. Cambridge Massachusetts: The Belknap Press of Harvard University Press.
- . 2018. “Brahmin Left Vs Merchant Right: Rising Inequality and the Changing Structure of Political Conflict.” *WID.world WORKING PAPER SERIES*, no. 2018.
- . 2019. *Capital Et Idéologie*. Le Seuil.
- Rennwald, Jean-Claude. 1998. *Vive La Politique! Plaidoyer Pour l’action Socialiste, Syndicale Et Associative*. Communication jurassienne et européenne (CJS).
- Rennwald, Line. 2014. “Class (Non)voting in Switzerland 1971-2011: Ruptures and Continuities in a Changing Political Landscape.” *Swiss Political Science Review* 20 (4): 550–72. <https://doi.org/10.1111/spsr.12124>.
- . 2020. *Social Democratic Parties and the Working Class: New Voting Patterns*. 1st ed. Challenges to Democracy in the 21st Century. Springer International Publishing;Palgrave Macmillan. <http://gen.lib.rus.ec/book/index.php?md5=DC2AFED8958B9AE0932FFEFEB45546C>.

- Rennwald, Line, and Geoffrey Evans. 2014. “When Supply Creates Demand: Social Democratic Party Strategies and the Evolution of Class Voting.” *West European Politics* 37 (5): 1108–35. <https://doi.org/10.1080/01402382.2014.920981>.
- Ribeaud, José. 1998. *Quand La Suisse Disparaît*. Vevey: L’Aire.
- Rossier, Thierry, Christoph Houman Ellersgaard, Anton Grau Larsen, and Jacob Aagaard Lunding. 2022. “From Integrated to Fragmented Elites. The Core of Swiss Elite Networks 1910–2015.” *The British Journal of Sociology* 73 (2): 315–35. <https://doi.org/10.1111/1468-4446.12929>.
- Schwok, René. 1993. “Causes Et Conséquences Du Refus de La Suisse d’adhérer à l’espace Économique Européen.” *Relations Internationales*, no. 73: 95–108. <https://www.jstor.org/stable/45344498>.
- Sciarini, Pascal. 2023. *Politique Suisse - Institutions, Acteurs, Processus*. Lausanne: Presses polytechniques et universitaires romandes. <https://www.epflpress.org/produit/1421/9782889155279/politique-suisse>.
- Skenderovic, Damir. 2017. “Union démocratique du centre (UDC). Dictionnaire Historique de la Suisse.” 2017. <https://hls-dhs-dss.ch/articles/017389/2017-03-20/>.
- Summermatter, Stephanie. 2020. “Stämpfli, Jakob. Dictionnaire Historique de la Suisse.” 2020. <https://hls-dhs-dss.ch/articles/004635/2020-04-15/>.
- Tawfik, Amal. 2019. “Les transformations du vote de classe en Suisse entre 1975 et 2011.” *Sociologie* 10 (3): 243–65. <https://doi.org/10.3917/socio.103.0243>.
- Teney, Céline, Onawa Promise Lacewell, and Pieter De Wilde. 2014. “Winners and Losers of Globalization in Europe: Attitudes and Ideologies.” *European Political Science Review* 6 (4): 575–95. <https://doi.org/10.1017/S1755773913000246>.
- Trampusch, Christine, and André Mach. 2011. *Switzerland in Europe: Continuity and Change in the Swiss Political Economy*. Taylor & Francis.
- Tresch, Anke, and Georg Lutz. 2022. “Swiss Election Study (Selects), Cumulative Dataset 1971-2019.” FORS. <https://doi.org/10.48573/PCBM-2280>.
- Vatter, Adrian. 2008. “Swiss Consensus Democracy in Transition: A Re-Analysis of Lijphart’s Concept of Democracy for Switzerland from 1997 to 2007.” *World Political Science* 4 (2). <https://doi.org/10.2202/1935-6226.1042>.
- Vermunt, Jeroen K. 2017. “Latent Class Modeling with Covariates: Two Improved Three-Step Approaches.” *Political Analysis* 18 (4): 450–69. <https://doi.org/10.1093/pan/mpq025>.
- Vermunt, Jeroen K, and Jay Magidson. 2016. “Technical Guide for Latent GOLD 5.1: Basic, Advanced, and Syntax.” *Statistical Innovations Inc.*
- Votation Populaire Du 28 Novembre 1993. Explications Du Conseil Fédéral*. 1993. Chancellerie fédérale. <https://swissvotes.ch/attachments/63342ae40faa4e6957c10e3ae7ac0f68f7627dffaec54a13a5b363b970>
- Walter, André. 2022. “The Social Origins of Christian Democracy: Rural–Urban Migration, Interest Group Preemption, and the Rise of the Catholic Workers’ Movement.” *Socio-Economic Review* 20 (2): 687–710. <https://doi.org/10.1093/ser/mwaa014>.
- Widmer, Eric, and Ivan De Carlo. 2010. “Why Do the Swiss Trust Their Government Less and Other People More Than They Used To?” In *Value Change in Switzerland*, 171. Lexington Books. <https://archive-ouverte.unige.ch/unige:14538>.
- Zeller, Willy, Thomas Häberlin, and Claudia Schoch. 1992. “Christophe Blocher Et David de

Pury Confrontent Leurs Vues Sur l'europe." Translated by Alexandre Fischer. *Le Nouveau Quotidien*, August. [https://www.letempsarchives.ch/page/LNQ\\_1992\\_08\\_27/14/article/9690564/%22david%20de%20pury%22](https://www.letempsarchives.ch/page/LNQ_1992_08_27/14/article/9690564/%22david%20de%20pury%22).

Zollinger, Delia. 2022. "Cleavage Identities in Voters' Own Words: Harnessing Open-Ended Survey Responses." *American Journal of Political Science* n/a: 1–21. <https://doi.org/10.1111/ajps.12743>.